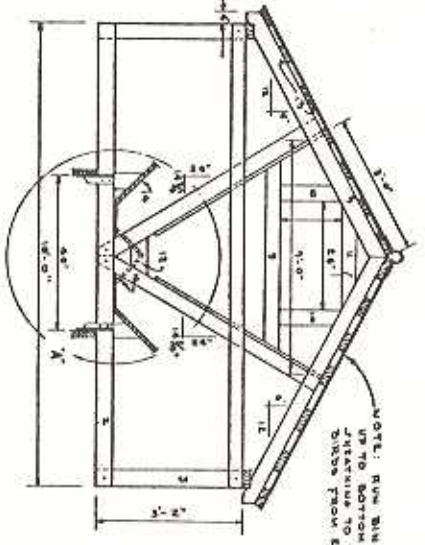


DETAIL OF FRAMING



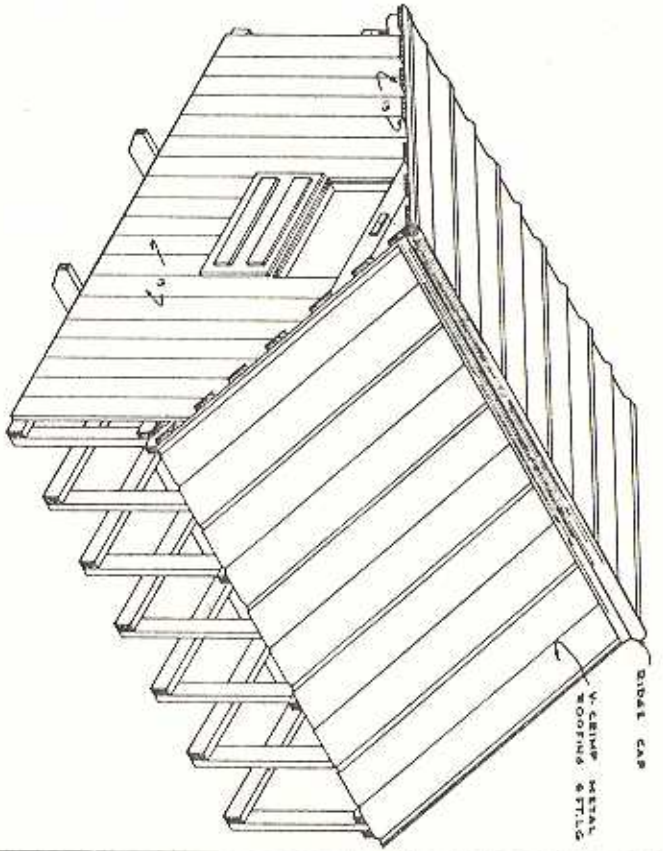
END VIEW SHOWING FRAMING

0 1 2 3 FT.

NOTE: RUN RIB SIDES UP TO BOTTOM OF BRACKETS TO KEEP CHAINS FROM BENDING

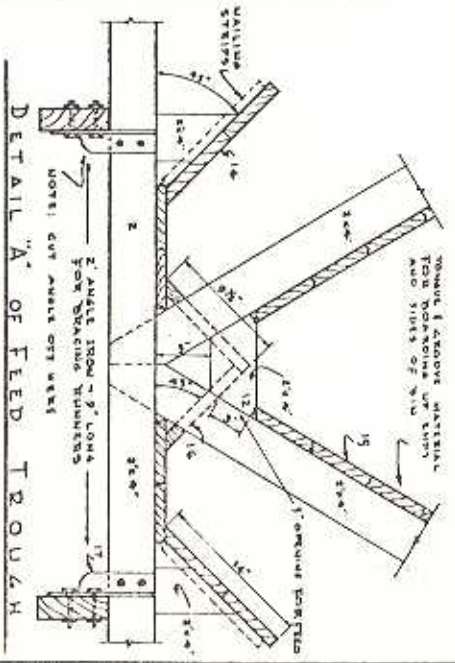
NOTE: ALL FRAMING IS 2x4 EXCEPT 2x6 FOR RUNNERS

WALLS ARE SPACED EXACTLY OVER EVERY OTHER BOTTOM JOIST.



COMPLETE VIEW OF FEEDER

BILL OF MATERIALS		
RAY NO.	NUMBER SIZE OF MATERIAL	STAPLES STOCK TO CUT MATERIAL FROM
1	2 2x4 - 2'-0" x 10'-0"	2 - 2x4 x 10'-0"
2	9 2x4 - 2'-4" x 10'-0"	9 - 2x4 x 10'-0"
3	14 2x4 - 2'-4" x 10'-0"	5 - 2x4 x 10'-0"
4	2 2x4 - 2'-4" x 10'-0"	2 - 2x4 x 10'-0"
5	2 2x4 - 2'-4" x 10'-0"	4 - 2x4 x 10'-0"
6	2 2x4 - 2'-4" x 10'-0"	4 - 2x4 x 10'-0"
7	4 2x4 - 2'-4" x 10'-0"	2 - 2x4 x 10'-0"
8	4 2x4 - 2'-4" x 10'-0"	USE THE REMAINING FROM CUT NO. 7
9	2 2x4 - 2'-4" x 10'-0"	1 - 2x4 x 10'-0"
10	4 2x4 - 2'-4" x 10'-0"	1 - 2x4 x 10'-0"
11	2 2x4 - 2'-4" x 10'-0"	USE THE REMAINING FROM CUT NO. 10
12	6 2x4 - 2'-4" x 10'-0"	USE THE REMAINING FROM CUT NO. 11
13	14 2x4 - 1'-4" x 10'-0"	14 - 1x4 x 10'-0"
14	2 2x4 - 1'-4" x 10'-0"	2 - 1x4 x 10'-0"
15	2 2x4 - 1'-4" x 10'-0"	2 - 1x4 x 10'-0"
16	10 8 D NAILS	
17	16 1/2 GALV. BOLTS	
18	5# 10 D GALV. NAILS	
19	2 1/2" ANGLE IRON - 7' LONG	
20	2 1/2" ANGLE IRON - 7' LONG	
21	2 1/2" ANGLE IRON - 7' LONG	
22	2 1/2" ANGLE IRON - 7' LONG	
23	2 1/2" ANGLE IRON - 7' LONG	
24	2 1/2" ANGLE IRON - 7' LONG	
25	2 1/2" ANGLE IRON - 7' LONG	
26	2 1/2" ANGLE IRON - 7' LONG	
27	2 1/2" ANGLE IRON - 7' LONG	
28	2 1/2" ANGLE IRON - 7' LONG	
29	2 1/2" ANGLE IRON - 7' LONG	
30	2 1/2" ANGLE IRON - 7' LONG	
31	2 1/2" ANGLE IRON - 7' LONG	
32	2 1/2" ANGLE IRON - 7' LONG	
33	2 1/2" ANGLE IRON - 7' LONG	
34	2 1/2" ANGLE IRON - 7' LONG	
35	2 1/2" ANGLE IRON - 7' LONG	
36	2 1/2" ANGLE IRON - 7' LONG	
37	2 1/2" ANGLE IRON - 7' LONG	
38	2 1/2" ANGLE IRON - 7' LONG	
39	2 1/2" ANGLE IRON - 7' LONG	
40	2 1/2" ANGLE IRON - 7' LONG	
41	2 1/2" ANGLE IRON - 7' LONG	
42	2 1/2" ANGLE IRON - 7' LONG	
43	2 1/2" ANGLE IRON - 7' LONG	
44	2 1/2" ANGLE IRON - 7' LONG	
45	2 1/2" ANGLE IRON - 7' LONG	
46	2 1/2" ANGLE IRON - 7' LONG	
47	2 1/2" ANGLE IRON - 7' LONG	
48	2 1/2" ANGLE IRON - 7' LONG	
49	2 1/2" ANGLE IRON - 7' LONG	
50	2 1/2" ANGLE IRON - 7' LONG	
51	2 1/2" ANGLE IRON - 7' LONG	
52	2 1/2" ANGLE IRON - 7' LONG	
53	2 1/2" ANGLE IRON - 7' LONG	
54	2 1/2" ANGLE IRON - 7' LONG	
55	2 1/2" ANGLE IRON - 7' LONG	
56	2 1/2" ANGLE IRON - 7' LONG	
57	2 1/2" ANGLE IRON - 7' LONG	
58	2 1/2" ANGLE IRON - 7' LONG	
59	2 1/2" ANGLE IRON - 7' LONG	
60	2 1/2" ANGLE IRON - 7' LONG	
61	2 1/2" ANGLE IRON - 7' LONG	
62	2 1/2" ANGLE IRON - 7' LONG	
63	2 1/2" ANGLE IRON - 7' LONG	
64	2 1/2" ANGLE IRON - 7' LONG	
65	2 1/2" ANGLE IRON - 7' LONG	
66	2 1/2" ANGLE IRON - 7' LONG	
67	2 1/2" ANGLE IRON - 7' LONG	
68	2 1/2" ANGLE IRON - 7' LONG	
69	2 1/2" ANGLE IRON - 7' LONG	
70	2 1/2" ANGLE IRON - 7' LONG	
71	2 1/2" ANGLE IRON - 7' LONG	
72	2 1/2" ANGLE IRON - 7' LONG	
73	2 1/2" ANGLE IRON - 7' LONG	
74	2 1/2" ANGLE IRON - 7' LONG	
75	2 1/2" ANGLE IRON - 7' LONG	
76	2 1/2" ANGLE IRON - 7' LONG	
77	2 1/2" ANGLE IRON - 7' LONG	
78	2 1/2" ANGLE IRON - 7' LONG	
79	2 1/2" ANGLE IRON - 7' LONG	
80	2 1/2" ANGLE IRON - 7' LONG	
81	2 1/2" ANGLE IRON - 7' LONG	
82	2 1/2" ANGLE IRON - 7' LONG	
83	2 1/2" ANGLE IRON - 7' LONG	
84	2 1/2" ANGLE IRON - 7' LONG	
85	2 1/2" ANGLE IRON - 7' LONG	
86	2 1/2" ANGLE IRON - 7' LONG	
87	2 1/2" ANGLE IRON - 7' LONG	
88	2 1/2" ANGLE IRON - 7' LONG	
89	2 1/2" ANGLE IRON - 7' LONG	
90	2 1/2" ANGLE IRON - 7' LONG	
91	2 1/2" ANGLE IRON - 7' LONG	
92	2 1/2" ANGLE IRON - 7' LONG	
93	2 1/2" ANGLE IRON - 7' LONG	
94	2 1/2" ANGLE IRON - 7' LONG	
95	2 1/2" ANGLE IRON - 7' LONG	
96	2 1/2" ANGLE IRON - 7' LONG	
97	2 1/2" ANGLE IRON - 7' LONG	
98	2 1/2" ANGLE IRON - 7' LONG	
99	2 1/2" ANGLE IRON - 7' LONG	
100	2 1/2" ANGLE IRON - 7' LONG	



DETAIL "A" OF FEED TROUGH

THIS PLAN DEVELOPED BY THE  
FARM SHOP SECTION OF THE  
M.D. SMO. AND AG. ED. DEPT., V.M.I.

COOPERATIVE EXTENSION WORK IN  
AGRICULTURE AND HOME ECONOMICS  
DEPARTMENT OF AGRICULTURAL ENGINEERING  
UNIVERSITY OF MARYLAND  
UNITED STATES DEPARTMENT OF AGRICULTURE  
CATTLE FEEDER  
VA. '32 EX. 5768 SHEET 1 OF 1

CAPACITY:  
APPROX. 50 BU.