

JOIN PURLINS WITH THE JOIST NAILS
AS IN PLAN AND FASTEN TO METAL
RAFTERS WITH ONE 10D TO EACH JOIST AND
ONE COMMERCIAL FRAMING ANCHOR.

ROOFING TO BE 2x8 CORRUGATED METAL,
TWO ROWS OF 11-0" SHEETS

2x12x10-0" RAFTER

3x12x10-0" RAFTER

PLYWOOD GUSSETS
BOTH SIDES

PLYWOOD GUSSETS
FROM EACH SIDE

PLYWOOD GUSSETS
FROM EACH SIDE

PLYWOOD GUSSETS
FROM EACH SIDE

PLYWOOD GUSSETS
FROM EACH SIDE

PLYWOOD GUSSETS
FROM EACH SIDE

PLYWOOD GUSSETS
FROM EACH SIDE

PLYWOOD GUSSETS
FROM EACH SIDE

PLYWOOD GUSSETS
FROM EACH SIDE

PLYWOOD GUSSETS
FROM EACH SIDE

PLYWOOD GUSSETS
FROM EACH SIDE

PLYWOOD GUSSETS
FROM EACH SIDE

PLYWOOD GUSSETS
FROM EACH SIDE

PLYWOOD GUSSETS
FROM EACH SIDE

PLYWOOD GUSSETS
FROM EACH SIDE

PLYWOOD GUSSETS
FROM EACH SIDE

PLYWOOD GUSSETS
FROM EACH SIDE

PLYWOOD GUSSETS
FROM EACH SIDE

PLYWOOD GUSSETS
FROM EACH SIDE

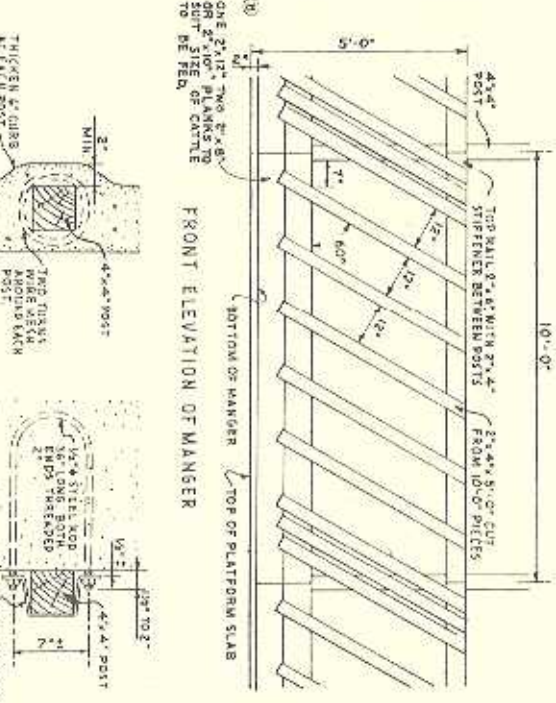
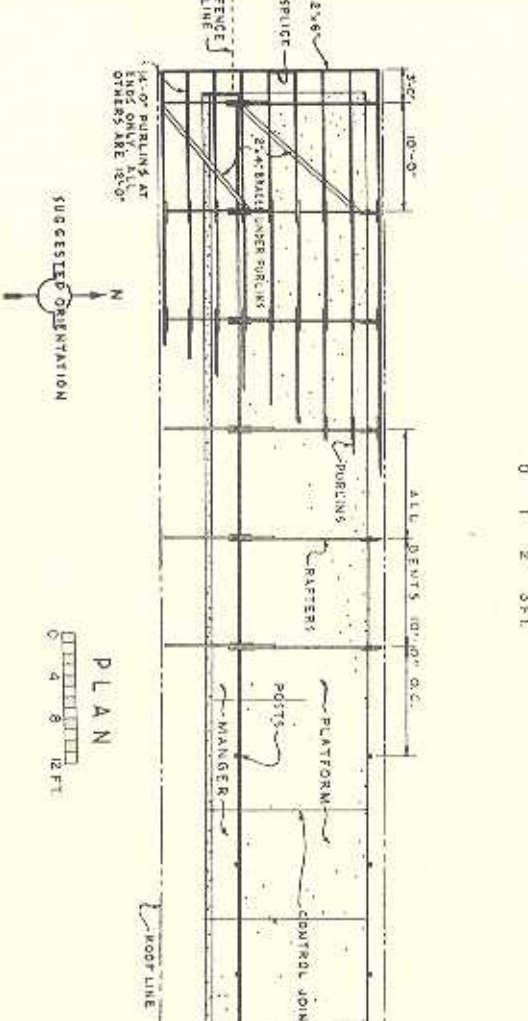
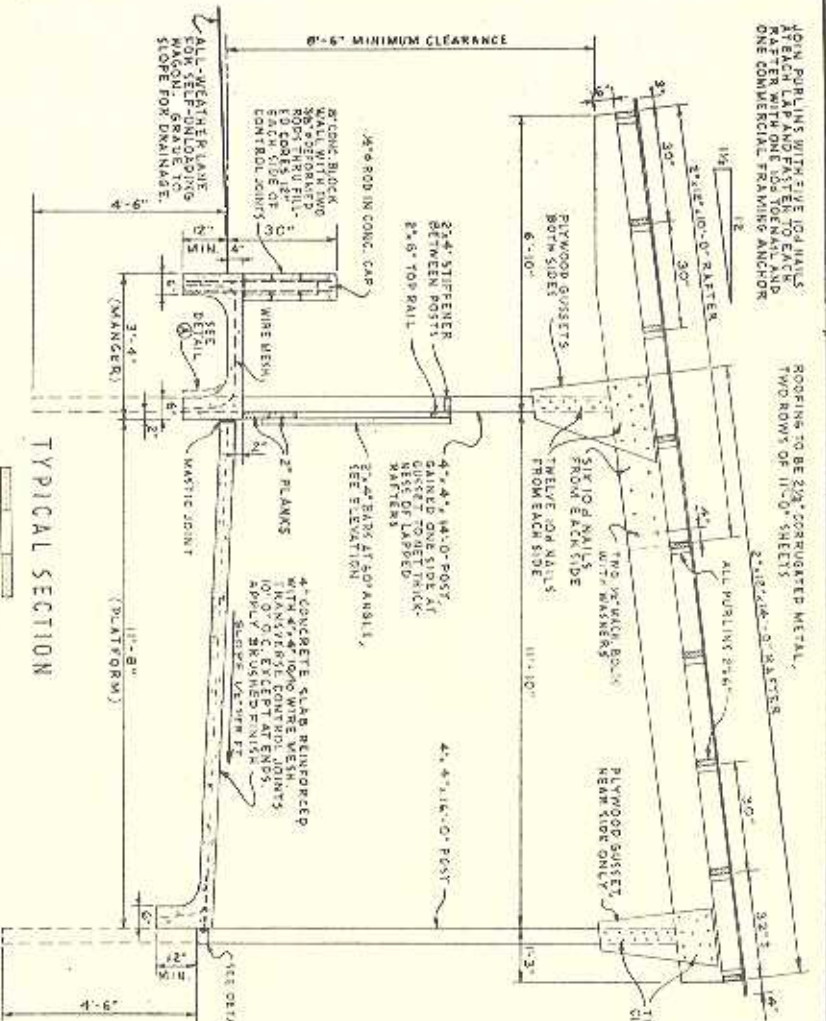
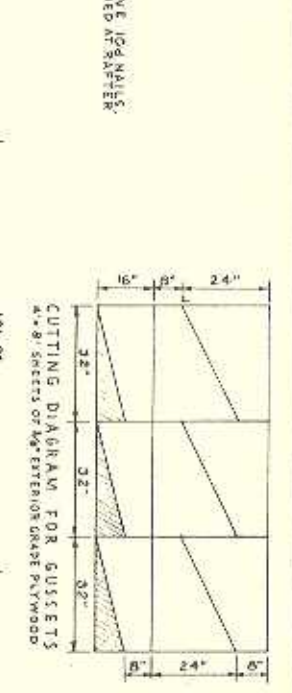
PLYWOOD GUSSETS
FROM EACH SIDE

PLYWOOD GUSSETS
FROM EACH SIDE

PLYWOOD GUSSETS
FROM EACH SIDE

PLYWOOD GUSSETS
FROM EACH SIDE

PLYWOOD GUSSETS
FROM EACH SIDE



- GENERAL NOTES**
1. POSTS & PLANK MANGER FRONT SHALL BE PRESSURE TREATED PRESERVATIVE.
 2. POSTS SHALL BE PULLED & SMOOTH SAW, SUBSTITUTED IF DISAPPEARED.
 3. THIS FEEDER MAY BE BUILT ANY LENGTH, IN UNITS OF TEN FEET.
 4. THE ROOF STRUCTURE IS SUITABLE FOR AREAS WHERE WINDS AND WINDS DO NOT EXCEED 88 MILES PER HOUR.

COOPERATIVE EXTENSION WORK IN
AGRICULTURE AND HOME ECONOMICS
DEPARTMENT OF AGRICULTURAL ENGINEERING
UNIVERSITY OF MARYLAND
UNIVERSITY EXTENSION SERVICE AND AGRICULTURAL COOPERATION
FENCE-LINE FEEDER FOR CATTLE
TYPE A
USDA 58 EX. 5854 SHEET 1 OF 1