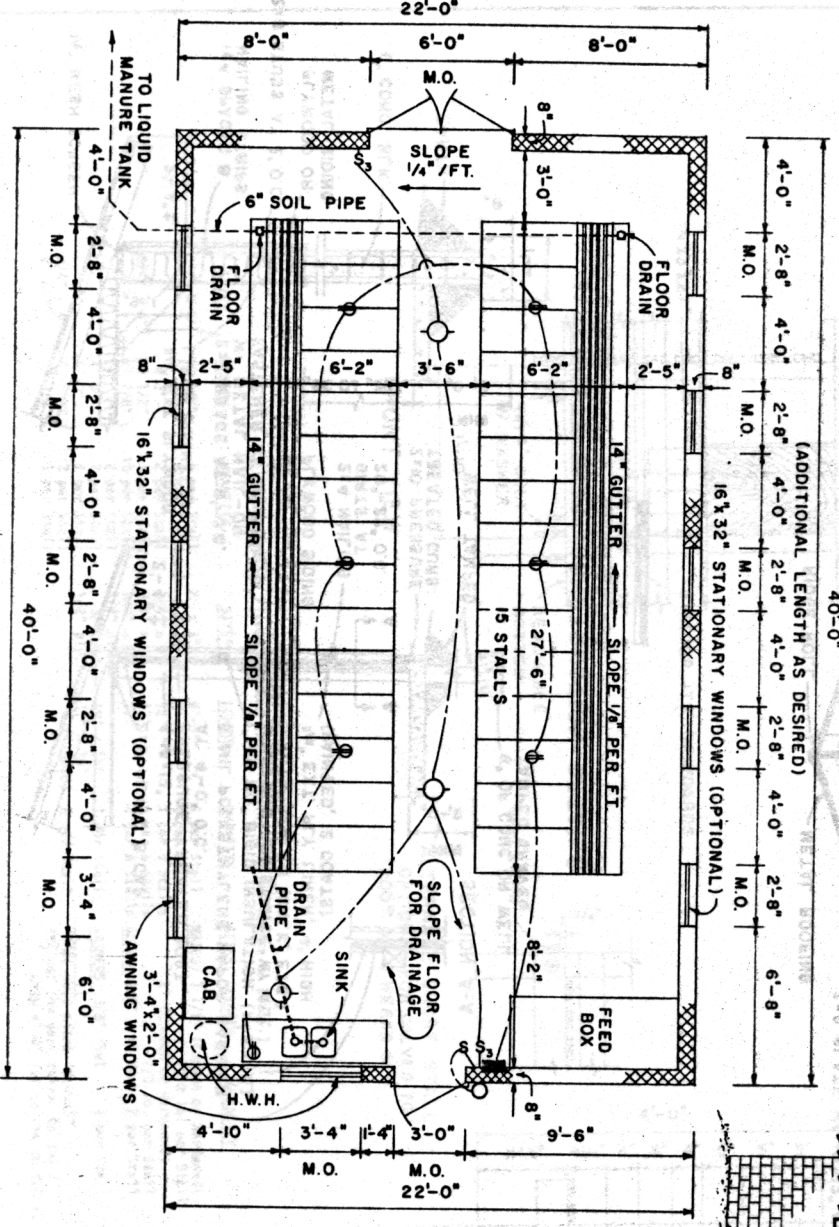
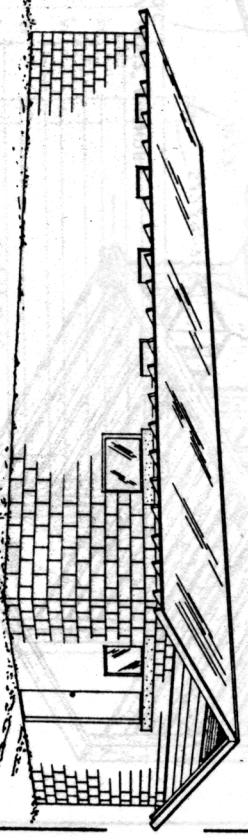


- ELECTRICAL SYMBOLS**
- MAIN POWER ENTRANCE PANEL
 - SINGLE-POLE TOGGLE SWITCH
 - ⊕ 3-WAY TOGGLE SWITCH
 - ⊕ TWIN-CONVENIENCE OUTLET WITH HINGED PROTECTIVE COVER
 - CEILING MOUNTED FIXTURE, 100 TO 150 WATT LAMP
 - WALL BRACKET MOUNTED FLOODLIGHT (OPTIONAL)

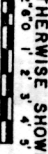
SIDE ELEVATION

FRONT ELEVATION



NOTES:
 CONSULT LOCAL HEALTH AND BUILDING CODE AUTHORITIES BEFORE STARTING CONSTRUCTION. THESE PLANS ARE FOR USE AS A GUIDE. IF A CONSTRUCTION CONTRACT IS TO BE MADE, WRITTEN SPECIFICATIONS ARE NEEDED. FOR RECOMMENDED VENTILATION AND HEATING SYSTEMS, SEE DATA ON SHEET 2. DETERMINE VENTILATION SYSTEM AND EQUIPMENT TO BE INSTALLED BEFORE STARTING CONSTRUCTION.

SCALE: 1/4"=1'-0" UNLESS OTHERWISE SHOWN



FLOOR PLAN

BASED ON: UNIV. OF KY. PLAN II 772-36

Agricultural Engineering Department	
Cooperative Extension Service	
University of Maryland	
College Park - Eastern Shore	
U.S. Dept. of Agriculture Cooperating	
GALF BARN	
ENVIRONMENTALLY CONTROLLED	
KY. '74	6186
	SHEET 1 OF 3