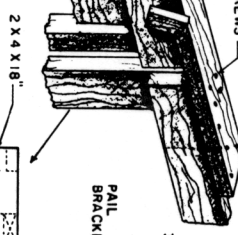


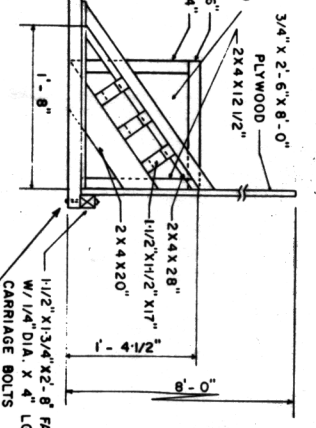
PLAN

10d NAILS DRILL TOP MEMBER
(STAGGER NAILS)
ROUND HEAD WOODSCREWS
* 14-3" LG

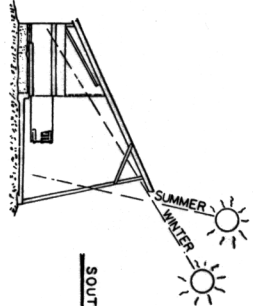
LATCH - 3/4" X 1/2" X 3"
FASTER W/ * 14-3" LG
ROUND HEAD WOODSCREW
W/ WASHER



TOP VIEW



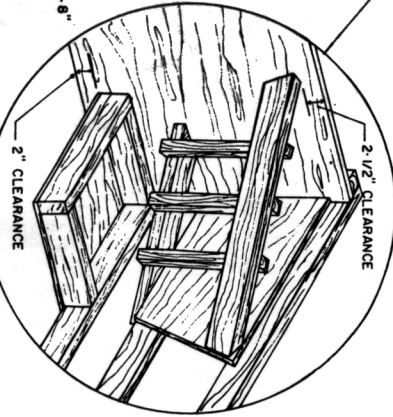
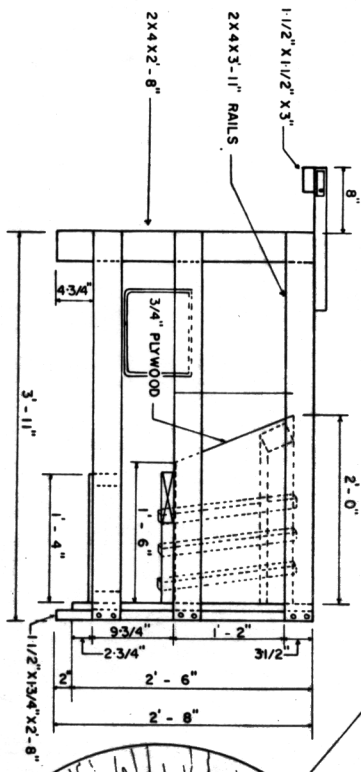
APPROXIMATE SUN ANGLES



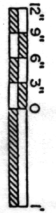
NOTES:

1. CALF PEN PARTITIONS ARE TELESCOPED INWARD FOR TRACTOR CLEANING. MANURE FROM RAISED PORTION OF PENS IS SCRAPED ONTO LOWER LEVEL AS NEEDED. TELESCOPING ARRANGEMENT IS ALSO USED FOR PUTTING CALVES IN PENS.
2. POLE IS ANGLED OUTWARD AT BASE TO IMPROVE CLEARANCE WHEN USING TRACTOR FOR CLEANING.
3. FRONT EDGE OF ROOF LOCATED SUFFICIENTLY FORWARD OF REAR OF PENS AND AT A HEIGHT TO PERMIT NOON SOLAR PENETRATION TO BACK EDGE OF PENS FOR 2 WINTER MONTHS AT 36° N. LATITUDE AND FOR 4 WINTER MONTHS AT 44° N. LATITUDE. PENETRATION WILL BE GREATER AT OTHER TIMES THAT SUN IS SHINING. CALVES, WHEN IN EXTENDED PORTION OF PEN, WILL BE FULLY SHADED AT NOON FOR 2 SUMMER MONTHS AT 44° N. LATITUDE AND 4 SUMMER MONTHS AT 36° N. LATITUDE. SINCE THE CALVES DO NOT NEED TO STAND FULLY AT THE FRONT OF THE PENS, PARTITIONS OFFER SOME SHADE NEAR DAWN OR DUSK, AND THEIR ROOFIES ARE USUALLY ABOVE FLOOR HEIGHTS, THEY WILL HAVE ADEQUATE SHADE FOR THE ENTIRE SUMMER EVEN AT 48° N. LATITUDE. RAISING THE HEIGHT OF THE FRONT EDGE OF THE ROOF WILL INCREASE THE AREA THAT RECEIVES SOLAR ENERGY.
4. STRUCTURE DESIGNED FOR A 30 LB/SQ FT ROOF LOAD

FRONT VIEW



SLIDING PARTITION DETAILS



UNITED STATES DEPARTMENT OF AGRICULTURE COOPERATING			
AND			
COOPERATIVE EXTENSION SERVICE			
AGRICULTURE AND HOME ECONOMICS			
SOLAR CALF SHELTER WITH			
SLIDE-IN PARTITION			
W VA 86	6377	SHEET 1 OF 2	