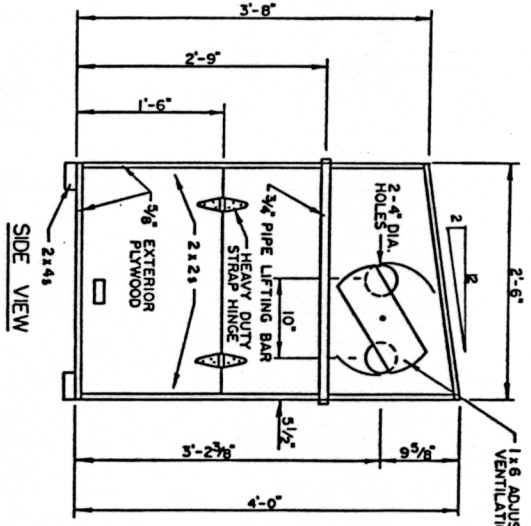


FRONT VIEW



SIDE VIEW

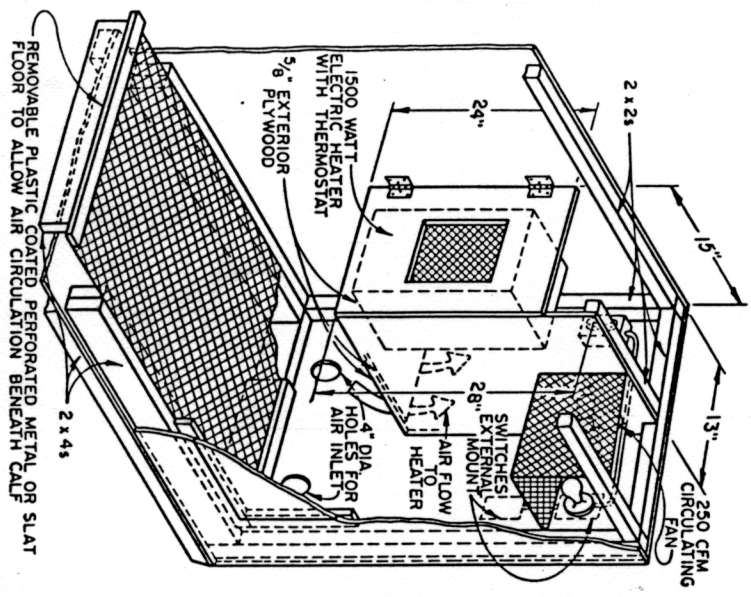


SCALE

APPROXIMATE BILL OF MATERIALS

NUMBER	DESCRIPTION
4	2x4x8' - RUNNERS AND FLOOR SUPPORTS
2	2x2x8' - FRAMEWORK
1	1x6x2' - ADJUSTABLE COVER
3	1x3x8' - DOOR STOP, LATCHES AND FLOOR EDGE
3	5/8x4x8' - EXTERIOR PLYWOOD - SIDES, ROOF AND FLOOR
2	6\"/>
2	4\"/>
1	1/8\"/>
1	2\"/>
1	2\"/>
2	3/4\"/>
4	3/8\"/>
1	13\"/>
ELECTRICAL COMPONENTS	
2	SPST (SINGLE POLE SINGLE THROW) SWITCH
1	ELECTRICAL HANDY BOX
2	WEATHER PROOF ELECTRICAL BOXES WITH WEATHER PROOF SWITCH COVERS
1	DUPLEX OUTLET (125 VOLT - 15 AMPERE)
1	DUPLEX COVER
1	PORCELAIN LIGHT FIXTURE, 60 WATT BULB NO. 14 UF CABLE
1	WIRE DUPLEX OUTLET TO ONE SWITCH FOR HEATER AND FAN
1	1500 WATT ELE/WAIC HEATER WITH INTERNAL FAN AND THERMOSTAT
1	250 CFM FAN *

*CFM - CUBIC FEET OF AIR PER MINUTE



SCHEMATIC (no scale)

NOTE: THIS WARMING BOX IS SUITABLE FOR BOTH INDOOR AND OUTDOOR USE. PRESERVATIVE TREATED LUMBER SHOULD BE USED THROUGHOUT AND WATERPROOFING PROVIDED IF USED OUTDOORS.

1. FEED CALF 2 QUARTS OF COLOSTRUM IMMEDIATELY FOLLOWING BIRTH AND AGAIN AT 6, 12, AND 18 HOURS.
2. ADMINISTER VETERINARIAN PRESCRIBED MEDICINES AND VACCINATIONS.
3. APPLY NAVAL CLIP AND OR DIP IN IODINE.
4. PLACE CALF IN PREPARED CALF WARMING BOX AND MAINTAIN 90 F TEMPERATURE.
5. OBSERVE CALF PERIODICALLY FOR ACTIVITY AND PROGRESS OF DRYING. REMOVE CALF WHEN DRY.
6. BRUSH HAIR COAT ERECT.
7. PLACE CALF ON WELL BEDDED OUTSIDE MANAGEMENT PROGRAM.
8. CONTINUE WITH RECOMMENDED CALF MANAGEMENT PROGRAM.