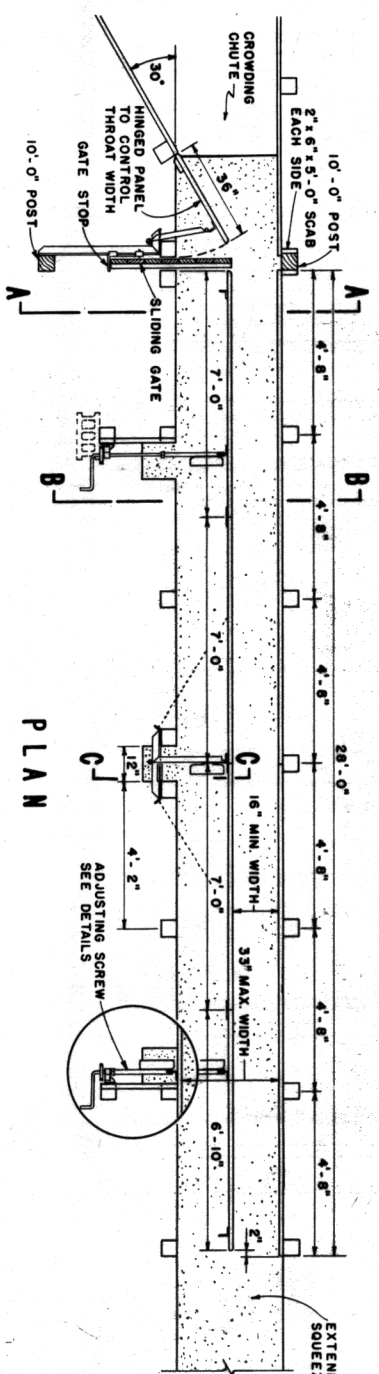
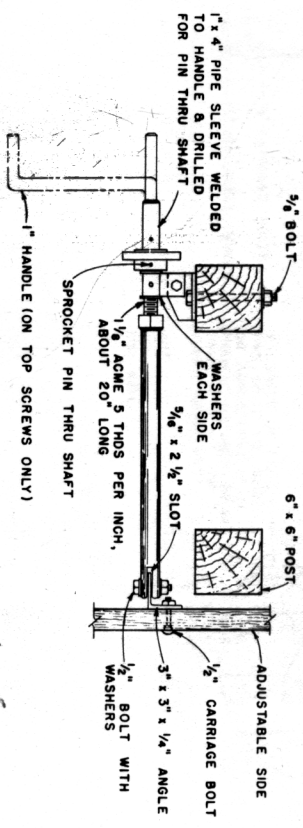


**ADJUSTING SCREW DETAILS**  
(4 REQUIRED)

SCALE: 1/2" = 1'-0"

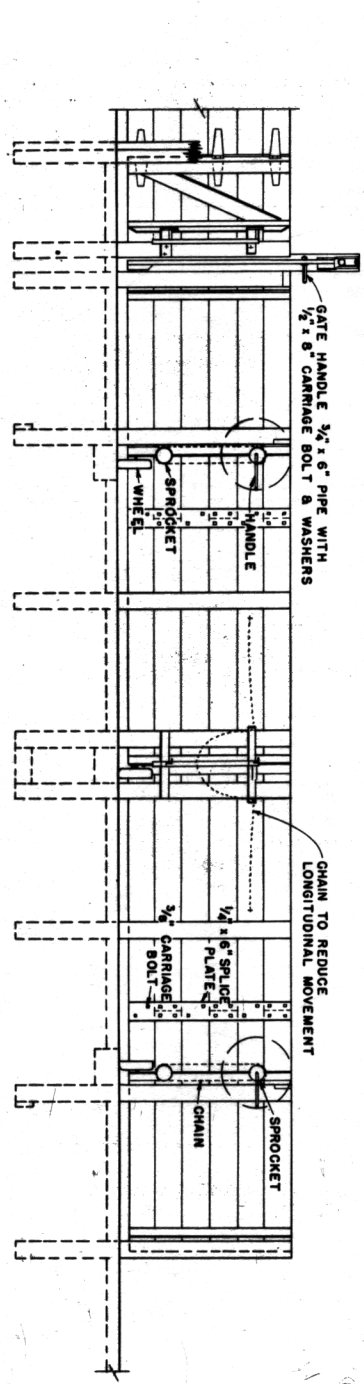


**PLAN**

NOTE: ALL POSTS ARE 6" x 6" x 8'-0" UNLESS OTHERWISE NOTED.

2" x 10" PLANKING FOR FIXED & MOVABLE SIDES ALL 14'-0" LENGTHS WHICH MAY BE CUT TO PROVIDE STAGGERED JOINTS.

ALL WOOD TO BE PRESSURE-TREATED WITH PRESERVATIVE.



**ELEVATION**  
(OPERATORS SIDE)

SCALE: 3/8" = 1'-0" UNLESS OTHERWISE NOTED