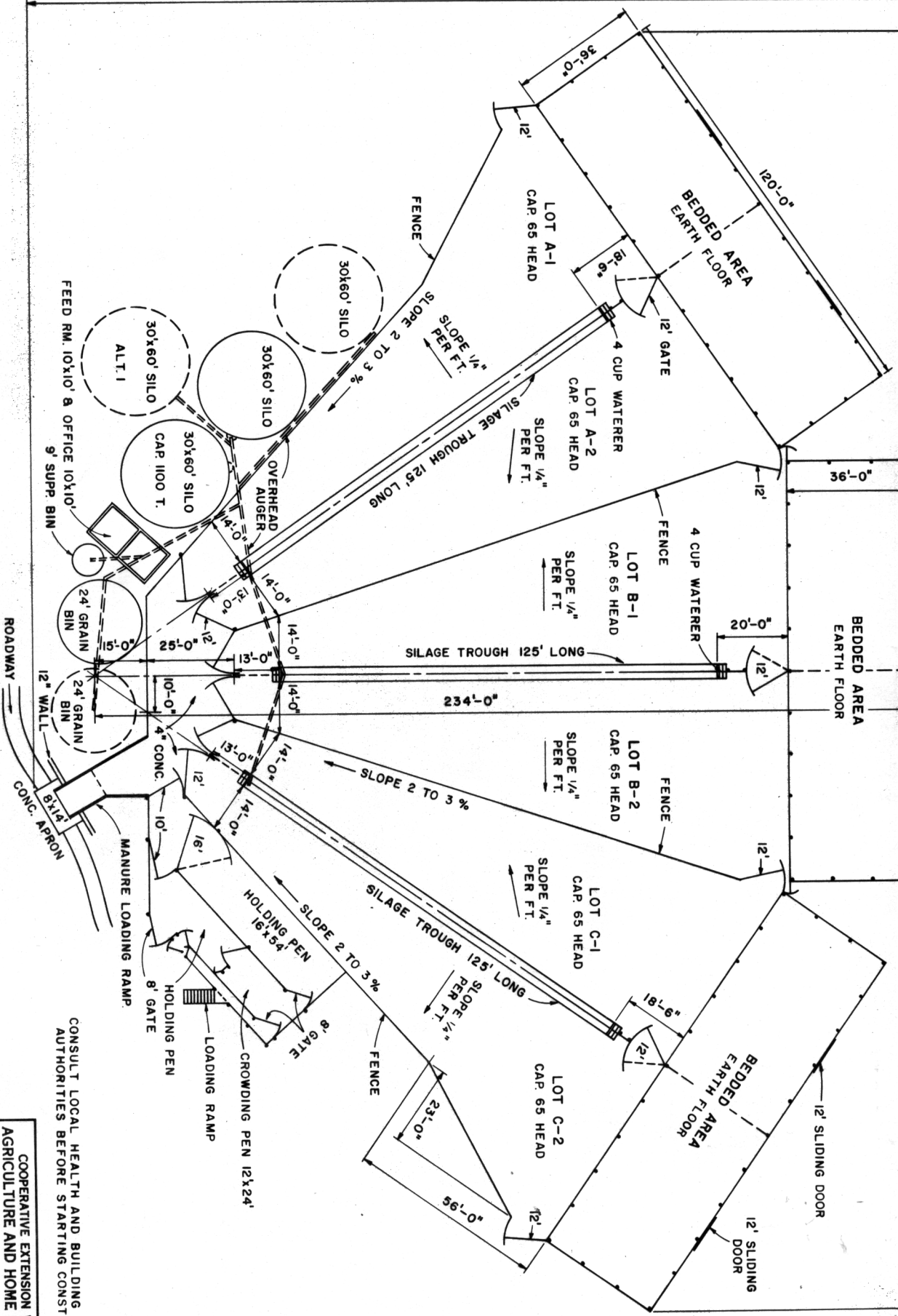


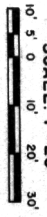
251'-0"±



NOTES:
 PROVIDE FOR TWO 12' SLIDING DOORS IN REAR WALLS
 FOR MOVING BEDDING MATERIAL INTO BEDDED AREAS.
 ALL LOTS TO BE PAVED WITH 4" CONCRETE MIX: 6-6-6
 NOT LESS THAN 6 SACKS CEMENT PER CU. YD.
 NOT MORE THAN 6 GAL. WATER PER SACK OF CEMENT
 6% AIR ENTRAINMENT.

PLAN OF FEED LOTS

SCALE: 1"=20'



ROADWAY

CONC. APRON

MANURE LOADING RAMP

HOLDING PEN 16'x54'

HOLDING PEN

CROWDING PEN 12'x24'

CONSULT LOCAL HEALTH AND BUILDING CODE
 AUTHORITIES BEFORE STARTING CONSTRUCTION

COOPERATIVE EXTENSION WORK IN
 AGRICULTURE AND HOME ECONOMICS

UNITED STATES DEPARTMENT OF AGRICULTURE COOPERATING

FEEDING UNIT

400 STEERS

VA. 75 6210 SHEET 1 OF 1

BASED ON: VPI PLAN NO. SP

