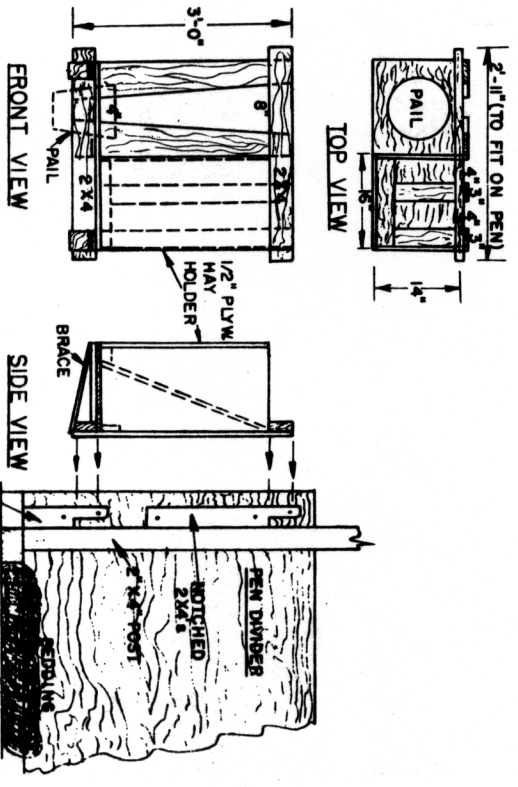
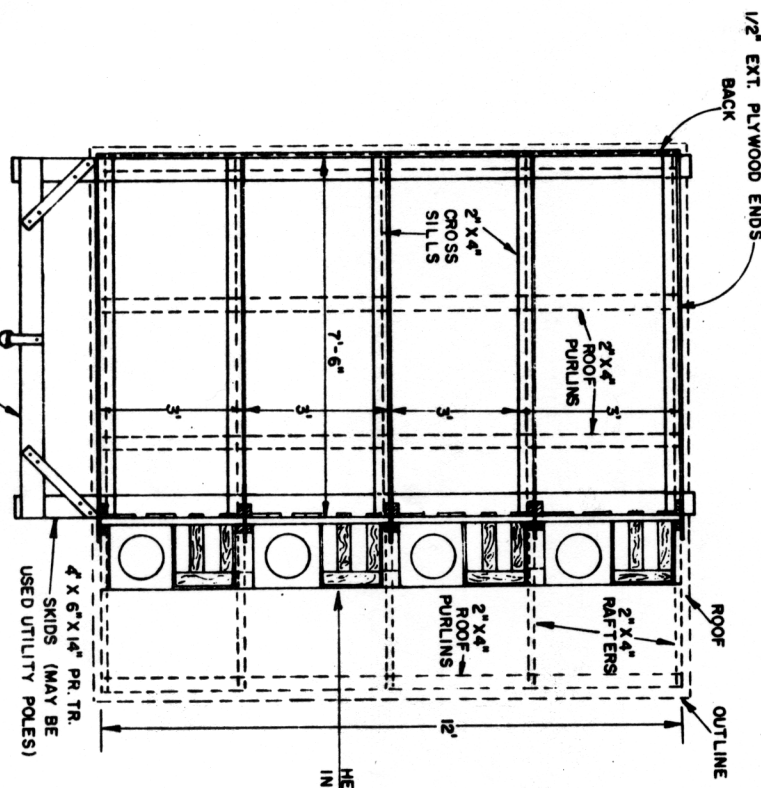


**PERSPECTIVE**  
MULTIPLE PEN BUILDING, CLOSED THREE SIDES, OPEN TO THE SOUTH OR SOUTHEAST 3'-6" ROOF EXTENSION TO PROTECT WORKER AND TO KEEP FEED DRY.  
FOR HEIFERS TO 2 MONTHS OF AGE.



NOTE:  
CONSULT LOCAL HEALTH AND BUILDING CODE AUTHORITIES BEFORE STARTING CONSTRUCTION

BASED ON: PENN. STATE UNIV. PI ANNO 723-919