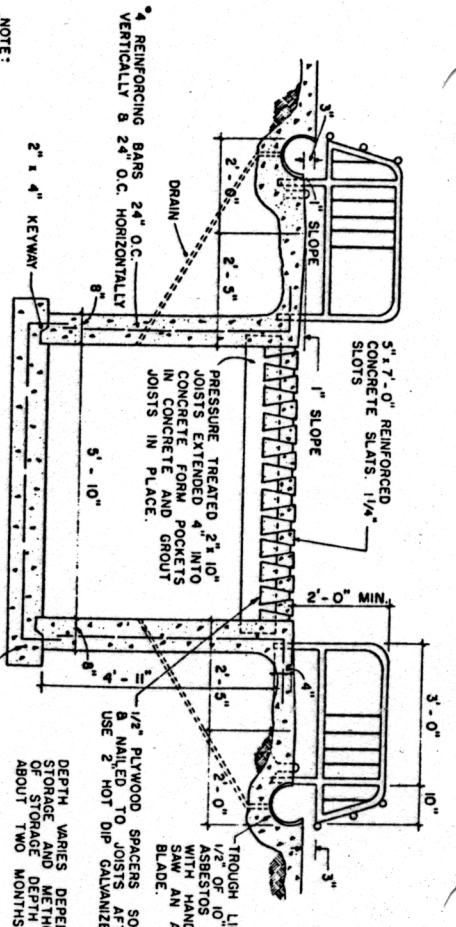


NOTE:
ALL CONCRETE 3000 P.S.I.
UNLESS OTHERWISE SPECIFIED

SECTION "A-A"

2" x 4" KEYWAY
4" REINFORCING BARS
24" O.C. BOTH WAYS



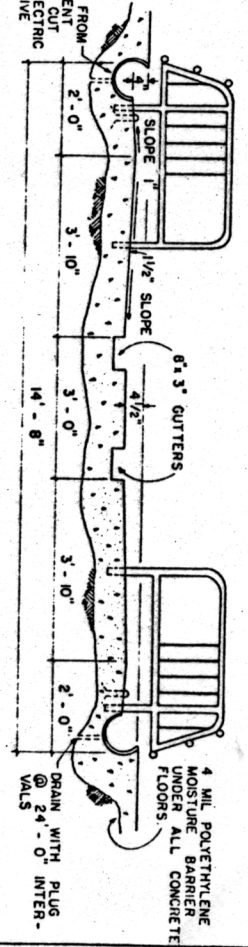
DEPTH VARIES DEPENDING ON REQUIRED LIQUID MANURE STORAGE AND METHOD OF MANURE REMOVAL. ABOUT TWO MONTHS.

1/2" PLYWOOD SPACERS SOAKED IN WOOD PRESERVATIVE
USE 2 NOT DIP GALVANIZED NAILS.

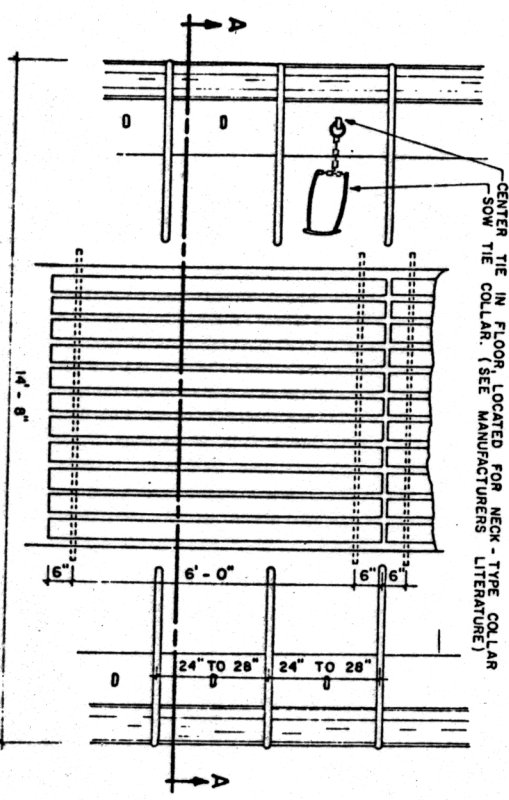
1/2" O.C. ASPHALT WITH HAND ELECTRIC SAW AN ABRASIVE BLADE.

ALTERNATE SECTION "A-A"

WITH SHALLOW GUTTER



4 MIL. POLYETHYLENE MOISTURE BARRIER UNDER ALL CONCRETE FLOORS.
DRAIN WITH PLUG @ 24" O.C. INTERVALS



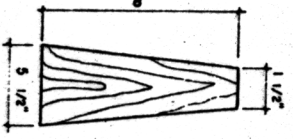
PLAN

4000 PSI CONCRETE

WALKING SURFACE ROUGH-TEXTURED SUCH AS WOOD FLOAT FINISH, NOT STEEL TROWEL.
ROUNDED EDGE FORMED WITH SIDEWALK EDGING TOOL. (1/4" TO 3/8" RADIUS.)

SLAT DETAIL

TYPICAL SECTION NOT TO SCALE

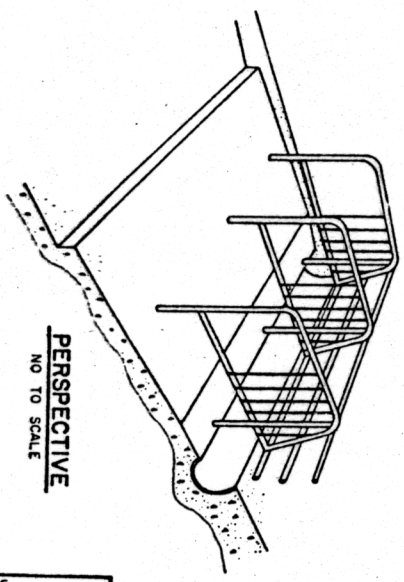


1/2" PLYWOOD SPACER

NOT TO SCALE

NOTES:

- 1. UNBEDD SOWS
 - 2. UNBEDD GUTTERS HAVE NOT HAD EXPERIENCE OF TIGHT CONFINEMENT AND SHOULD NOT BE TIED AND PLAN SHOWS THE NECK-TYPE METAL COLLAR TIE. SOFT COLLAR STRAPS (LEATHER ETC.) ARE MORE SUITABLE AS THEY MUST BE TOO TIGHT IN ORDER TO HOLD SOWS SECURELY.
 - 3. SOME OPERATORS PREFER TYING WITH A BODY STRAP JUST BEHIND THE SHOULDER. RELOCATE FLOOR TIE ROD AS PER MANUFACTURER'S RECOMMENDATIONS.
 - 4. SOME SOWS DO NOT ACCEPT TIES, SO PROVIDE OTHER MEANS OF CONFINEMENT.
- NO WATER BOWLS REQUIRED WITH GESTATION TIE STALLS. FEED THROUGH HOLDS A WATER SUPPLY WHICH IS CONTROLLED BY GUARDED FLOAT VALVES AT 24" O.C. INTERVALS APPROXIMATELY.
1. MEASURE AND PLACE FEED TO EACH SOW. FEED IS WETTED BY DRINKING WATER REMAINING IN TROUGH.
 2. NOTE THAT TROUGH BOTTOM SHOULD BE LEVEL TO SUPPLY EQUAL WATER TO EACH SOW.



PERSPECTIVE

NO TO SCALE



SCALE 1/2" = 1'-0"
UNLESS OTHERWISE NOTE

COOPERATIVE EXTENSION WORK IN AGRICULTURE AND HOME ECONOMICS

UNITED STATES DEPARTMENT OF AGRICULTURE COOPERATING AND NATIONAL EXTENSION SERVICE
GESTATION TIE STALLS (FOR NO BEDDING)
USDA '79 EX. 6332 SHEET 1 OF 1