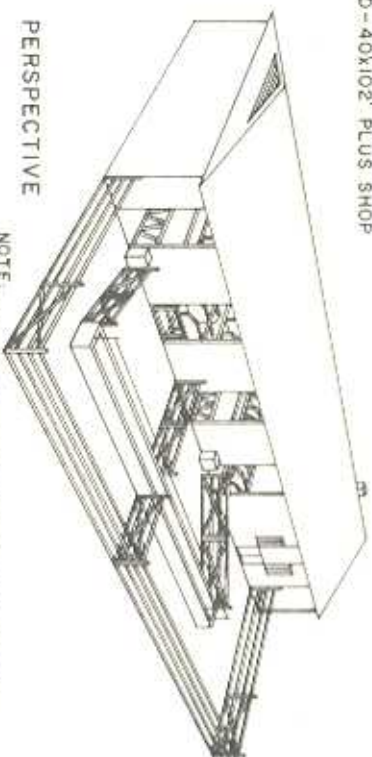


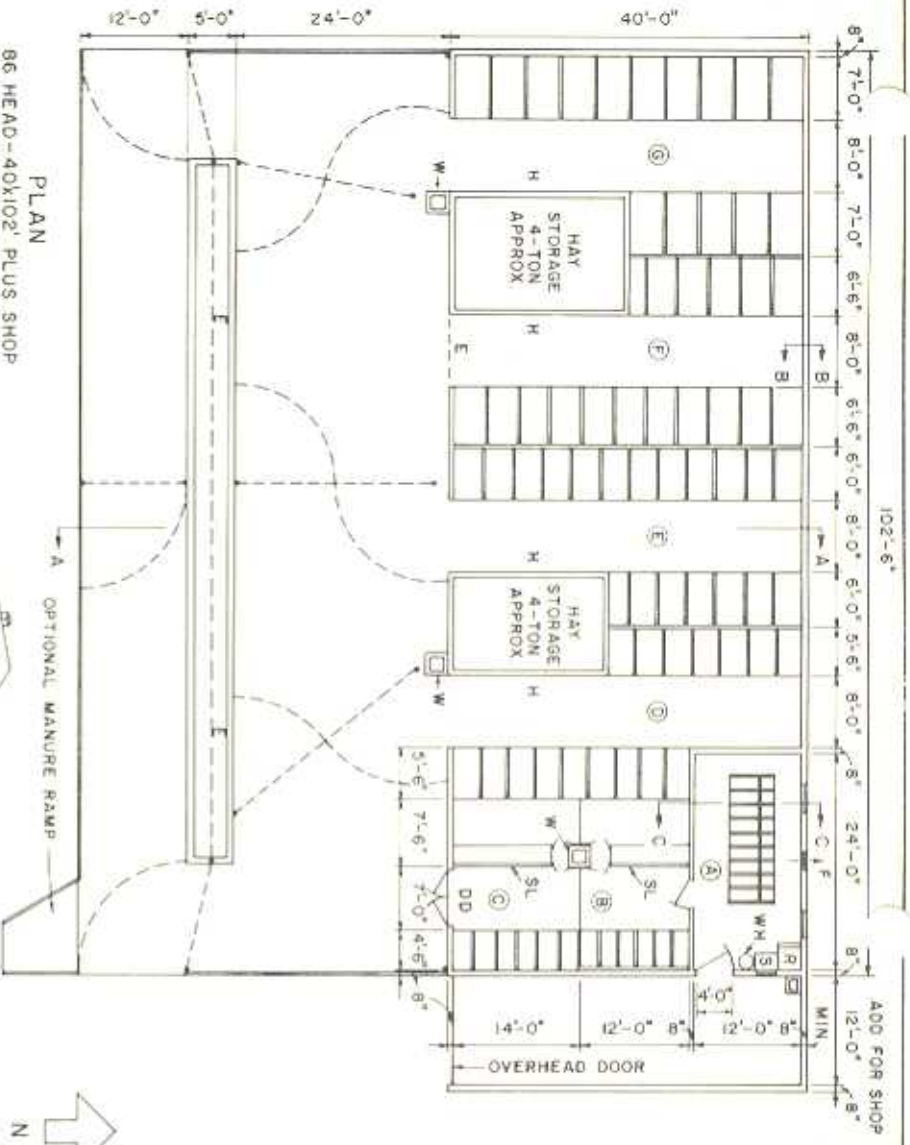
AREA	NO.	HEAD	STALLS *	AGE
(A)	9		CRATES	0-3 MONTHS (NOTE - 1)
(B)	6	2'-0" x 4'-0"		4-5 MONTHS
(C)	6	2'-4" x 4'-6"		6-8 MONTHS
(D)	16	3'-0" x 5'-6"		9-16 MONTHS
(E)	18	3'-3" x 6'-0"		16-20 MONTHS
(F)	16	3'-8" x 6'-6"		21-24 MONTHS
(G)	19	3'-9" x 7'-0"		DRY COWS

PERSPECTIVE



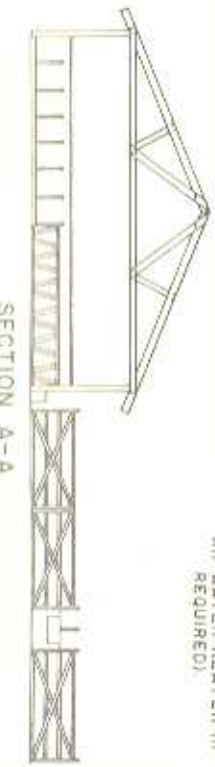
NOTE:
CONSULT LOCAL HEALTH AND BUILDING CODE
AUTHORITIES BEFORE STARTING CONSTRUCTION.

PLAN
86 HEAD-40X102' PLUS SHOP

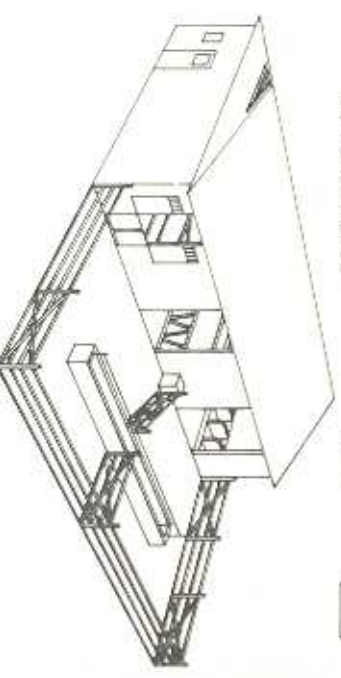


LEGEND

- 1 PROVIDE HEATING IN THIS AREA
- * ADJUST STALL WIDTHS TO SPACE AVAILABLE
- ** ONE STALL MAY BE MADE WIDER FOR BULL
- W WATERER
- S SINK
- R REFRIGERATOR
- E ELECTRIC FENCE LINE
- H HAY FEEDERS
- SL CALF STANCHION LINE
- DD DUTCH DOOR (ALTERNATE-SLIDING DOORS SEE SHEET NO. 5)
- F FAN
- WH WATER HEATER (IF REQUIRED)

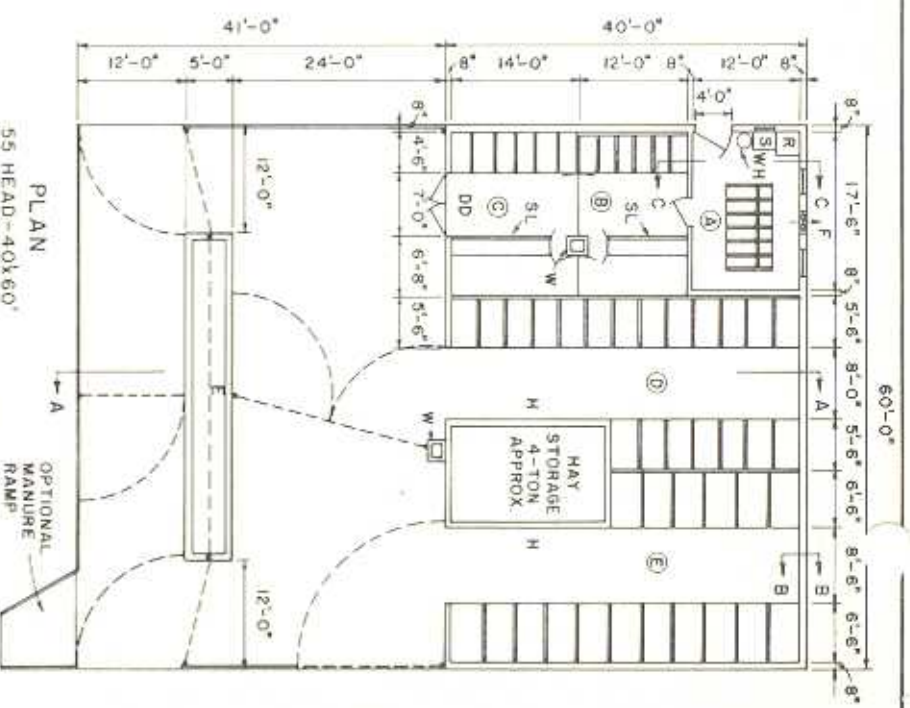


AREA	NO.	HEAD	STALLS *	AGE
(A)	6		CRATES	0-3 MONTHS (NOTE - 1)
(B)	6	2'-0" x 4'-0"		4-5 MONTHS
(C)	6	2'-4" x 4'-6"		6-8 MONTHS
(D)	20	3'-0" x 5'-6"		9-16 MONTHS
(E)	17	3'-8" x 6'-6"		17-23 MONTHS



BASED ON: UNIV. OF MAINE PLAN NO.
36814, 15, 16, 17, 18, 20 & 21.

PLAN
55 HEAD-40X60'



COOPERATIVE EXTENSION WORK IN
AGRICULTURE AND HOME ECONOMICS

DAIRY REPLACEMENT HOUSING

ME: '70 6234 SHEET 1 OF 5

UNITED STATES DEPARTMENT OF AGRICULTURE COOPERATING