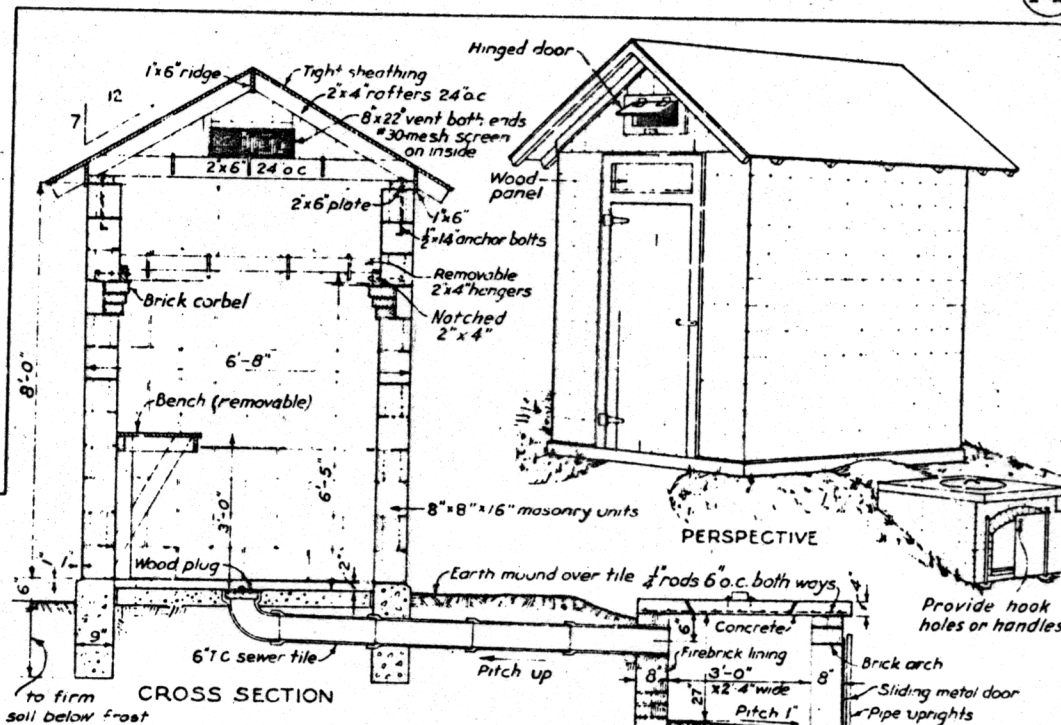
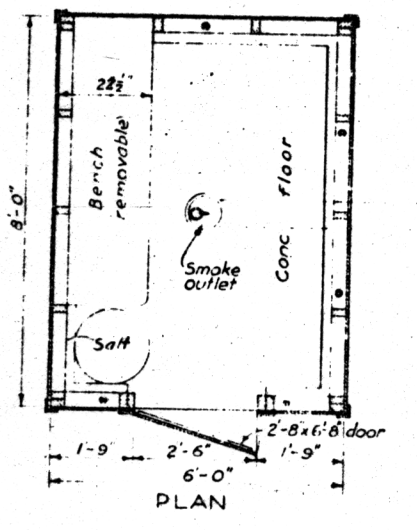


- ### BILL OF MATERIALS SMOKEHOUSE
- CONCRETE** 1:3:5 mix
10 bags cement, 1 cu yd. sand, 1/2 cu yds gravel
- LUMBER**
 3 pieces 2 x 6 x 6-0" cross ties
 3 " 2 x 4 x 12-0" header, bench and hangers
 12 " 2 x 4 x 10-0" sills, studs, and rafters
 23 " 2 x 4 x 8-0" " " plates, and hangers
 2 " 1 x 10 x 8-0" bench and vent doors
 2 " 1 x 6 x 10-0" ridge and trim
 2 " 1 x 6 x 7-0" door battens
 6 " 1 x 4 x 10-0" corner boards and trim
 6 " 1 x 4 x 8-0" trim
 6 " 1 x 6 x 7-0" T & G boards for door
- 275 ft B.M. 6" drop siding
 120 ft B.M. roof sheathing
 Roofing or asphalt shingles to cover 100 sq. ft. roof area
- MISCELLANEOUS**
 7-1/2" x 12" anchor bolts, with nuts and washers
 1 pair 8" Tee hinges, 1 safety hasp
 2-pair 2" x 2" hinges for vent doors
 1-piece metal flashing-6" x 40"
 4 lin ft #30-mesh wire screen -10" wide
 4 lengths 6" T.C. sewer pipe, 1-6" 90° T.C. elbow
 Nails, hanging hooks, and paint not included

- ### FIREBOX
- CONCRETE** 1:2:3 mix
6 bags cement, 1/2 cu yd. sand, 1/2 cu yd. broken hard brick, gravel or stone, (brick mortar heat resistant)
- MISCELLANEOUS**
 10 lin. ft. 6x6 No 9 wire fabric 30" wide
 6 pieces 1/2" steel rods 42" long
 2 " 1/2" pipe 36" long
 1-piece 24" x 32" metal, sliding door



- ### BILL OF MATERIALS SMOKEHOUSE
- CONCRETE AND MORTAR.**
 Concrete 1:3:5 mix, Mortar 1:3+10% lime
 14 bags cement, 1/2 cu yds sand, 2 cu yds gravel
 65 lbs hydrated lime
- 142 8 x 8 x 16" smooth face masonry units.
 12 8 x 4 x 16" " " " "
 2 8 x 4 x 8" " " " "
 14 8 x 8 x 8" " " half " "
 52 8 x 8 x 8" " " corner " "
 12 8 x 8 x 16" " " jamb " "
 12 8 x 8 x 8" " " half " "
- 100 common brick
- LUMBER**
 4 pieces 2 x 6 x 8-0" plates and door jambs
 6 " 2 x 6 x 7-0" " " cross ties
 9 " 2 x 4 x 10-0" rafters, gable-end studs
 7 " 2 x 4 x 6-0" bench and removable hangers
 3 " 2 x 3 x 8-0" door casing
 5 " 1 x 6 x 10-0" " " battens, ridge, trim
 9 " 1 x 4 x 10-0" " " trim
 1 " 1 x 12 x 6-0" bench
 1 " 1 x 10 x 10-0" " " and vent doors
- 120 ft B.M. roof sheathing 56 ft B.M. 1 1/2" T & G door gables
 Roofing or asphalt shingles to cover 100 sq. ft. roof area
- MISCELLANEOUS**
 8-1/2" x 14" anchor bolts, 1 pr 8" Tee hinges, 1 pr 2" x 2" hinges
 6 x 36" metal flashing, 4 lin ft #30-mesh screen 10" wide
 Nails, hanging hooks, and paint not included
- ### FIREBOX
- 7 bags cement, 1/2 cu yd sand, 1/2 cu yd gravel
 450 common brick, 90 firebrick
 9 x 2 steel rods 40" long, 6 x 2 steel rods 48" long
 2 pieces 1 1/2" pipe 36" long
 1 metal sliding door 24" x 32"