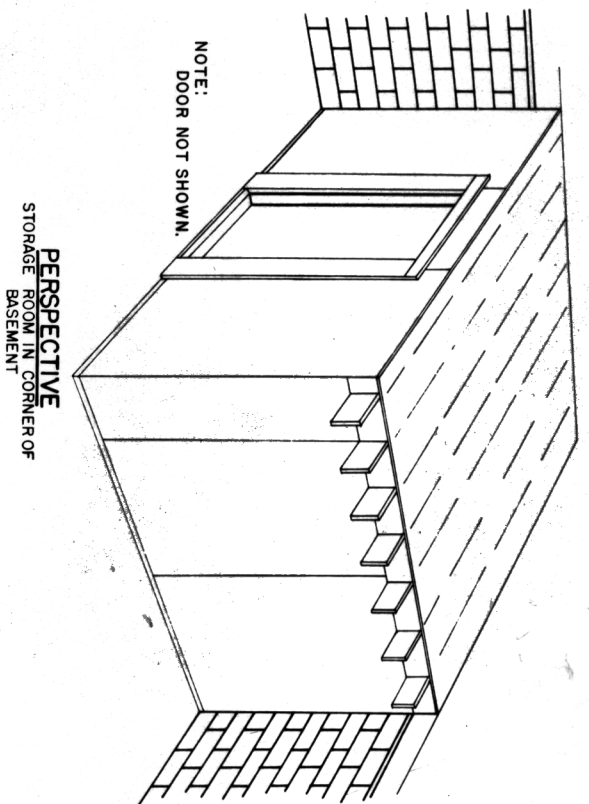
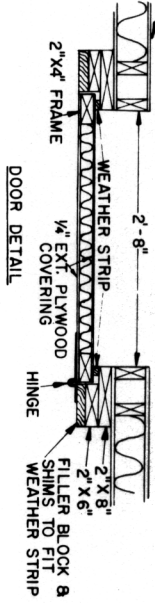


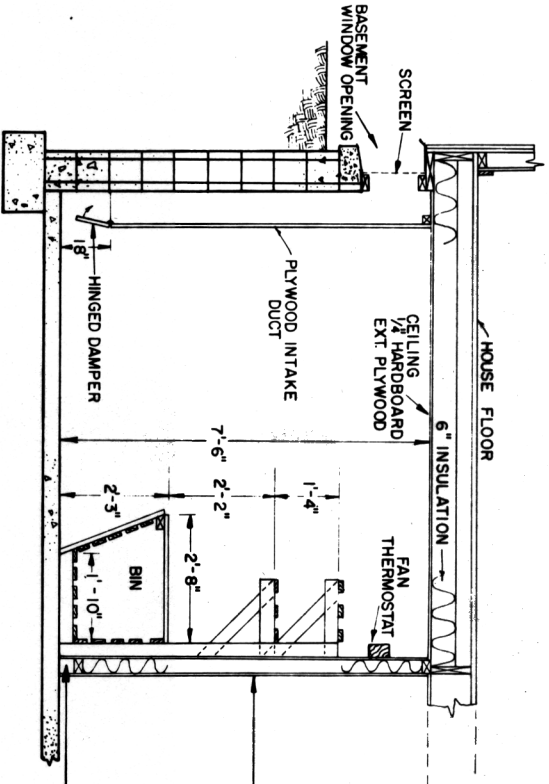
**FLOOR PLAN**  
SCALE 1/2" = 1'



**PERSPECTIVE**  
STORAGE ROOM IN CORNER OF  
BASEMENT



**DOOR DETAIL**



**CROSS SECTION**

- WALL SECTION**
- 1/4" HARDBOARD OR EXT. PLYWOOD
  - 2" X 4" STUDS @ 16" O.C.
  - 3/8" BATT INSULATION, PAPER
  - SIDE OUT
  - 6 MIL PLASTIC VAPOR BARRIER
  - 1/4" HARDBOARD OR EXT. PLYWOOD
- END VIEW CEILING SECTION**
- 2" X 4" SILL, SCREW TO FLOOR
  - 4" X 4" X 1/8" SOLID CONCRETE BLOCK

- DOOR AND FRAME**
- 6 MIL PLASTIC VAPOR BARRIER UNDER JOISTS & OVER INSULATION
  - 1/2" FRICTION FIT INSULATION, NO VAPOR BARRIER UNDER
  - 2" X 8" FILLER BLOCK & 2" X 6" SHIMS TO FIT WEATHER STRIP
  - 1/4" EXT. PLYWOOD WITH 1/2" FOAM INSULATION INSIDE DOOR
  - 1/4" EXT. PLYWOOD

**ALTERNATIVE TEMPERATURE CONTROLS**

- SINGLE THERMOSTAT - INSIDE CONTROL, OFF AT SET LEVEL TO PREVENT FREEZING, MANUAL OFF TO PREVENT WARMING.
- DUAL THERMOSTATS - OUTSIDE CONTROL, OFF AT SET LEVEL TO PREVENT WARMING, INSIDE SET TO PREVENT FREEZING.
- DIFFERENTIAL THERMOSTAT, ON WHEN OUTSIDE COOLER THAN INSIDE, OFF AT SET LEVEL TO PREVENT FREEZING.

SCALE: 1/2" = 1'-0" UNLESS OTHERWISE SHOWN.

COOPERATIVE EXTENSION WORK IN  
AGRICULTURE AND HOME ECONOMICS

UNITED STATES DEPARTMENT OF AGRICULTURE COOPERATING  
AND  
FRUIT & VEGETABLE  
STORAGE ROOM

PA. 75 6228 SHEET 1 OF 1