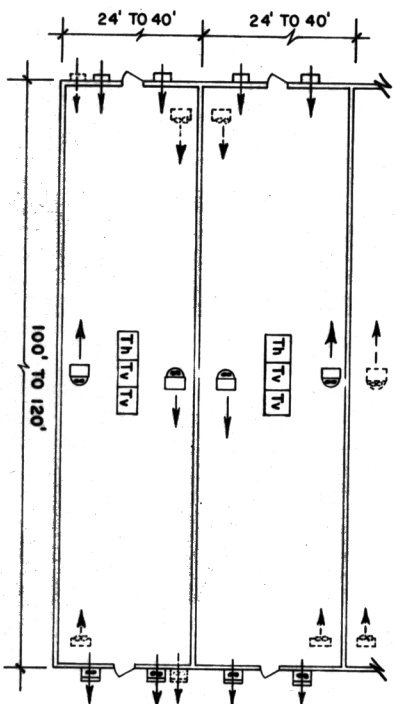
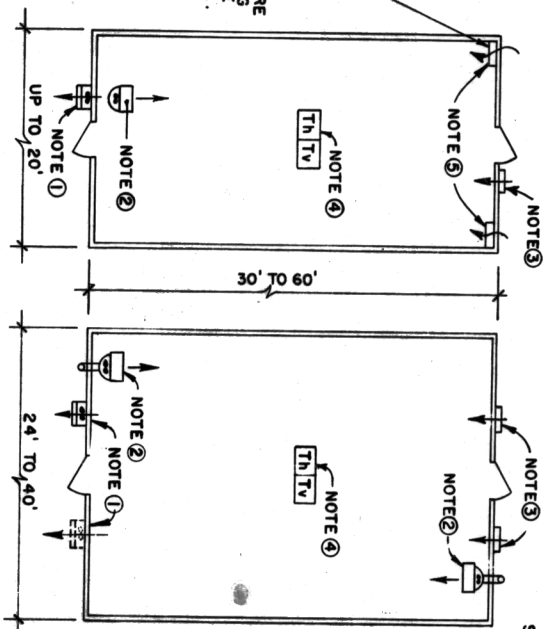


LIGHTWEIGHT ALUM.  
OR STIFF PLASTIC FLAP  
W/LEATHER OR CANVAS  
HINGES, PER NOTE 5

PLASTIC OR  
FIBERGLASS ENCLOSURE  
INSIDE HOUSE, OPENING  
AT BOTTOM TO OUTSIDE  
FOR FRESH AIR INLET..

GRAVITY - FLAP  
FRESH AIR INLET  
PER NOTE 5



### RIDGE & FURROW

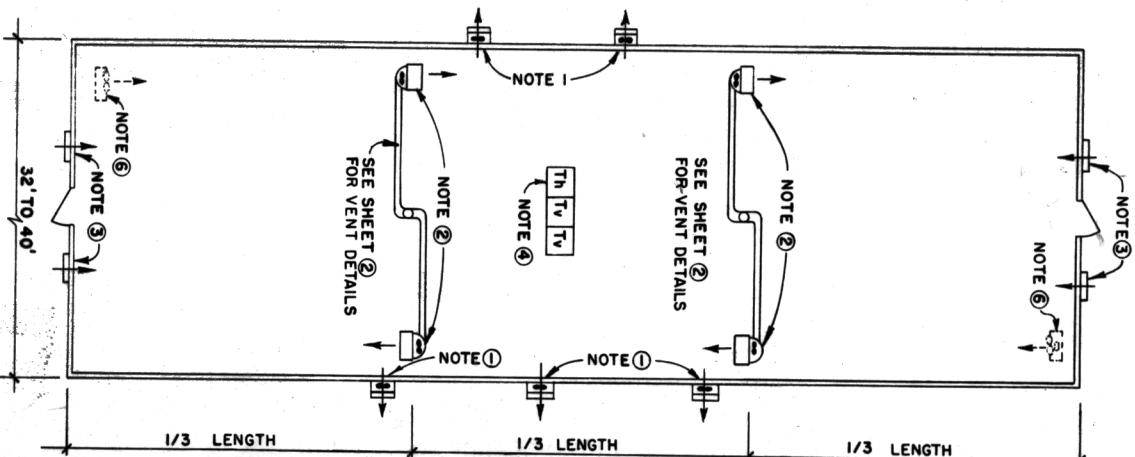
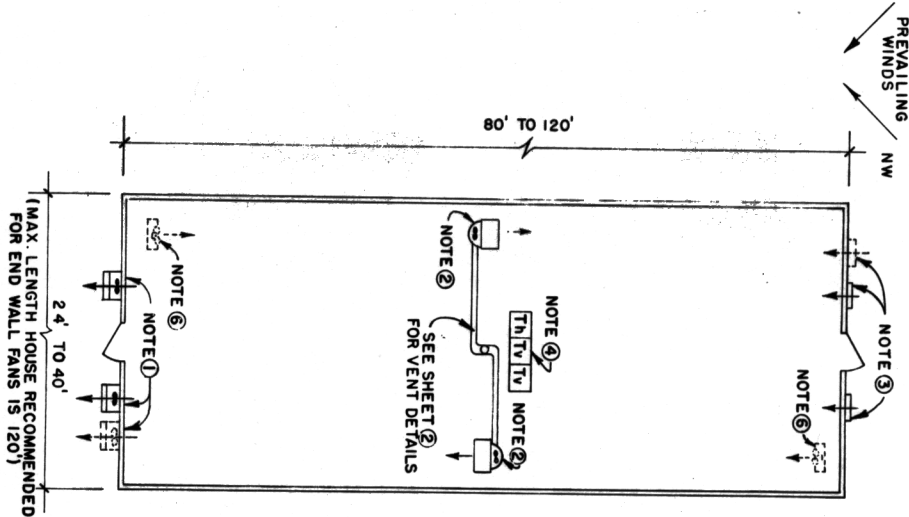
SCALE: NONE

#### NOTES ON EQUIPMENT

1. Single - or two-speed exhaust fan(s) with gravity shutter mounted above or beside door, or on side for small houses.
2. Unit heater supported by pipe framework anchored in ground, or suspended from roof structure as shown by installation diagram, sheet 2.
3. Motorized fresh air inlet shutter(s) mounted above door, or in endwall. Deflector baffle shown by installation diagram, sheet 2, may be used on first shutter that opens in winter to deflect air upward for mixing and prevent cold drafts on plants. Shutters same size as fans of Note 1.
4. Heat and ventilation control thermostats mounted near center of house of ground bed, bench, or eye-level depending on crop and zone of temperature sensing desired. (NOTE: Mercury bulb types to be rigidly mounted and leveled for accurate operation.)
5. Gravity-top air inlet sized for 1sq. ft./800 C.F.M. See diagram for construction. For the larger house, build these inlets for 1/2 of total ton C.F.M. and use a motorized inlet shutter for remaining C.F.M.
6. Use propeller-type circulation fans of 2,000-3,000 C.F.M., free-delivery, suspended approximately 6' high for air circulation.

#### EQUIPMENT LEGEND

- VENTILATION FANS: EXHAUST FLOW WITH GRAVITY SHUTTERS, WALL MOUNTED
- ALTERNATE OR ADDITIONAL LOCATION OF VENTILATION FAN(S)
- MOTORIZED FRESH AIR INLET SHUTTER(S).
- OPTIONAL CIRCULATION FANS FOR INCREASED AIR CIRCULATION.
- UNIT HEATER (GAS OR OIL - FIRE VENTED TYPE, OR HOTWATER OR STEAM FIN COILED TYPE)
- HEAT CONTROL THERMOSTAT(S)
- VENTILATION CONTROL THERMOSTAT(S)



## EQUIPMENT LAYOUT FOR VARIOUS SIZE HOUSES

SELECT LAYOUT SUITABLE FOR YOUR HOUSE

COOPERATIVE EXTENSION WORK IN  
AGRICULTURE AND HOME ECONOMICS

UNITED STATES DEPARTMENT OF AGRICULTURE COOPERATING  
AND  
GREENHOUSE HEATING  
AND VENTILATING SYSTEMS

KY '75 6197 SHEET 1 OF 3

BASED ON: UNIV. OF KY. PLAN NO. 11,811-7