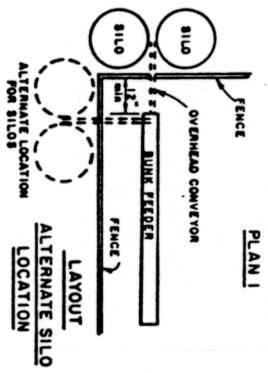


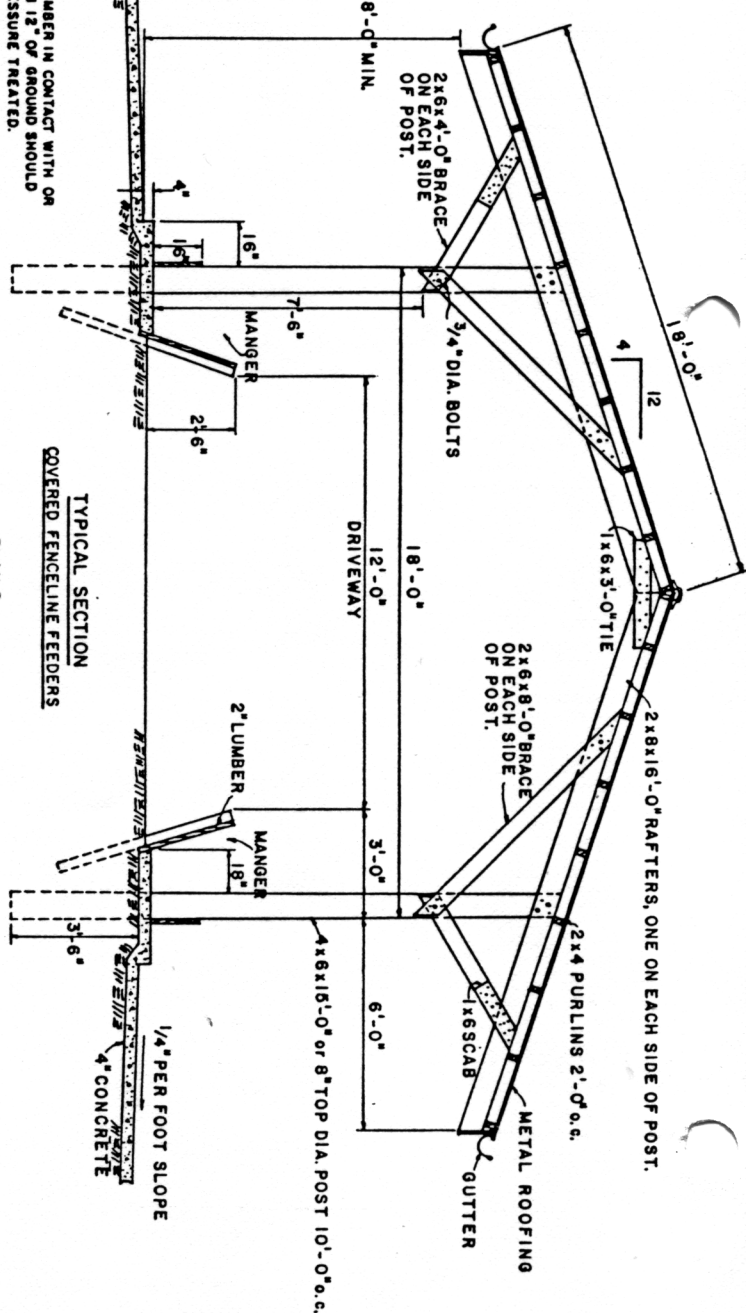
TYPICAL SECTION



PLAN 1

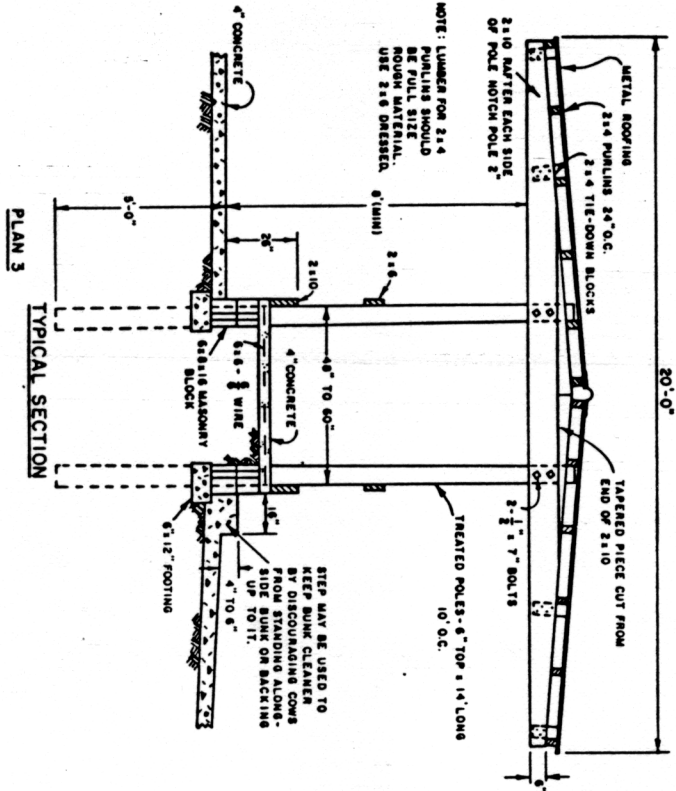
NOTE: ALL LUMBER IN CONTACT WITH OR WITHIN 12" OF GROUND SHOULD BE PRESSURE TREATED.

CAUTION: SOME PRESSURE TREATED POSTS & LUMBER USE PRESERVATIVE THAT EPA DOES NOT ALLOW IN CONTACT WITH FEED. IN SUCH CASES, PLYWOOD OR PLASTIC SHOULD BE USED AS A LINER. CHECK SUPPLIER OR LABELS FOR GUIDANCE.

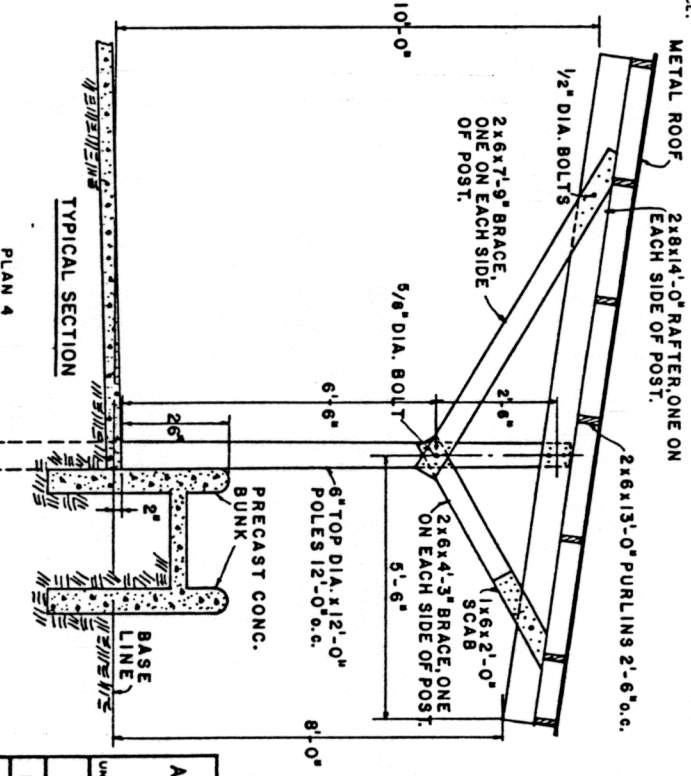


TYPICAL SECTION

PLAN 2



PLAN 3



TYPICAL SECTION

PLAN 4