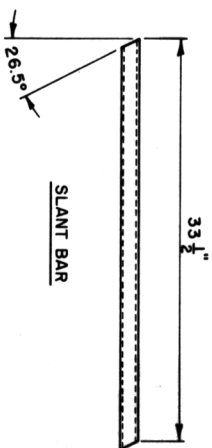


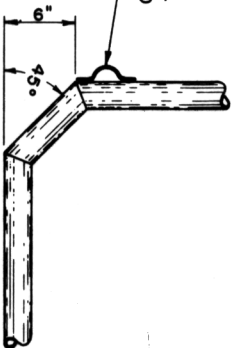
PERSPECTIVE



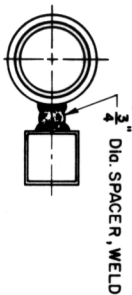
SLANT BAR

□

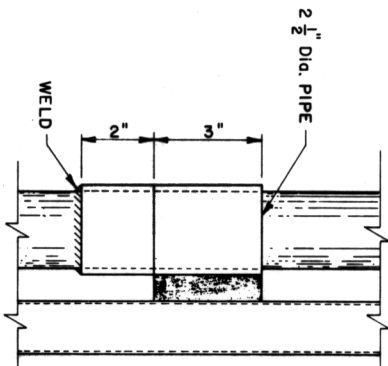
"TOWING EYE" 1/2" Dia.  
STEEL BAR, WELD TO  
PIPE FRAME



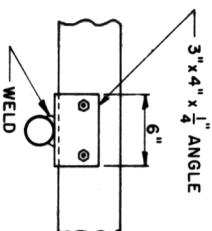
DETAIL "A"



3/4" Dia. SPACER, WELD



HINGE DETAIL "C"



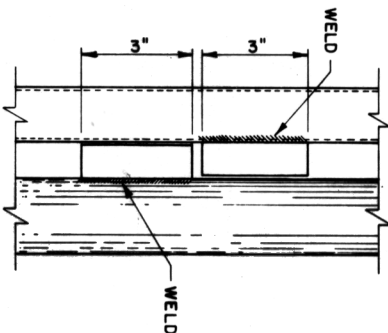
3" x 4" x 1/4" ANGLE

DETAIL "B"

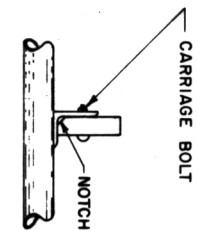


3/4" Dia. PIPE

SHIM AS REQ'D FOR ALIGNMENT



LATCH DETAIL "D"



CARRIAGE BOLT

NOTCH

MATERIAL	REQ'D
1 1/2" x 14 Ga. Square Tubing	200'
2" Dia. Pipe	80'
Corrugated Metal Roofing, 10' Sheets	7
20 Ga. Sheet Metal	1' x 16'
20 Ga. Sheet Metal	1'-6" x 24'
3" x 4" x 1/4" Angle	12"
2" x 2" x 3/8" Angle	14"
2 1/2" Dia. Pipe	8"
1/2" x 3 3/8" Carriage Bolt	4
1/2" x 2 1/2" Carriage Bolt	12
2" x 6" x 1/4"	1
2" x 4" x 1/4"	2
2" x 4" x 6"	1
3/4" Dia. Steel Bar (Latch Pins & Spacers)	As Req'd

COOPERATIVE EXTENSION WORK IN  
AGRICULTURE AND HOME ECONOMICS

COVERED FEEDER  
FOR ROUND BALES

OK. '76 6245 SHEET 1 OF 2

BASED ON: OKLA. STATE UNIV. PLAN NO. OK-724-30