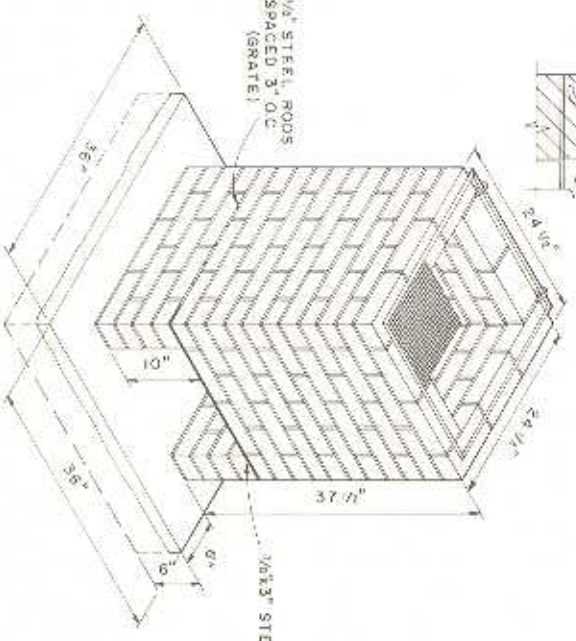
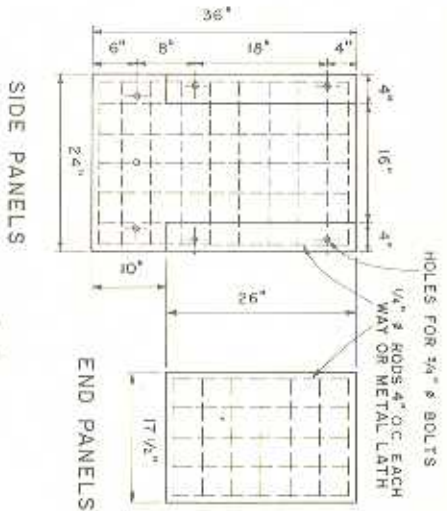


CONCRETE TRASH BURNER
NOT TO SCALE

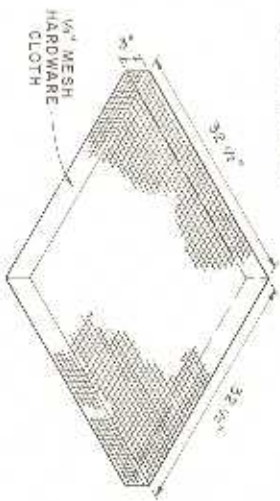


BRICK TRASH BURNER



SIDE PANELS

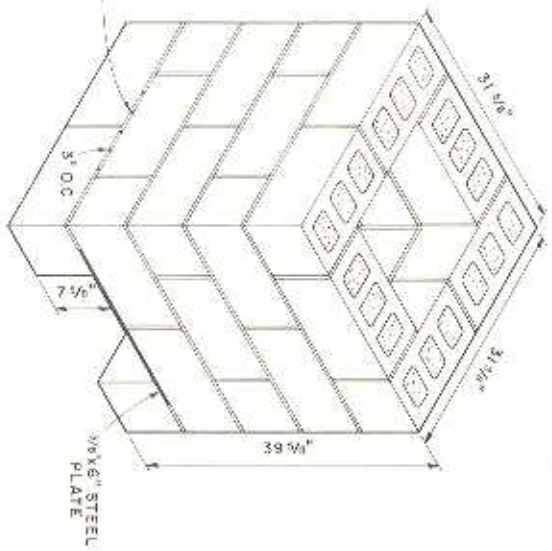
END PANELS



REMOVABLE COVER

BILL OF MATERIALS

- 28 CONCRETE BLOCKS 7 7/8" X 7 7/8" X 15 1/8"
 - 1 SACK MASONRY CEMENT
 - 3 CU. FT. SAND
 - 1 PC. 1/2" X 3/4" X 24" STEEL PLATE
 - 5 PCS. 1/4" X 8 STEEL RODS 24" LG. (GRATE)
 - 1 PC. 1/4" MESH HARDWARE CLOTH 39" SQUARE
- NOTE:
3/8" MORTAR JOINTS
VOIDS IN TOP COURSE OF BLOCK TO BE FILLED WITH MORTAR.



BLOCK TRASH BURNER

BILL OF MATERIALS

- 1 SACK PORTLAND CEMENT
 - 2 CU. FT. SAND
 - 3 CU. FT. GRAVEL
 - 6 GALLONS WATER
- FOR TRASH BURNER:
- 150 COMMON RED BRICK (NEW OR USED)
 - 1 SACK MASONRY CEMENT
 - 3 CU. FT. SAND
 - 1 PC. 1/2" X 3/4" X 24" STEEL PLATE 24" LG.
 - 5 PCS. 1/4" X 8 STEEL ROD 24" LG. (GRATE)
 - 1 PC. 1/4" X 8 STEEL ROD 9" LG.
 - 1 PC. 1/4" MESH HARDWARE CLOTH 24" SQUARE
- HARDWARE:

- BILL OF MATERIALS**
- CONCRETE: 1:2:3 MIX
 - 1 SACK OF CEMENT
 - 2 CU. FT. OF SAND
 - 3 CU. FT. OF GRAVEL
 - 14 - 1/4" RODS 34" LG.
 - 10 - 1/4" RODS 24" LG.
 - 20 - 1/4" RODS 22" LG.
 - 14 - 1/4" RODS 15 1/2" LG.
 - 7 - 1/4" X 22 1/2" LG. (WITH NUTS & 2" WASHERS)
 - 1 - PIECE OF EXPANDED METAL 16 1/2"
- NOTE:
THE CONCRETE SHOULD BE MIXED: 1 PART PORTLAND CEMENT, 2 PARTS SAND AND 3 PARTS GRAVEL. IF THE GRAVEL IS OF SUCH A CHARACTER AS TO BE DISINTEGRATED BY HEAT, IT WILL BE BEST TO USE BROKEN BRICK OR TERRA COTTA IN PARTICLES FROM 1/2" TO 1/2" IN SIZE.
AFTER THE SLABS HAVE BEEN MADE THEY SHOULD BE COVERED AS SOON AS THERE IS NO DANGER OF MARRING THEM, WITH MOIST STRAW, SACKS, OR EARTH AND LEFT FOR 2 TO 3 WEEKS TO THOROUGHLY AND SLOWLY HARDEN.



BASED ON: USDA PLAN NO. 5164
TEXAS A&M UNIV. PLAN NO. 209

COOPERATIVE EXTENSION WORK IN AGRICULTURE AND HOME ECONOMICS			
UNIVERSITY OF TEXAS SYSTEM, DALLAS, TEXAS			
TRASH BURNERS			
3 TYPES			
3324	76	6260	SHEET 1 OF 1
TEXAS			