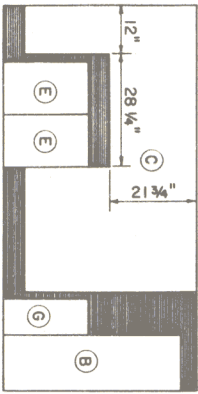


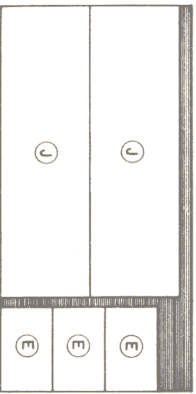
CUTTING DIAGRAMS



3/4" x 4'-0" x 8'-0" EXTERIOR A-C

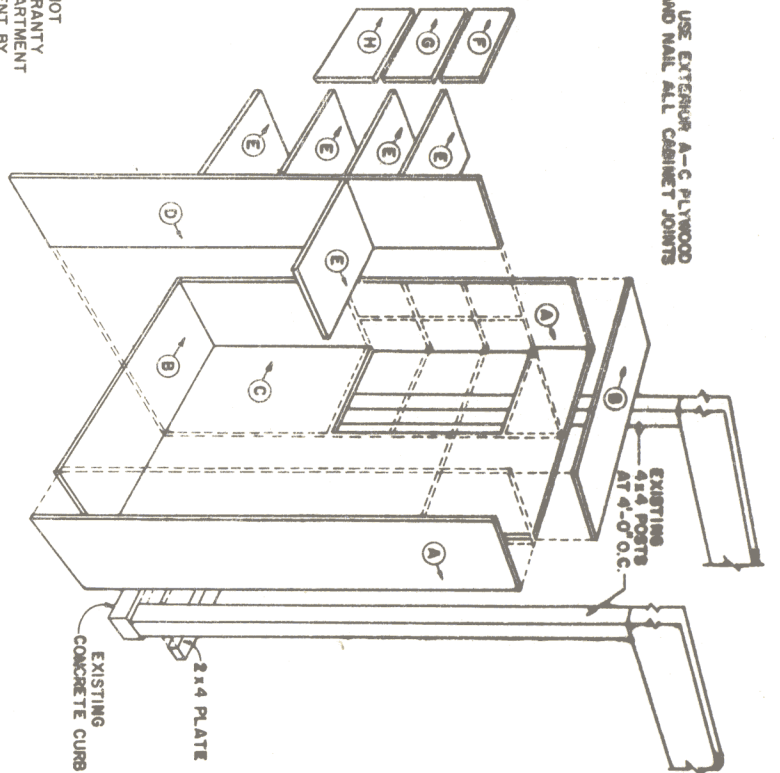


3/4" x 4'-0" x 8'-0" EXTERIOR A-C



3/4" x 4'-0" x 8'-0" EXTERIOR A-C

NOTE: USE EXTERIOR A-C PLYWOOD GLUE AND NAIL ALL CABINET JOINTS



PERSPECTIVE

NOTE: DOORS J SHOWN IN ELEVATION

NOTE: MENTION OF A TRADE NAME DOES NOT CONSTITUTE A GUARANTEE OR WARRANTY OF THE PRODUCT BY THE U.S. DEPARTMENT OF AGRICULTURE OR AN ENDORSEMENT BY THE DEPARTMENT OVER OTHER PRODUCTS NOT MENTIONED.

PLYWOOD PARTS

CODE	NO. REQD.	SIZE	PART IDENTIFICATION
(A)	2	14" x 71 1/2"	SIDE
(B)	2	14" x 44 1/4"	TOP AND BOTTOM
(C)	1	42 3/4" x 71 1/2"	BACK
(D)	1	13 1/4" x 71 1/2"	DIVIDER
(E)	5	13 1/4" x 21"	SHELF
(F)	1	7 1/4" x 21"	SHELF DIVIDER
(G)	1	9 1/4" x 21"	SHELF DIVIDER
(H)	1	10 1/4" x 21"	SHELF DIVIDER
(J)	2	22 1/8" x 73"	DOOR



COOPERATIVE EXTENSION WORK IN AGRICULTURE AND HOME ECONOMICS

UNITED STATES DEPARTMENT OF AGRICULTURE COOPERATING AND

LAWN TOOL STORAGE

APA '77 6283 SHEET 1 OF 1