

NOTES:

LENGTH OF BUILDING MAY BE VARIED IN UNITS OF 16 FEET.

ALL POSTS AND WOOD IN CONTACT WITH THE GROUND TO BE PRESSURE-TREATED WITH PRESERVATIVE TO A RETENTION OF 6 LBS. PER CU. FT.

FRAMING AROUND FAN SHOULD BE CUT TO FIT SIZE OF FAN USED.

THE NESTS ARE BUILT IN SECTIONS SO THEY CAN BE REMOVED AND THOROUGHLY CLEANED BETWEEN FLOCKS.

EQUIP WITH AN ADEQUATE LIGHTING PROTECTION SYSTEM WHERE NEEDED.

PANEL CONSTRUCTION-
2" x 4" FRAME COVERED ON BOTH SIDES WITH 3/4" EXTERIOR PLYWOOD. INSIDE OF PANEL TO HAVE A 4 TO 6 MIL POLYETHYLENE VAPOR BARRIER NEXT TO THE INSULATION.

VENTILATION REQUIREMENTS-

FOR WINTER OPERATION-
FOR LUNN BOTH SINGLE POLE SWITCHES "ON" SET NO. 1 THERMOSTAT AT 40°-45° AND NO. 2 THERMOSTAT AT 40°-45° ADJUST RECYCLING TO OPERATE FANS ABOUT 1/2 OF TIME WHEN NO. 1 THERMOSTAT IS OFF.

FOR SUMMER OPERATION-
TURN NO. 2 SINGLE POLE SWITCH TO "OFF" POSITION TO STOP MOTOR IN TIMER. SET NO. 1 THERMOSTAT AT ABOUT 80°.

USE A SET OF THE CONTROLS (SEE DIAGRAM BELOW) FOR EACH PAIR OF FANS.

FAN CAPACITY, 4.5 CFM PER BIRD.

WIRING DIAGRAM FOR FANS SHOWN BELOW.

WIRING REQUIREMENTS-

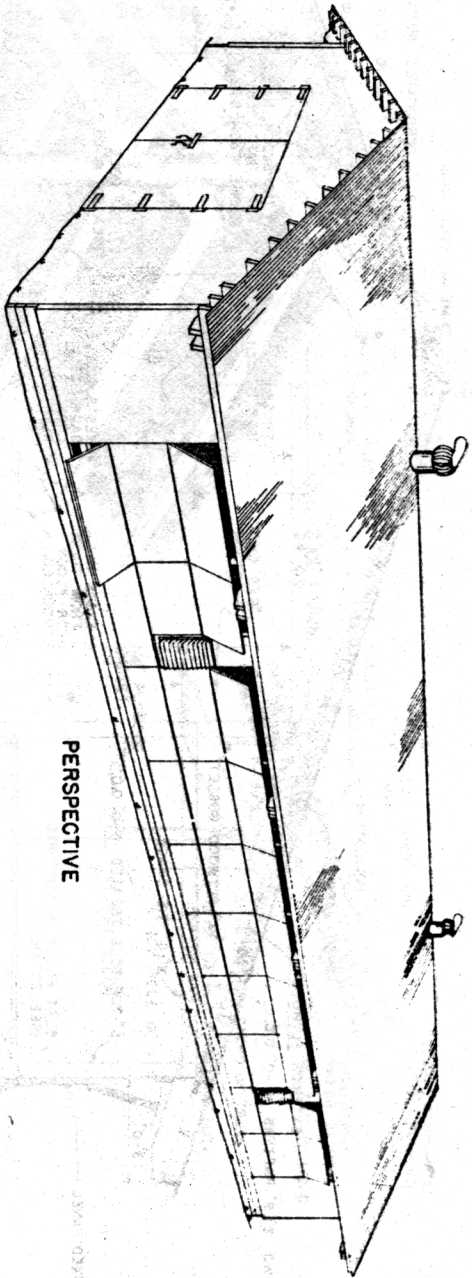
100 FT. CIRCUIT WITH 60 W. LAMP EACH 16 FT.-360 W.-NO. 12 WIRE.

150 FT. CIRCUIT WITH 60 W. LAMP EACH 16 FT.-540 W.-NO. 12 WIRE.

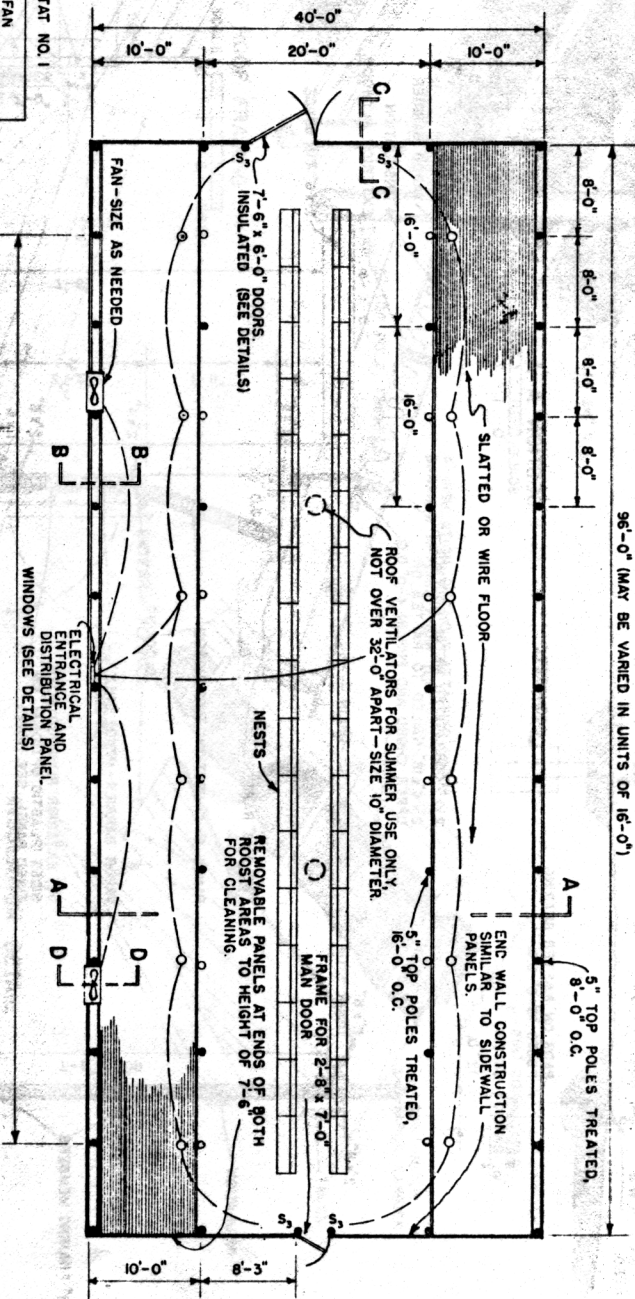
200 FT. CIRCUIT WITH 60 W. LAMP EACH 16 FT.-720 W.-NO. 10 WIRE.

FOR CIRCUITS OVER 200 FT. CONSULT ENGINEER OR POWER SUPPLIER.

LOCATE ENTRANCE EQUIPMENT AND DISTRIBUTION PANEL AT MIDDLE OF THE BUILDING WHEN LENGTH EXCEEDS 200 FT.



96'-0" (MAY BE VARIED IN UNITS OF 16'-0")



WIRING DIAGRAM FOR CONTROLLING FANS.