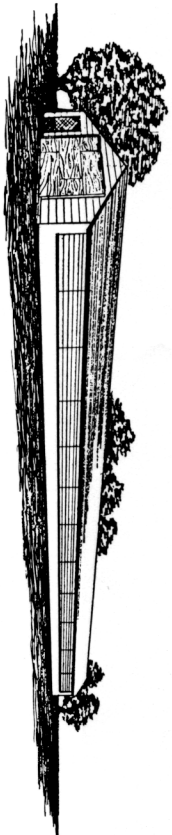
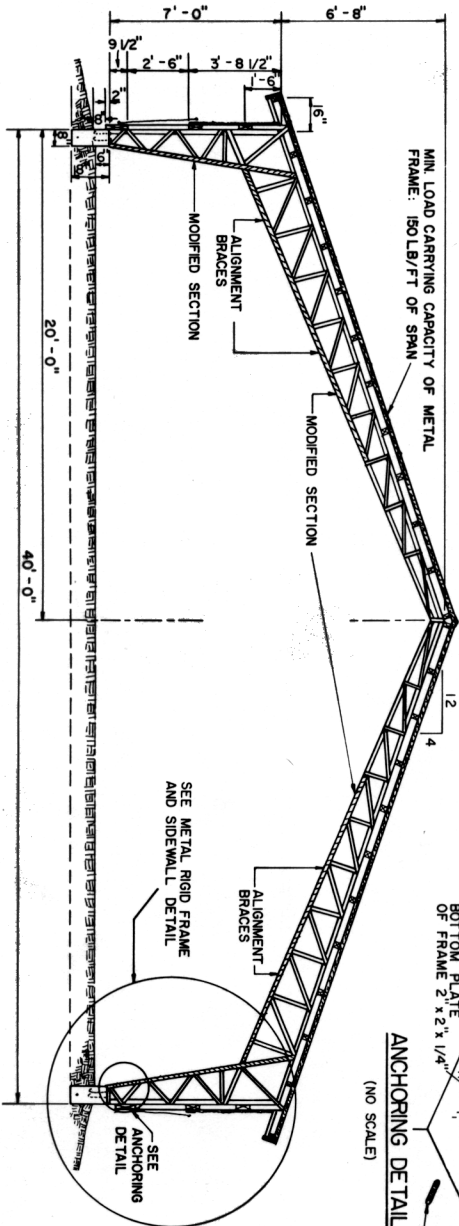


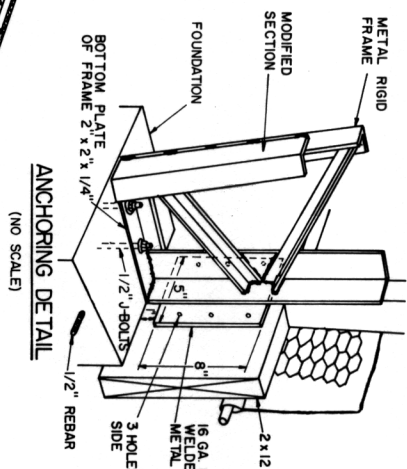
FLOOR PLAN



BROILER HOUSE WITH AUTOMATIC CURTAINS AND FOGGING



SECTION A-A



ANCHORING DETAIL

NOTE: THIS PLAN DEPICTS THE USE OF A STEEL BUILDING FOR POULTRY HOUSING. IN PRACTICE, THE DETAILS AND ERECTION OF THE STEEL FRAMING SYSTEM WILL VARY AMONG MANUFACTURERS. THIS PLAN SHOULD AID IN VISUALIZING DIFFERENCES BETWEEN STEEL AND THE MORE COMMONLY USED WOOD BUILDINGS. WHEN USING A STEEL FRAME SYSTEM, ORDER A STRUCTURE THAT WILL WITHSTAND LOCAL SNOW AND WIND LOADS. ANCHOR ACCORDING TO MANUFACTURER'S SPECIFICATIONS. SIZE OF PURLINS WILL DEPEND ON TRUSS SPACING AND LOCAL SNOW LOADS - ILLUSTRATED SPACING AND SIZES FOR 30 LBS/FT<sup>2</sup> TOTAL ROOF LOAD.

COOPERATIVE EXTENSION SERVICE  
AGRICULTURE AND HOME ECONOMICS

UNITED STATES DEPARTMENT OF AGRICULTURE COOPERATING  
AND

STEEL FRAMED BROILER HOUSE WITH  
AUTOMATIC CURTAINS, FOGGERS & CEILING FAN

ARK '87 6390 SHEET 1 OF 6