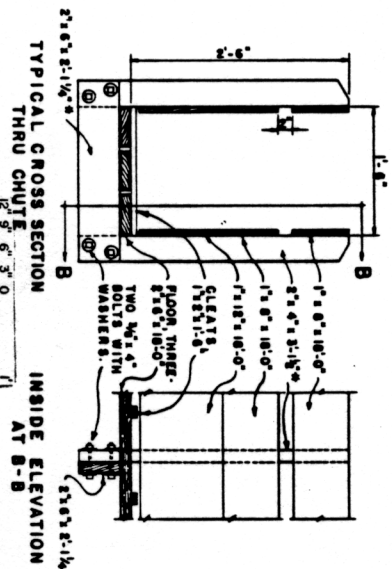


CONCRETE COUNTER WEIGHTS
ABOUT 16-18" TO CAST
AROUND EYE-BOLT (SOME
ADJUSTMENT IN SIZE MAY BE
REQUIRED DUE TO VARIATIONS
IN WEIGHT OF LUMBER USED
FOR CHUTE.)

ISOMETRIC VIEW
OF COMPLETED CHUTE



TYPICAL CROSS SECTION
THRU CHUTE

INSIDE ELEVATION
AT B-B

* DIMENSIONS BASED ON USE OF DRESSED LUMBER.

3/4" DIAMETER FLEXIBLE
WIRE ROPE FOR COUNTERWEIGHT
CHUTE IN RAISED
POSITION FOR
LOADING DOUBLE
DECK TRUCKS

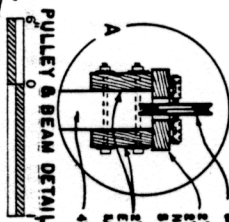
GRADE

TWO 3/4" x 6" BOLTS
WITH WASHERS AT
EACH POST.
4" x 6" 16'-0" PRESSURE
TREATED POSTS

4" x 6" 16'-0" TO
HOLD END OF
CHUTE AT TRUCK
BED HEIGHT.

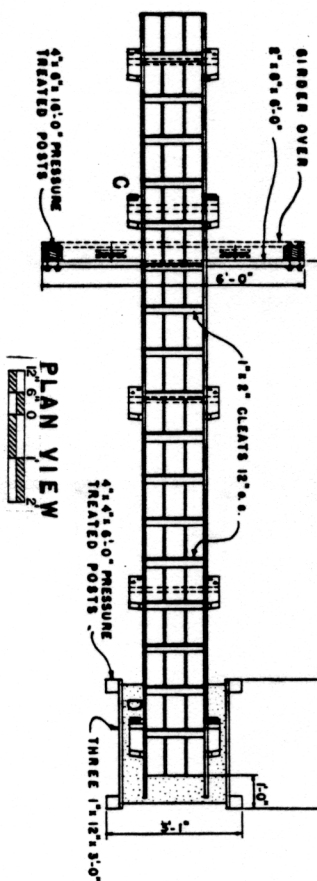
4" x 6" 16'-0" PRESSURE
TREATED POSTS.

6" CONCRETE
SLAB



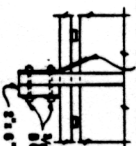
3/4" DIAMETER PULLEY
& FITTINGS.
3/4" x 6"-0" FASTENED TO
BEAM WITH 3/4"
SLOT & FOR PULLEYS.
3/4" x 6"-0" BOLTED TO
EACH POST WITH TWO
3/4" x 6" BOLTS & WASHERS.
4" x 6" 16'-0" TREATED POST

ELEVATION

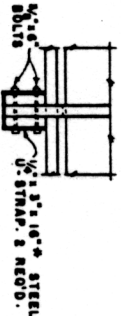


PLAN VIEW

3/4" x 1" x 10" STEEL STRAP FOR
ANCHORING WIRE ROPE. 2 REQ'D.
DRILL TO SUIT FRAMING BOLTS.



DETAIL AT C



DETAIL AT D

BASED ON CALIFORNIA PLAN B-78-1

COOPERATIVE EXTENSION WORK IN
AGRICULTURE AND HOME ECONOMICS

LOADING CHUTE
FOR SHEEP

USDA '95 EX. 5810 SHEET 1 OF 1