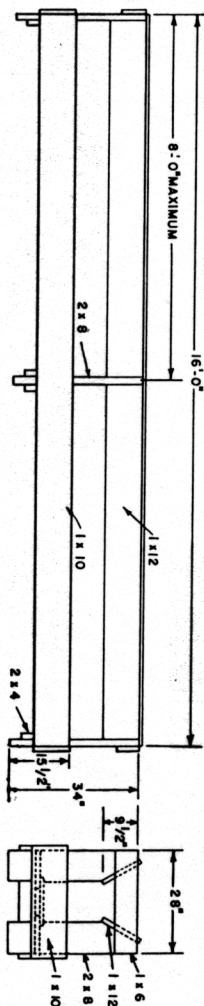


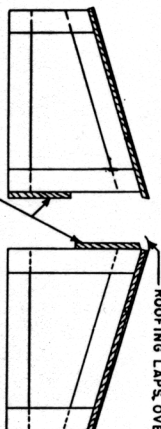
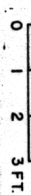
PLAN OF FEEDER



FRONT ELEVATION

END ELEVATION

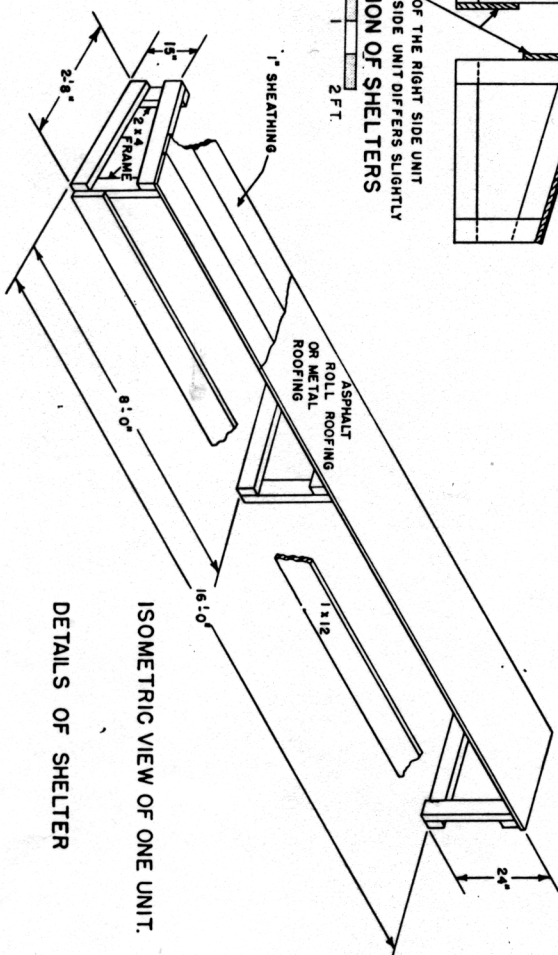
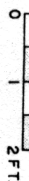
DETAILS OF FEEDER



ROOFING LAPS OVER EDGE LEFT SIDE UNIT

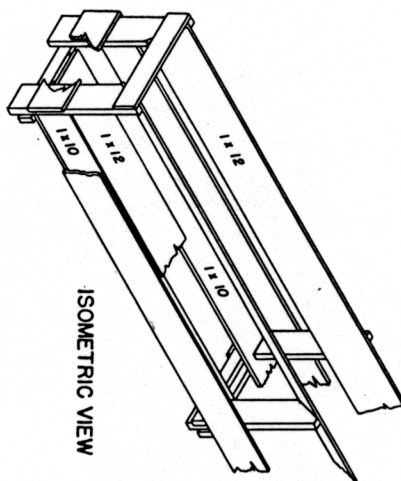
NOTE: CONSTRUCTION OF THE RIGHT SIDE UNIT AND THE LEFT SIDE UNIT DIFFERS SLIGHTLY

CROSS SECTION OF SHELTERS



ISOMETRIC VIEW OF ONE UNIT.

DETAILS OF SHELTER



ISOMETRIC VIEW

NOTE:

THIS FEEDER CAN BE MADE IN 12 AND 14 FOOT LENGTHS. THE SHORTER LENGTHS ARE MUCH STRONGER BECAUSE THE DISTANCE BETWEEN SUPPORTS IS LESS.

THIS FEEDER MAY BE USED AS A DIVIDER BETWEEN PENS BY ADDING A 1x6 BOARD IN THE CENTER TO PREVENT THE SHEEP FROM CRAWLING THROUGH.

DIMENSIONS OF MEMBERS SHOWN ARE BASED ON THE USE OF DRESSED LUMBER.

ALL WOOD IN CONTACT WITH THE GROUND TO BE TREATED WITH A NON-TOXIC PRESERVATIVE.

COOPERATIVE EXTENSION WORK IN  
AGRICULTURE AND HOME ECONOMICS  
DEPARTMENT OF AGRICULTURAL ENGINEERING  
UNIVERSITY OF MARYLAND

UNITED STATES DEPARTMENT OF AGRICULTURE COOPERATING

SHEEP EQUIPMENT

UTAH 80 EX. 5905 SHEET 1 OF 1