

Colorado Extension Advisory Council (CEAC) Members 2018



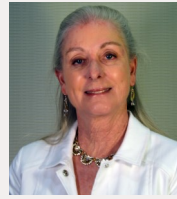
Steve Acquafresca

Peach Grower
Mesa County



Darius Allen

County Commissioner
Alamosa County



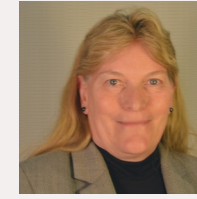
Susan Alvillar

Retired, Terra Energy
Garfield County



Robbie Baird LeValley

Delta County Administrator



Cindy Domenico

County Commissioner
Boulder County



Callie Hendrickson

White River & Douglas Creek
Conservation District



Mary Hodge

County Commissioner
Adams County



Don Nease

Univ. Colo. Anschutz Medical
Campus / Colo. Clinical &
Translational Sciences
Institute



Roger Partridge

County Commissioner
Douglas County



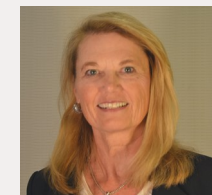
**Wendy Peters
Moschetti**

LiveWell Colorado



Julie Westendorff

County Commissioner
La Plata County



Jean White

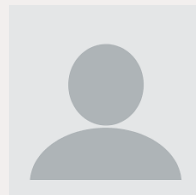
Former State Senator
Routt County

Ex-Officio Members



Allison Gault

Green Industries of
Colorado



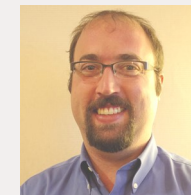
Pat Gannon

CSU Online



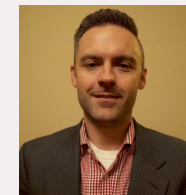
Eugene Kelly

CSU Agriculture
Experiment Station



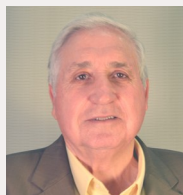
Michael Macklin

Colo. Community
College System



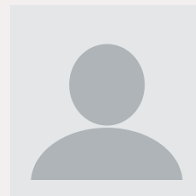
Shawn Martini

Colorado
Farm Bureau



Dale McCall

Rocky Mountain
Farmers Union



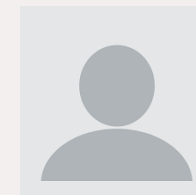
Susie Reiff

Colo. Assn. for Family &
Community Education



Mark Sponsler

Colorado Corn



Jenn Yezak

Colo. Dept. of Agriculture

Colorado Extension Advisory Council (CEAC) - 2018

April 2018

Term Expires 12/2018	Term Expires 12/2019	Term Expires 12/2020
<p>*White, Jean (Routt) Former State Senator (Appointed 2013; renew 1/2016)</p>	<p>Nease, Don (Arapahoe) Director, Shared Networks of Collaborating Ambulatory Practices and Partners (SNOCAP) (Appointed 5/2016 end 12/2016 unfulfilled; renew 1/2017)</p>	<p>*Peters Moschetti, Wendy (Boulder) LiveWell Colorado (Appointed 10/2014 unfulfilled; renew 1/2015; renew 1/2018)</p>
<p>*Alvillar, Susan (Garfield) Community Affairs Representative Retired from Terra Energy Partners (Appointed 2013; renew 1/2016)</p>	<p>Darius Allen (Alamosa) Alamosa County Commissioner (Appointed 2017)</p>	<p>*Baird LeValley, Robbie (Delta) Delta County Administrator (Appointed 10/2014 unfulfilled; renew 1/2015; renew 1/2018)</p>
<p>#Hendrickson, Callie (Mesa) Executive Director, White River and Douglas Creek Conservation District (Appointed 5/2016 end 12/18 unfulfilled)</p>	<p>Roger Partridge (Douglas) Douglas County Commissioner (Appointed 2017)</p>	<p>Domenico, Cindy (Boulder) County Commissioner (Appointed 2/2015 end 12/17 unfulfilled; renew 1/18)</p>
<p>Acquafresca, Steven (Mesa) Peach grower (Appointed 1/2015)</p>	<p>Mary Hodge (Adams) Adams County Commissioner (Appointed 2017)</p>	<p>Westendorff, Julie (La Plata) County Commissioner (Appointed 2/2015 end 12/17 unfulfilled; renew 1/18)</p>

* - Serving second term, not eligible for reappointment.

- Completing unfulfilled term, eligible for two additional 3-year terms

Ex-Officio Members		
<p>Gault, Allison Green Industries of Colorado</p>	<p>Gannon, Pat CSU Online</p>	<p>Kelly, Eugene CSU College of Agricultural Sciences</p>
<p>McCall, Dale Rocky Mountain Farmers Union</p>	<p>Macklin, Michael Colorado Community College System</p>	<p>Martini, Shawn Colorado Farm Bureau</p>
<p>Reiff, Susie Colorado Association for Family & Community Education</p>	<p>Sponsler, Mark Colorado Corn</p>	<p>Yezak, Jennifer Colorado Department of Agriculture</p>