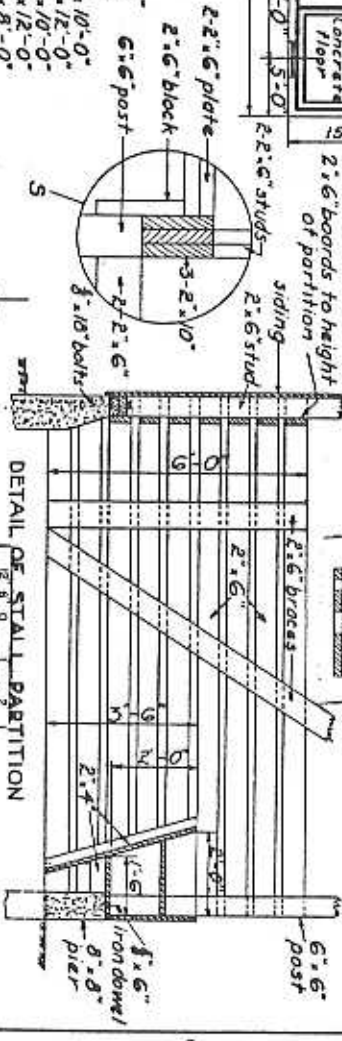
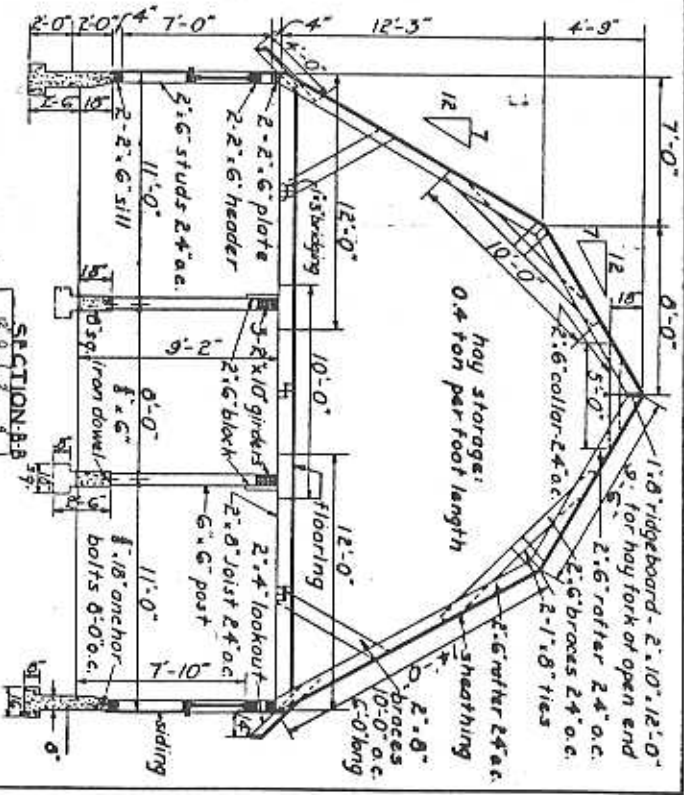


BILL OF MATERIALS

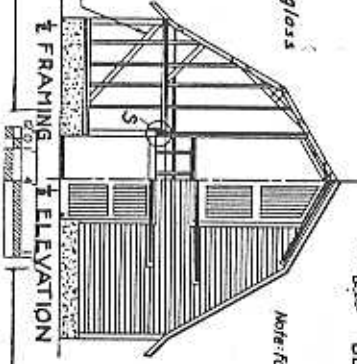
Concrete: 25 cu yds. 1:2:4 mix
 cement: 150 bags
 sand: 14.5 cu yds.
 stone: 21.0 cu yds.

Lumber:
 girders: 42 per. 2x10x10-0
 sills: 34 " 2x6x12-0
 studs: 74 " 2x6x12-0
 plates: 28 " 2x6x10-0
 posts: 8 " 2x6x10-0
 rafters: 16 " 2x6x10-0
 lookouts: 24 " 2x6x10-0
 corner bds: 4 " 1x4x16-0
 stall part: 72 " 2x6x12-0
 braces: 7 " 2x6x12-0
 " 19 " 2x6x12-0
 collars: 18 " 2x6x12-0
 ties: 24 " 1x8x12-0
 joist: 36 " 2x8x10-0
 ridsboard: 6 " 1x8x12-0
 Cross bracing: 2x10x12-0

manger bds. 540 bd ft.
 guard bds. 1120 bd ft.
 trim bds. 285 lin. ft.
 250 " 1x6
 uprights: 12 per. 2x4x10-0
 manger braces: 15 " 2x4x12-0
 studs: 12 " 2x4x10-0
 gates: 10 " 1x6x12-0
 54 " 1x6x8-0
 flooring: 2630 sq. ft.
 siding: 2200 sq. ft.
 windows: 4 single sash 6 lvs. 10x12 glass
 doors: 1 - 3-0x6-0
 " 1 - 3-0x6-0
 hay doors: 2 - 4-0x8-0
 sheathing: 4200 bd. ft.
 roofing: 40 sq. yds.
 anchor bolts: 24 " 3x10
 iron dowels: 12 " 3x10
 T & G ceiling: 600 sq. ft.
 Also nails, paint, hardware, etc.



Note: For large horses increase size of stalls and use corner mangers.



PLAN

COOPERATIVE EXTENSION WORK IN
 AGRICULTURE AND HOME ECONOMICS

U. S. DEPT. OF AGRICULTURE GOVERNMENT
 AND
 HORSE BARN

VA. EX-3563 SHEET 1 OF 1