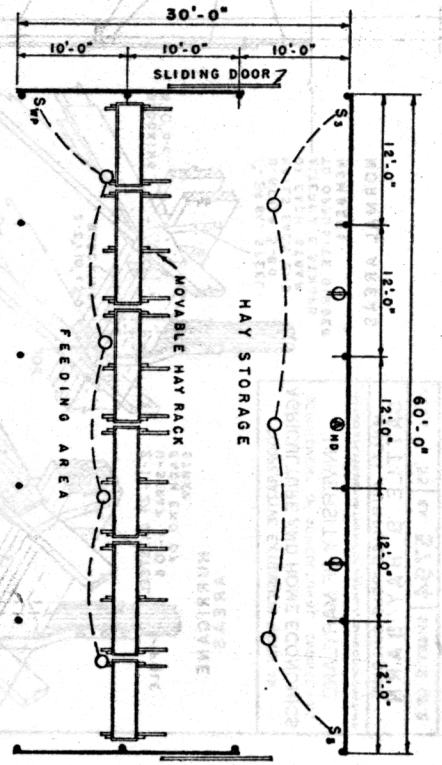
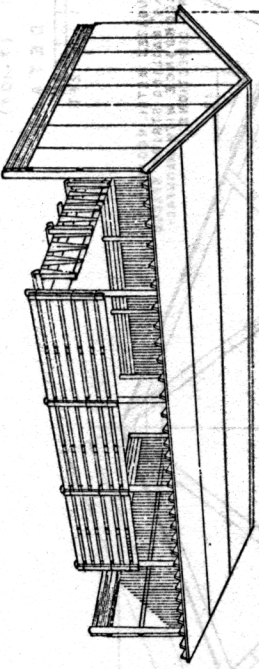


PLAN NO. 1
 0 4 8 12FT

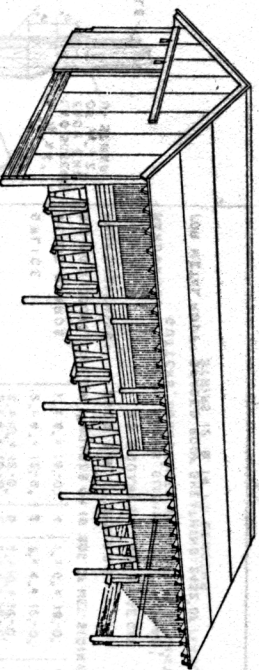
- WIRING LEGEND
- LIGHT OUTLET
 - ⊗ DUPLEX OUTLET
 - ⊙ HAY DRYER
 - ⊙ SINGLE POLE SWITCH
 - S1 3 WAY SWITCH
 - Swp WEATHERPROOF SWITCH



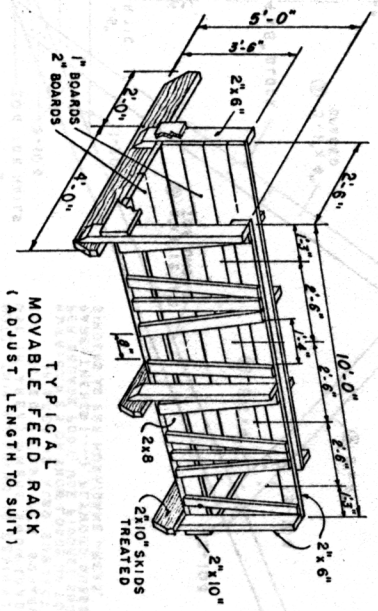
PLAN NO. 2
 0 4 8 12FT



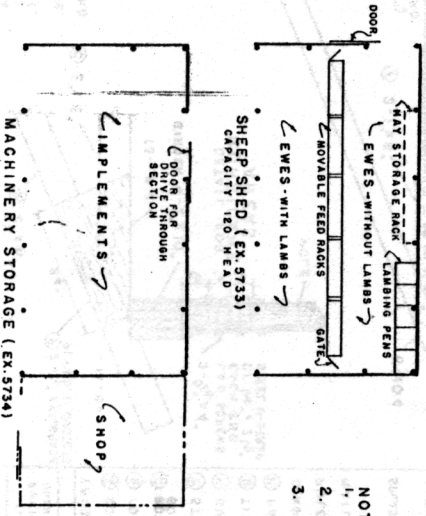
PERSPECTIVE VIEW OF PLAN NO. 1



PERSPECTIVE VIEW OF PLAN NO. 2



TYPICAL FEED RACK
 (ADJUST LENGTH TO SUIT)



- NOTE:-
1. CAPACITY: 24 TO 32 HEAD
 2. LENGTH OF BUILDING MAY BE VARIED IN 12 FT. UNITS.
 3. USE OF THE BUILDING AS SHEEP OR MACHINERY SHELTER IS ILLUSTRATED BY SMALL PLANS AT LEFT. COMPLETE SET OF DIMENSIONS OF THESE TYPES OF BUILDINGS MAY BE OBTAINED - WHEN ORDERING USE THE PLAN NUMBER INDICATED.

BASED ON VIRGINIA PLAN NO. K 125

COOPERATIVE EXTENSION WORK IN
 AGRICULTURE AND HOME ECONOMICS
 DEPARTMENT OF AGRICULTURAL ENGINEERING
 UNIVERSITY OF MARYLAND
 UNITED STATES DEPARTMENT OF AGRICULTURE COOPERATING

MULTI PURPOSE POLE BUILDING
 CATTLE & HAY BARN

USA '55 EX. 5794 SHEET 1 OF 2