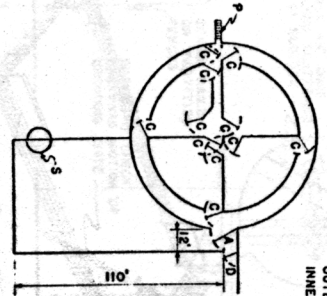
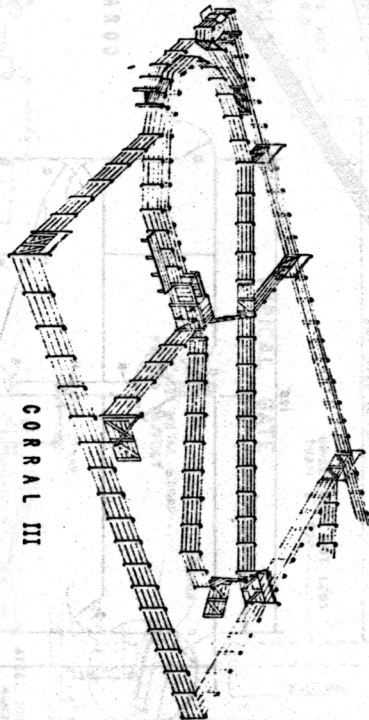
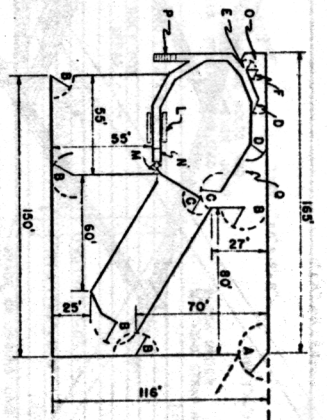


CORRAL II

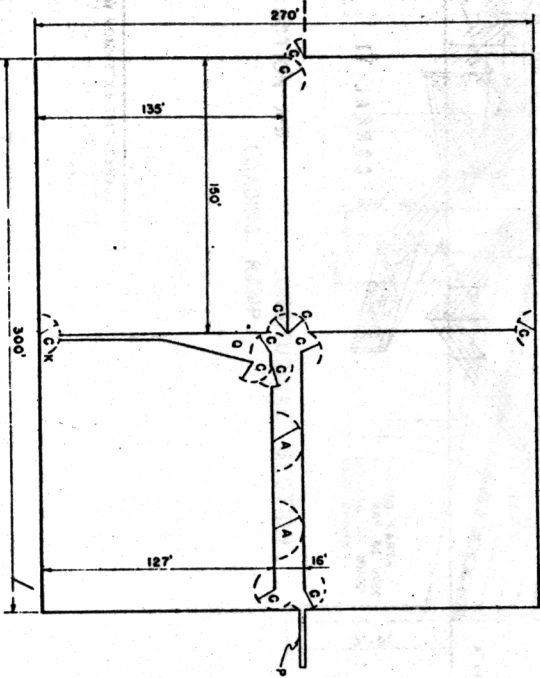


OUTER RING 100' DIA.
INNER RING 80' DIA.

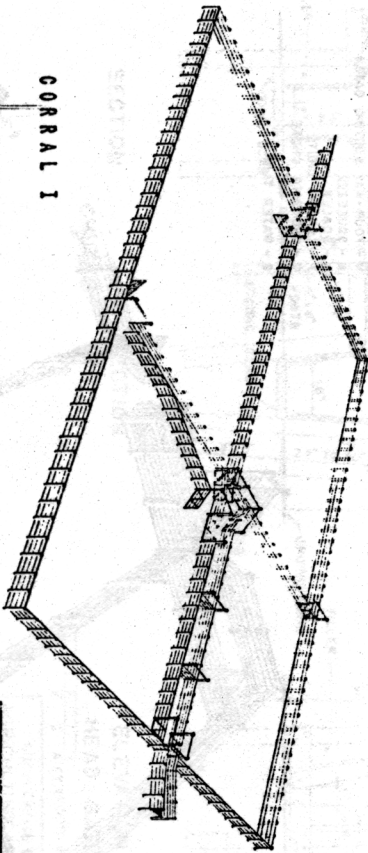
- A-16'-0" GATE
- B-12'-0"
- C-10'-0"
- D-8'-0"
- E-6'-0"
- F-5'-0"
- G-4'-0"
- K-CUTTING GATE
- L-PLATFORM
- M-FOUR-WAY SORTING GATES
- N-SQUEEZE
- O-SCALES
- P-LOADING CHUTE
- Q-CROWDING CHUTE
- R-HEAD GATE
- S-WATER TANK



CORRAL III



CORRAL I



COOPERATIVE EXTENSION WORK IN
AGRICULTURE AND HOME ECONOMICS
DEPARTMENT OF AGRICULTURAL ENGINEERING
UNIVERSITY OF MARYLAND

AND
UNITED STATES DEPARTMENT OF AGRICULTURE, BUREAU OF RANGING

SIX CORRALS
FOR BEEF CATTLE

USDA '57 EX 5835 SHEET 1 OF 3