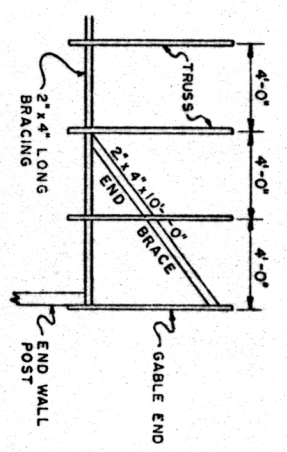
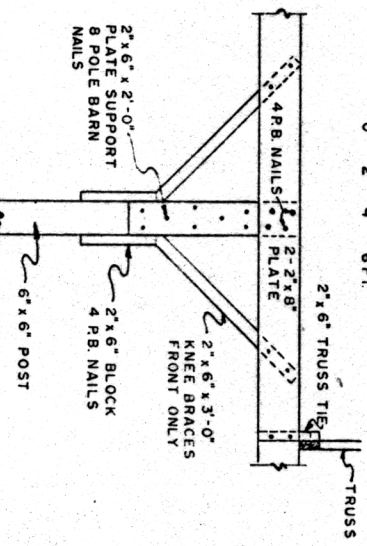


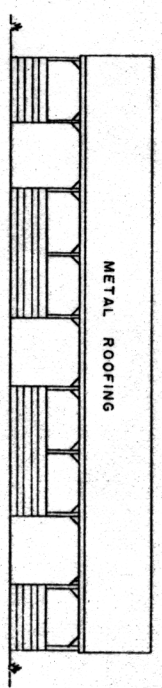
COMMERCIALLY FABRICATED TRUSSES
 SPAN 40'-0", MAXIMUM SPACING
 4'-0" O.C. FOR DEAD LOAD + R.S.F. LIVE LOAD



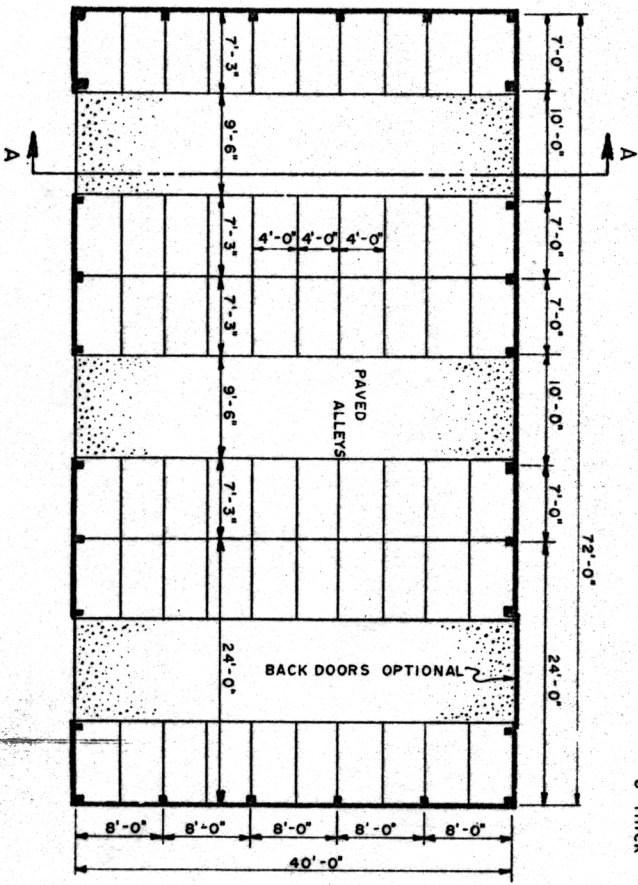
TRUSS BRACING DETAIL



POST-PLATE DETAIL



FRONT ELEVATION



FLOOR PLAN

POSTS AND OTHER WOOD IN CONTACT WITH EARTH OR MANURE SHOULD BE PRESSURE-TREATED WITH PRESERVATIVE.

COOPERATIVE EXTENSION WORK IN AGRICULTURE AND HOME ECONOMICS
 DEPARTMENT OF AGRICULTURAL ENGINEERING
 UNIVERSITY OF MARYLAND
 AND
 UNITED STATES DEPARTMENT OF AGRICULTURE COOPERATING

FREE-STALL BARN
 FOR 60 COWS

DEL. '67 EX. 6030 SHEET 1 OF 1