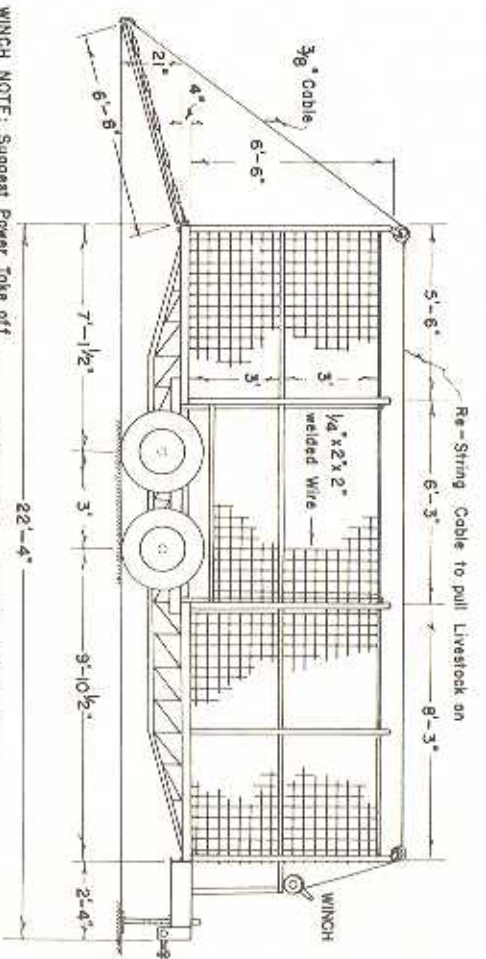
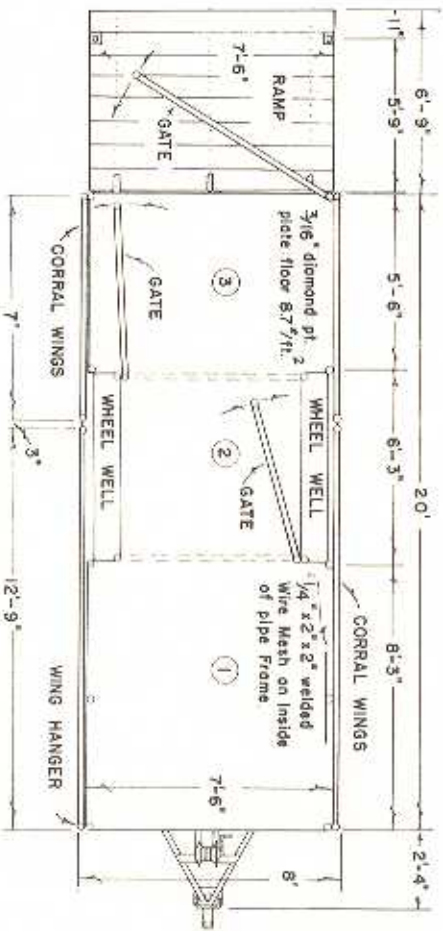


HITCH NOTE: A Gooose-neck or heavy duty Ball Hitch maybe preferred — check Tractor & Truck Hitch Dimensions.



WINCH NOTE: Suggest Power Take off or 12-Volt Motor powered WINCH.



- ① 6 Cows
  - ② 6 Calves
  - ③ 2 Saddle Horses
- ① + ② + ③ 25 Calves (400 #)

ORIGINAL DESIGN: FRED VOORHEES,  
YERBA BUENA RANCHO, NOGALES, ARIZONA.

COOPERATIVE EXTENSION WORK IN AGRICULTURE AND HOME ECONOMICS DEPARTMENT OF AGRICULTURAL ENGINEERING UNIVERSITY OF MARYLAND AND UNITED STATES DEPARTMENT OF AGRICULTURE COOPERATING			
<b>PORTABLE CORRAL TRANSPORT</b>			
ARL.	68	EX 6041	SHEET 1 OF 3