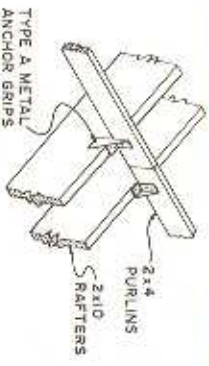
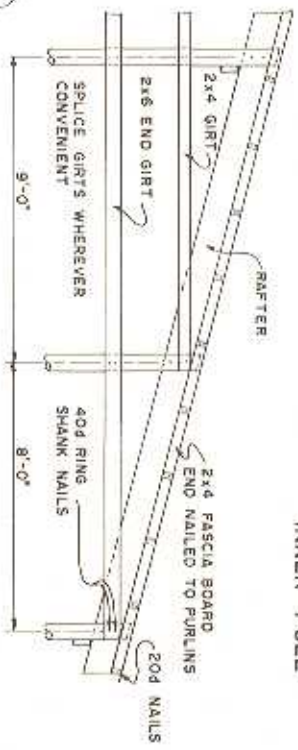


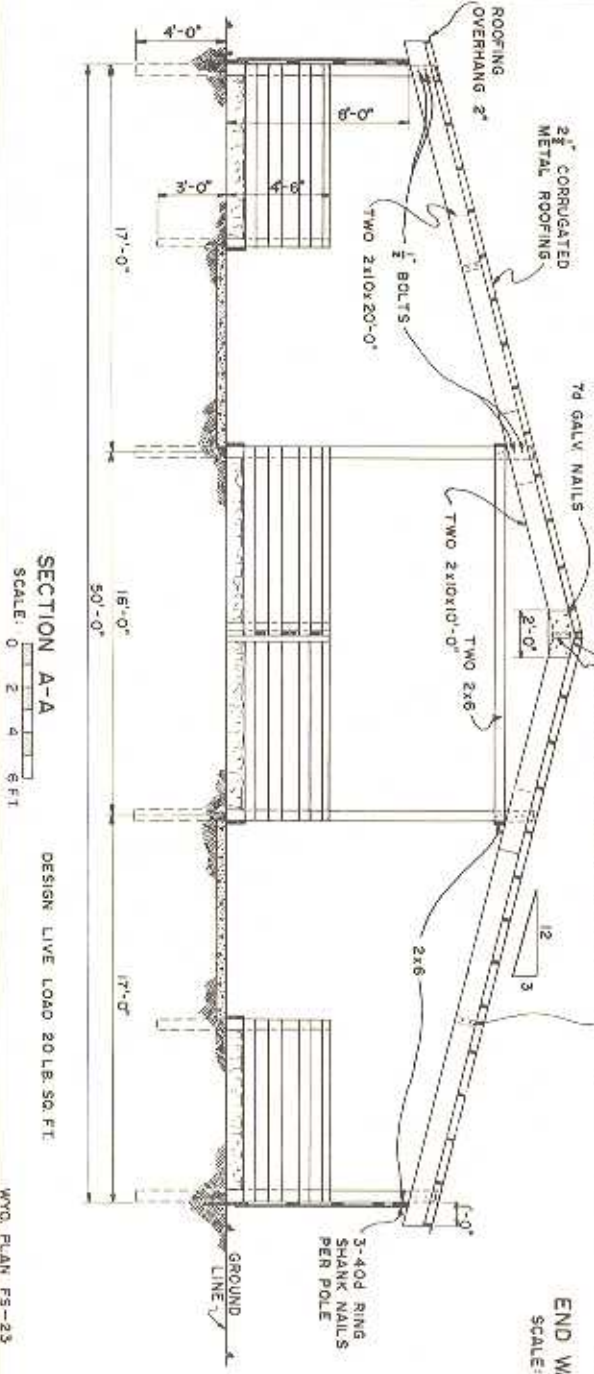
PURLIN TIE AT POLES



RAFTER ATTACHMENT AT INNER POLE



- NOTE:**
1. USE STANDARD OR BETTER GRADE DOUGLAS FIR FOR RAFTERS, NATIVE PINE OR FIR FOR PURLINS AND GIRTS.
 2. FOR ROOF, ORDER ROOFING MATERIAL SO THAT LAPS ARE OVER PURLINS—ALLOW AT LEAST 6" OVERLAP AT ENDS OF SHEETS.
 3. SPACING OF PURLINS NOT OVER 24"



DESIGN LIVE LOAD 20 LB. SQ. FT.

WYO. PLAN FS-25

COOPERATIVE EXTENSION WORK IN AGRICULTURE AND HOME ECONOMICS DEPARTMENT OF AGRICULTURAL ENGINEERING UNIVERSITY OF MARYLAND			
PUBLISHED BY THE UNIVERSITY OF MARYLAND, COLLEGE PARK, MARYLAND			
WYO.	'68	EX. 6050	SHEET 1 OF 1