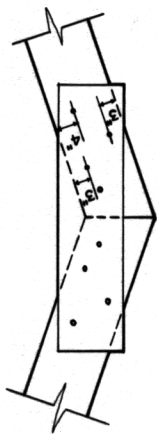
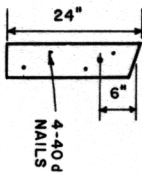


2x12x4-0" TIES ON BOTH SIDES OF RAFTERS BOLTED TOGETHER WITH 3/4"x6 1/2" MACHINE BOLTS WITH WASHERS



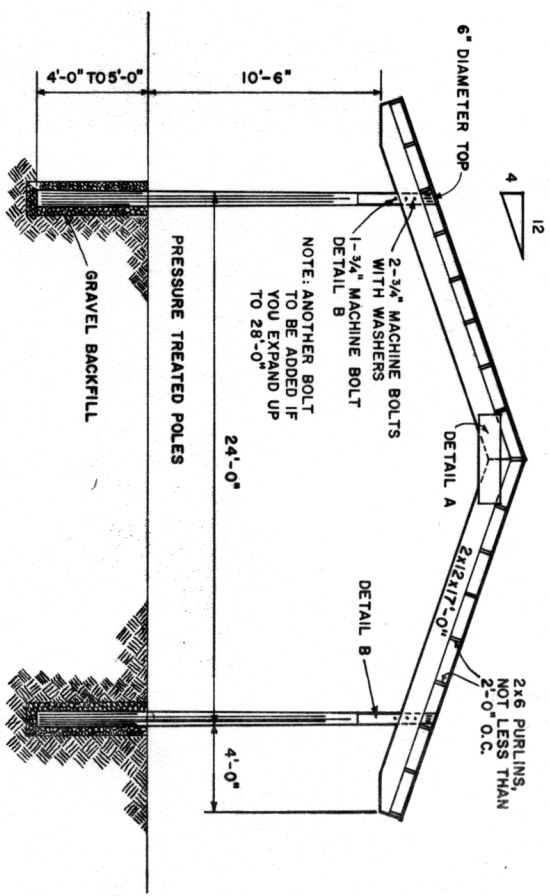
DETAIL A
2x12x4-0" TIES

SCALE: 0 2 F.T.



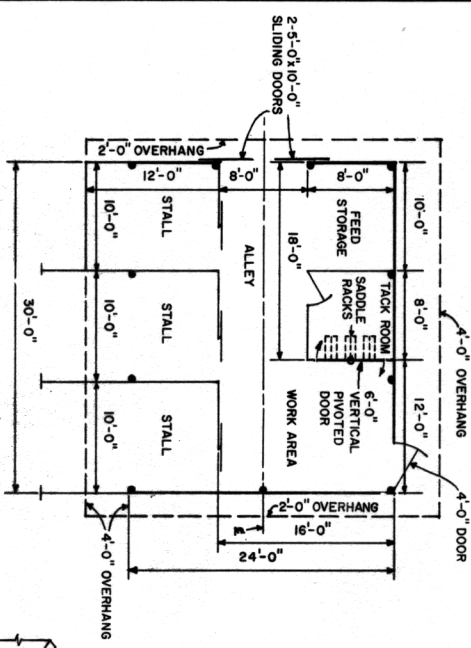
DETAIL B

SCALE: 0 2 F.T.



SECTION

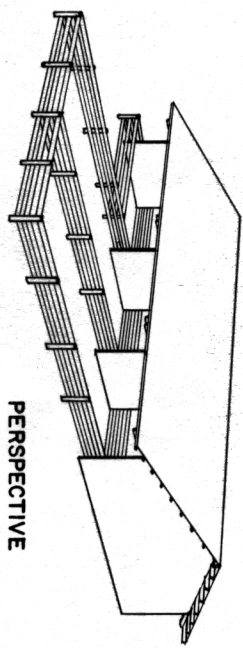
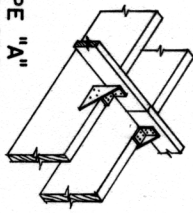
SCALE: 0 2 4 6 F.T.



PLAN

SCALE: 0 4 8 12 F.T.

TYPE "A" ANCHORS



PERSPECTIVE

BILL OF MATERIALS FOR BUILDING WITHOUT WALLS OR PARTITIONS

- 12-2x12x17-0" RAFTERS
 - 3-2x12x16-0" TIES DETAIL A
 - 3-2x12x12-0" PURLINS DETAIL B
 - 17-2x12x10-0" PURLINS OR 6x6x18-0"
 - 8-6 DIAMETER 18-0" OR 6x6x18-0" PRESSURE TREATED POLES
 - 3-6 DIAMETER 20-0" OR 6x6x20-0" PRESSURE TREATED POLES
 - 48-40d COMMON NAILS
 - 102-PIECES OF TYPE A METAL ANCHORS FOR HOLDING PURLINS IN PLACE, OR 2x4x16" METAL OR WOOD ANCHORS.
 - 1156 SQUARE FEET OF ROOFING.
 - 48-3/4"x16 1/2" MACHINE BOLTS WITH WASHERS
 - 24-3/4"x10" MACHINE BOLTS WITH WASHERS
- END POLES REQUIRE A RAFTER FASTENED ON INSIDE ON EACH SIDE OF POLE.
 ON EACH SIDE OF POLE.
 ADDITIONAL POST OR POLES AND LUMBER REQUIRED AS NECESSARY FOR PARTITIONS AND PENS.
 PARTITIONS CAN BE MADE WITH 2 LUMBER, OR 1 EXTERIOR TYPE PLYWOOD.
 TACK ROOM SHOULD BE MADE RODENT PROOF.
 CONCRETE FLOOR IN STORAGE AREAS IS PREFERRED.
 USE HORSE PROOF AND RODENT PROOF GRAIN STORAGE.
 A SLATTED FENCE PROVIDES A BETTER WIND BREAK THAN A SOLID FENCE.
 THIS PLAN MAY BE LENGTHENED OR SHORTENED BY 10'-0"

BASED ON: OREGON STATE UNIV.
BLDG. PLAN 102

COOPERATIVE EXTENSION WORK IN AGRICULTURE AND HOME ECONOMICS			
DEPARTMENT OF AGRICULTURAL ENGINEERING			
UNIVERSITY OF MARYLAND			
AND UNITED STATES DEPARTMENT OF AGRICULTURE COOPERATING			
HORSE BARN			
ORE.	'71	6107	SHEET 1 OF 1