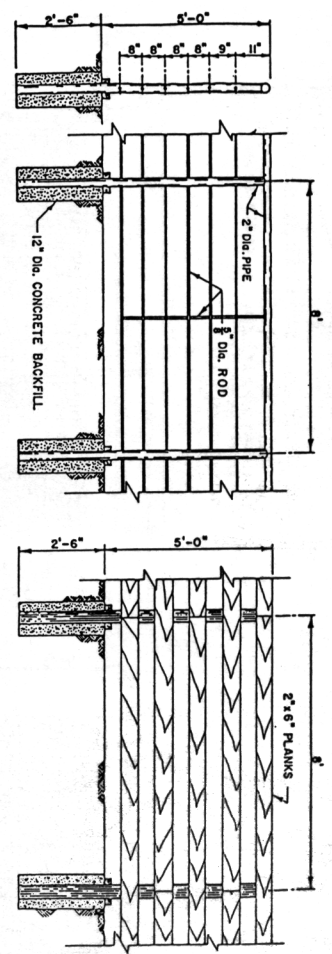
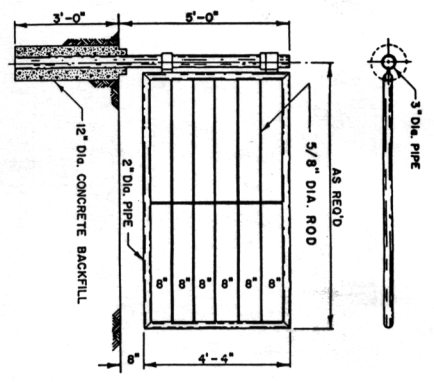


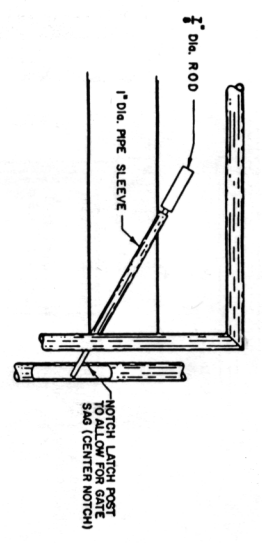
- NOTE:
1. USE PRESERVE PERSEVERATIVE TREATED POSTS WITH A MINIMUM TOP DIAMETER OF 4".
 2. FASTEN PLANKS TO POSTS WITH 3 RING OR SCREW SHANK NAILS, STAGGERED TO AVOID SPLITTING THE PLANK.



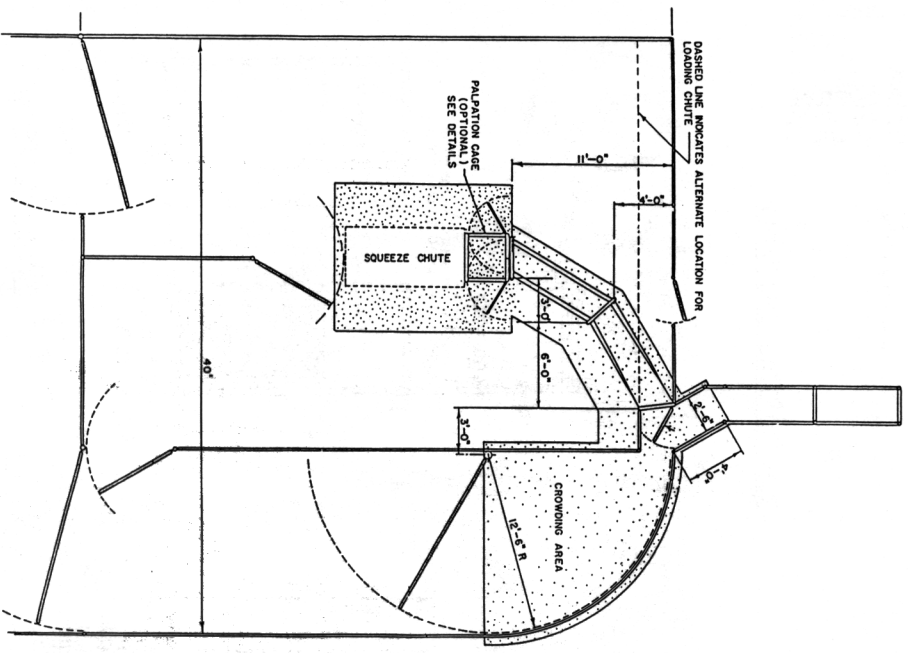
TYPICAL FENCE DETAILS



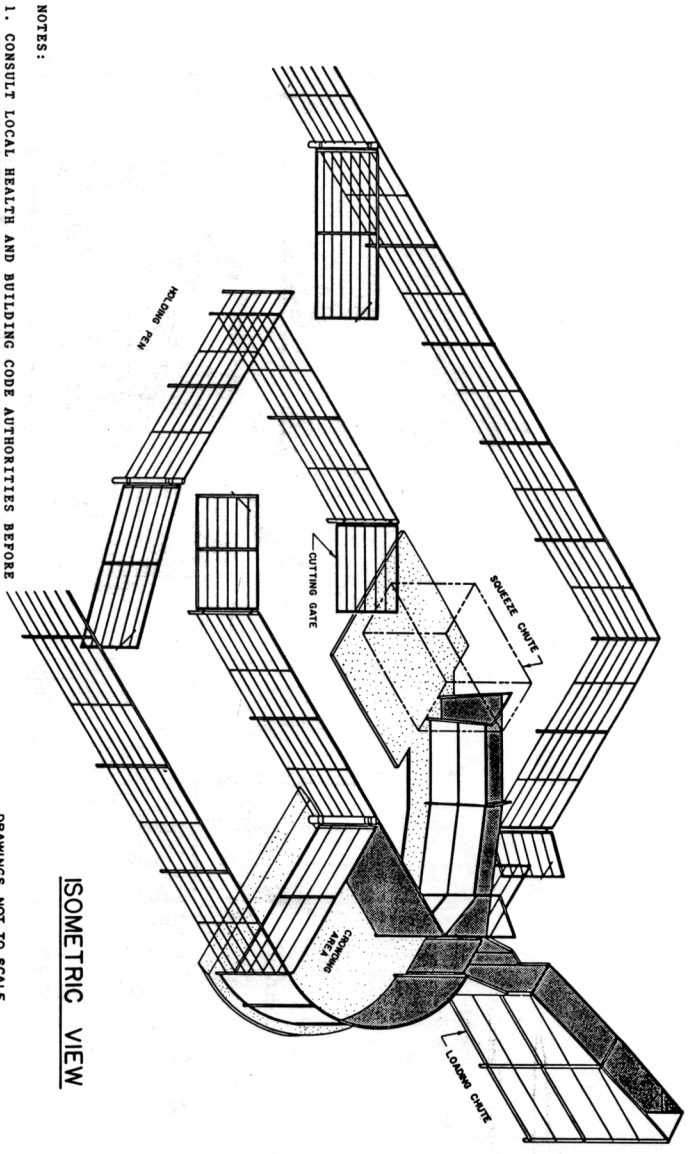
TYPICAL GATE DETAILS



TYPICAL GATE LATCH



PLAN VIEW



ISOMETRIC VIEW

- NOTES:
1. CONSULT LOCAL HEALTH AND BUILDING CODE AUTHORITIES BEFORE STARTING CONSTRUCTION.
 2. BEGIN CONSTRUCTION WITH PLACEMENT OF CROWDING GATE POST. THE REMAINDER OF WORKING FACILITY IS LAID OUT FROM THIS POINT.
 3. PLACE CONCRETE OVER WELI-DRAINED, UNDISTURBED SOIL, TAMPED SOIL, OR GRAVEL FILL. ALL SURFACE ORGANIC MATTER, MANURE, TRASH, AND SOFT SOIL SHOULD BE REMOVED.
 4. USE 6x6, No. 10 WW MESH WITH CONCRETE PLACED OVER SOFT OR SPONGY SOIL.
 5. SLOPE CROWDING AREA FLOOR 1/4" PER FOOT TO OUTSIDE FOR DRAINAGE.
 6. PROVIDE A ROUGH CONCRETE FINISH TO INSURE STABLE FOOTING FOR ANIMALS.
 7. ALL SHEET STEEL MOUNTED INSIDE OF POSTS.

DRAWINGS NOT TO SCALE

COOPERATIVE EXTENSION SERVICE
 AGRICULTURE AND HOME ECONOMICS

UNITED STATES DEPARTMENT OF AGRICULTURE COOPERATING
 AND
 CORRALS
 WITH WORKING FACILITIES

OK 75	6230	SHEET 1 OF 3
REV 86		