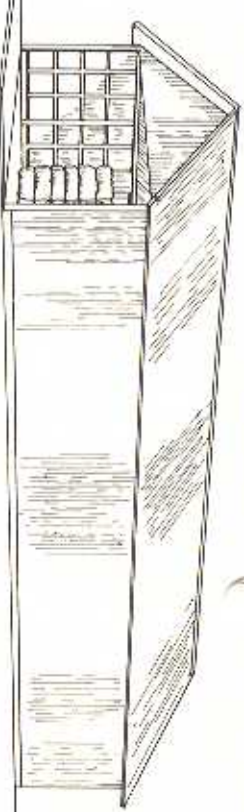
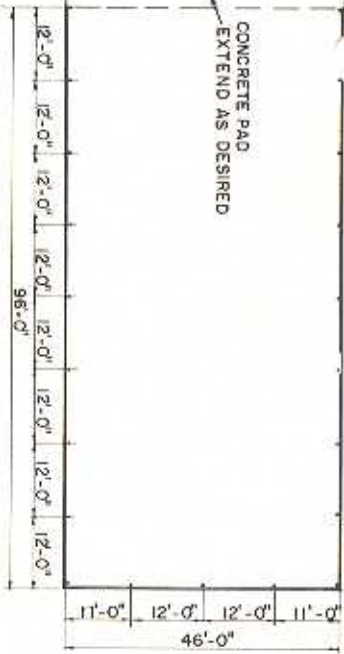


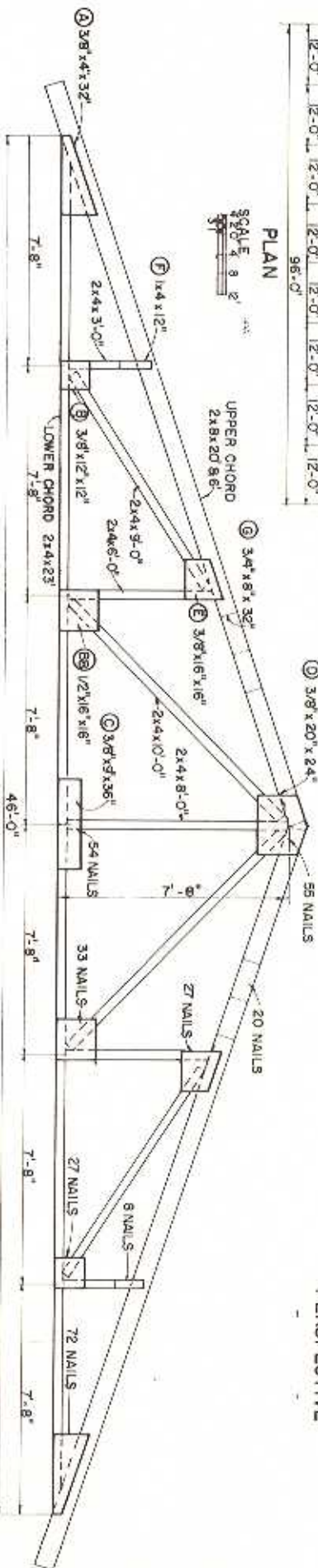
CONCRETE PAD
EXTEND AS DESIRED



PERSPECTIVE

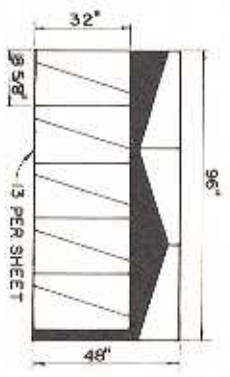
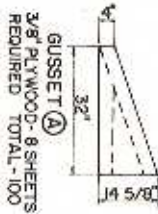
PLAN

SCALE 1/4\"/>

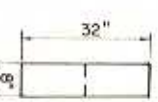
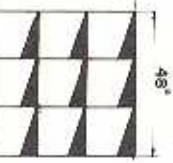
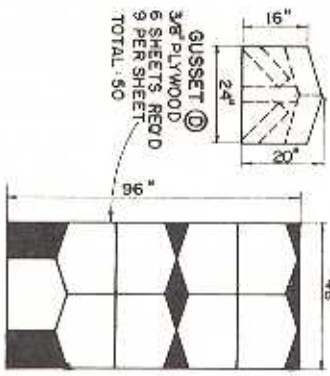
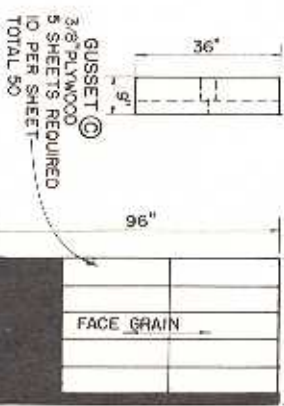
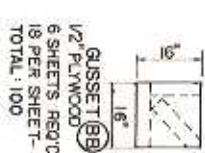


TRUSS DETAIL A

NOTE:
THE NUMBER OF NAILS SPECIFIED FOR EACH JOINT SHOULD BE DIVIDED EVENLY BETWEEN THE TWO SIDES OF THE JOINT AND THE MEMBERS IN THE JOINT



DETAIL OF GUSSETS



SCALE: UNLESS OTHERWISE NOTED: 1/4" = 1'-0"

COOPERATIVE EXTENSION WORK IN AGRICULTURE AND HOME ECONOMICS

UNITED STATES DEPARTMENT OF AGRICULTURE COOPERATING AND BARN FOR AUTOMATIC BALE WAGONS

OKLA. '77 6279 SHEET 1 OF 3

BASED ON: OKLA. STATE UNIV. PLAN NO. OK-724-22