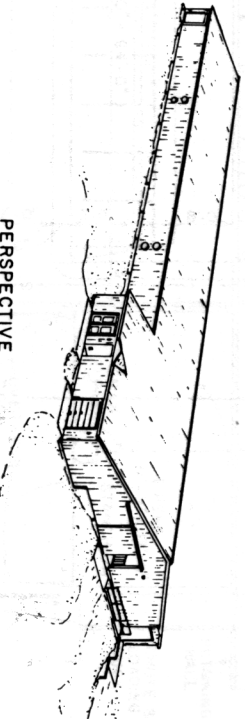


OPTIONS AND CROSS SECTION

ANIMAL SIZE	TIE STALLS
COW	GIRTH WEIGHT WIDTH LENGTH
SMALL	7'1" 1000 LBS. 4'-0" 5'-0"
MEDIUM	78" 1300 LBS. 4'-3" 5'-6"
LARGE	86" 1600 LBS. 4'-6" 6'-0"



- NOTES:
1. DETERMINE IF WATER SUPPLY IS PURE AND SUFFICIENT.
 2. CHECK WITH ELECTRIC UTILITY ABOUT EASEMENTS & SERVICE.
 3. CHECK WITH LOCAL GOVERNMENTS ABOUT ZONING & BUILDING RESTRICTIONS OR REQUIRED PERMITS.
 4. SUBMIT PLANS TO YOUR MILK INSPECTOR FOR APPROVAL AND MAKE ARRANGEMENTS TO SHIP MILK.
 5. CHECK DIMENSIONS OF MANUFACTURED EQUIPMENT TO BE INSTALLED BEFORE STARTING CONSTRUCTION.
 6. ALL LUMBER IN CONTACT WITH MANURE OR SOIL SHOULD BE PRESURE PRESERVATIVE TREATED (P.P.T.).
 7. MILKLINE MUST BE SUPPORTED AT A UNIFORM SLOPE FOR DRAINAGE.
 8. MILKROOM MUST BE HIGH ENOUGH FOR BULK TANK CALIBRATION AND MILK MEASUREMENT (WITH DIP STICK).
 9. FLUORESCENT LIGHTS SHOULD BE MOISTURE RESISTANT, INDUSTRIAL GRADE FIXTURES.
 10. APPROVED BY NORTHEAST DAIRY PRACTICES COUNCIL MAR. 1986.

