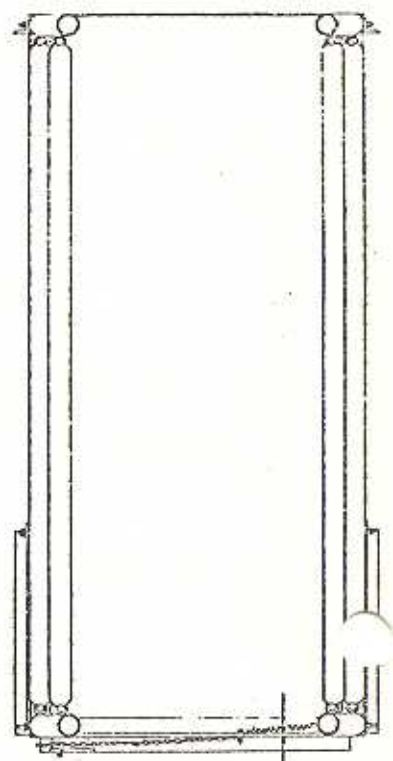
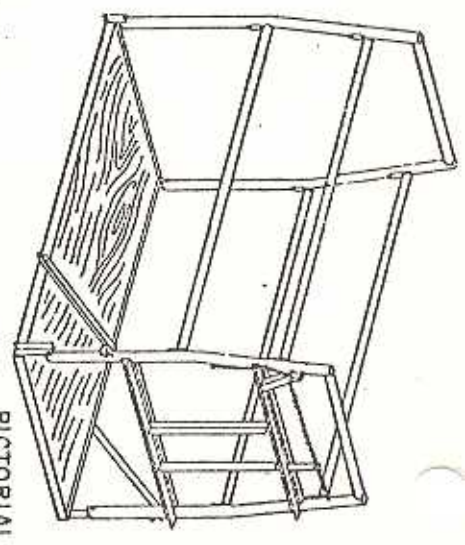


CHAIN CATCH DETAILS

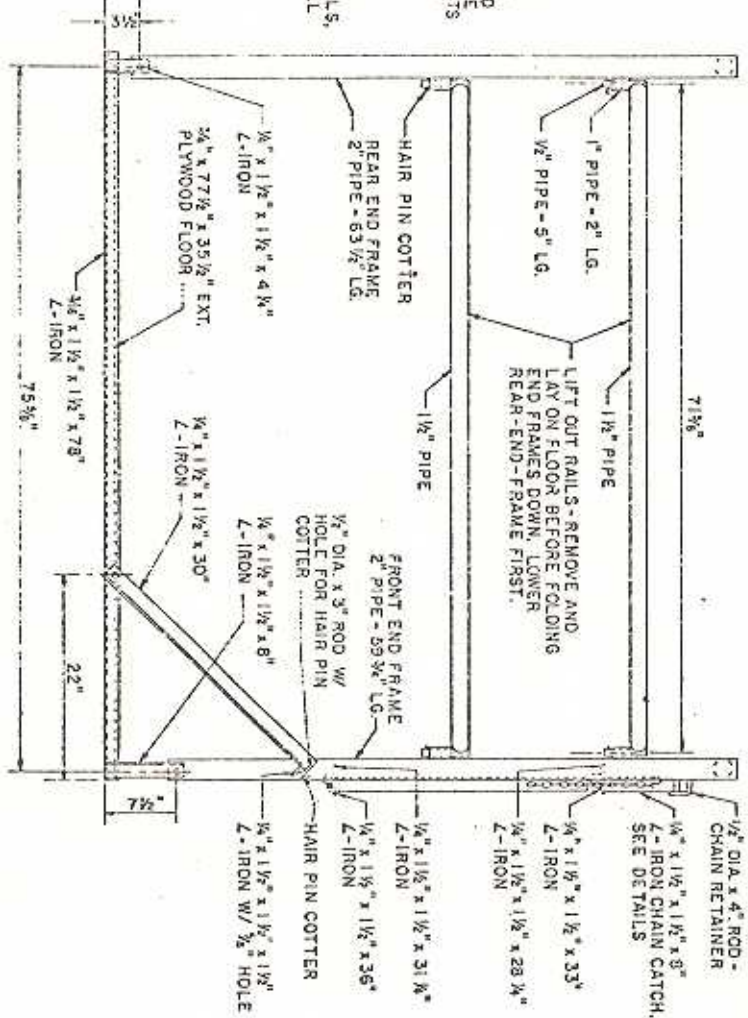


SECTION A-A



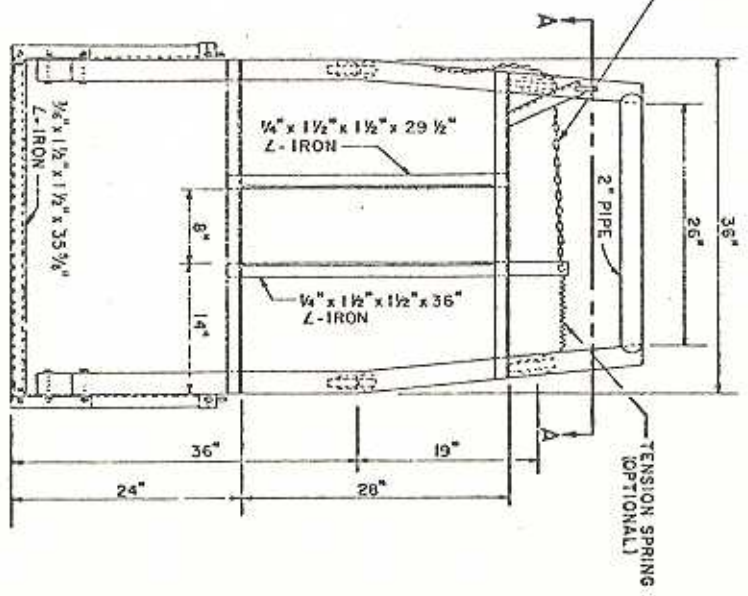
PICTORIAL

- NOTES:
1. INDICATES PIVOTING POINTS - FASTEN WITH $\frac{1}{2}$ " BOLTS USE 2 NUTS TO LOCK BOLTS IN PLACE AND TO ALLOW PARTS TO MOVE FREELY. ALL OTHER PARTS TO BE WELDED IN PLACE AS SHOWN.
 2. THIS CHUTE SIZED FOR 1400 LB. DAIRY COW. FOR OTHER SIZED ANIMALS, CERTAIN DIMENSIONS WILL NEED TO BE CHANGED.



SIDE VIEW

STRAIGHT LINK MACHINE CHAIN - 1/2" DIA. LINK, INSIDE LENGTH 0.74" OR EQUIVALENT SHORT LINK WELDED CHAIN



END VIEW

COOPERATIVE EXTENSION WORK IN AGRICULTURE AND HOME ECONOMICS

DAIRY COW TRIMMING CHUTE (PORTABLE)

W. VA. 76 6303 SHEET 1 OF 1