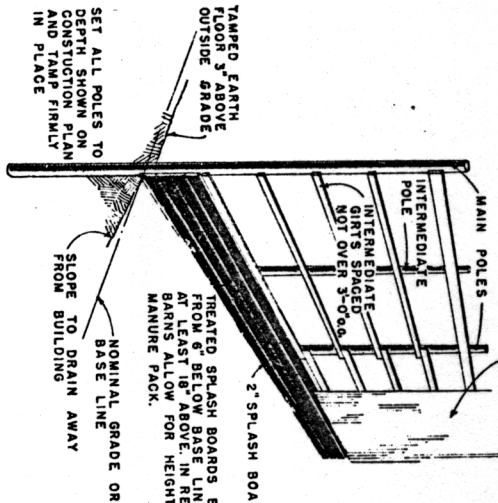
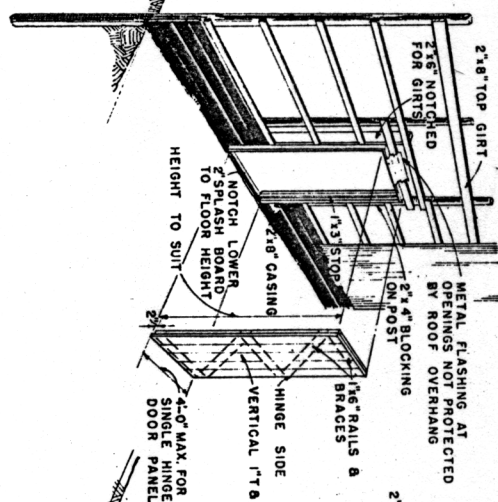


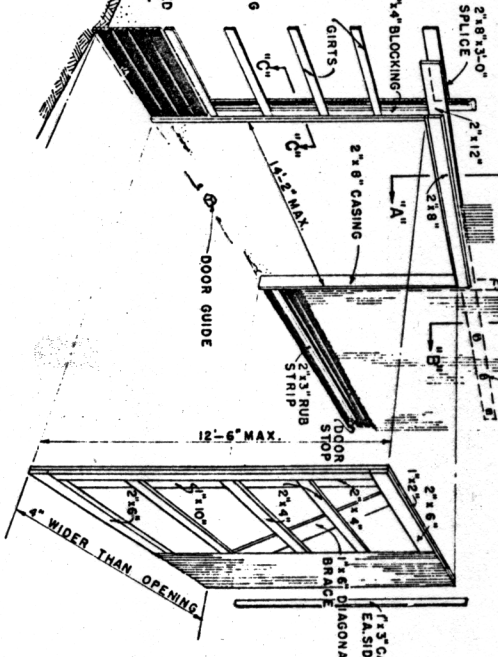
VERTICAL 1" WOOD OR 2 1/2" CORRUGATED METAL SIDING TO EXTEND FROM TOP OF 2"x8" GIRTS OR PURLINS TO 2"x8" INTERMEDIATE GIRTS SPACED NOT OVER 3'-0". DO NOT NAIL TO SPLASH BOARDS.



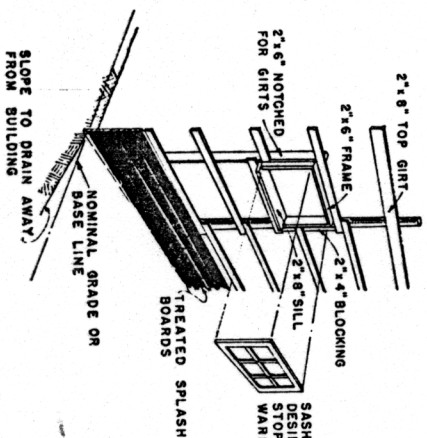
TYPICAL WALL CONSTRUCTION
(ROOF FRAMING NOT SHOWN)



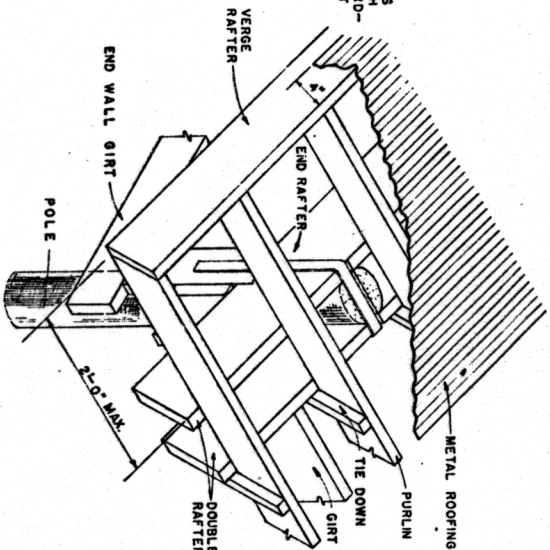
TYPICAL FRAMING
FOR HINGED DOOR



TYPICAL FRAMING
FOR SLIDING DOOR

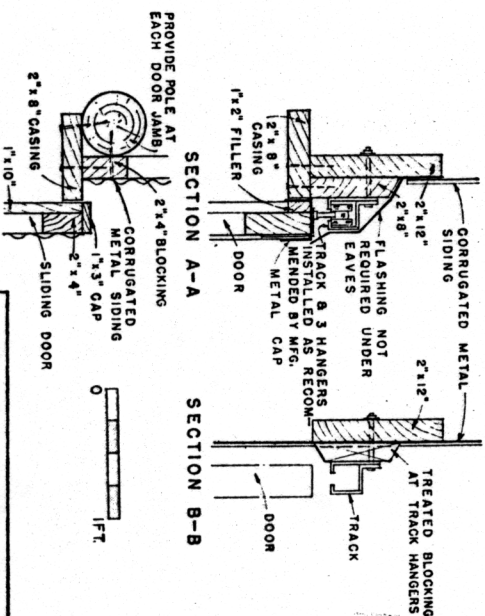


TYPICAL WINDOW
INSTALLATION



ROOF OVERHANG AT ENDWALL
(DOUBLE RAFTERS & PURLIN CONSTRUCTION SHOWN)

(DOUBLE RAFTERS & PURLIN CONSTRUCTION SHOWN) WHEN SHEATHING IS USED INSTEAD OF PURLIN IT MAY BE EXTENDED IN SIMILAR MANNER. PROVIDE BLOCKING BETWEEN END & VERGE RAFTERS IF OVERHANG EXCEEDS 12'.



SECTION A-A
SECTION B-B

NOTE: EQUIP METAL COVERED BUILDINGS WITH ADEQUATE LIGHTNING PROTECTION SYSTEM IN AREAS WHERE NEEDED. PROTECTION TO BUILDINGS AND FARM PROPERTY FROM LIGHTNING AS A GUIDE.

COOPERATIVE EXTENSION WORK IN
AGRICULTURE AND HOME ECONOMICS
DEPARTMENT OF AGRICULTURAL ENGINEERING
UNIVERSITY OF MARYLAND

UNITED STATES DEPARTMENT OF AGRICULTURE COOPERATING
AND
WALLS, DOORS & WINDOWS
FOR POLE TYPE BUILDINGS
USDA 97 EX. 5833 SHEET 1 OF 1