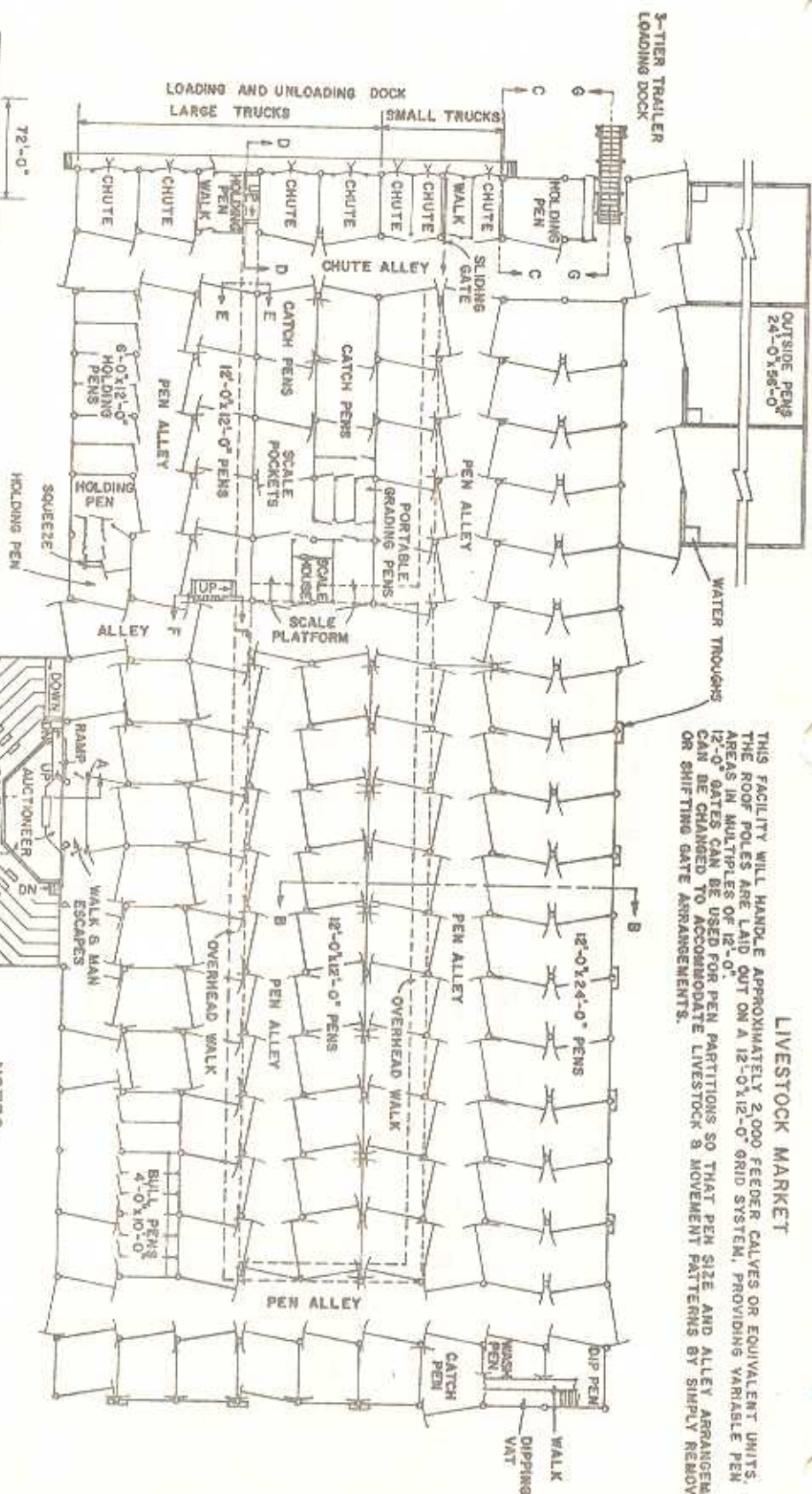


LIVESTOCK MARKET

THIS FACILITY WILL HANDLE APPROXIMATELY 2,000 FEEDER CALVES OR EQUIVALENT UNITS. THE ROOF POLES ARE LAID OUT ON A 12'-0" X 12'-0" GRID SYSTEM, PROVIDING VARIABLE PEN AREAS IN MULTIPLES OF 12'-0". 12'-0" GATES CAN BE USED FOR PEN PARTITIONS SO THAT PEN SIZE AND ALLEY ARRANGEMENTS CAN BE CHANGED TO ACCOMMODATE LIVESTOCK & MOVEMENT PATTERNS BY SIMPLY REMOVING OR SHIFTING GATE ARRANGEMENTS.



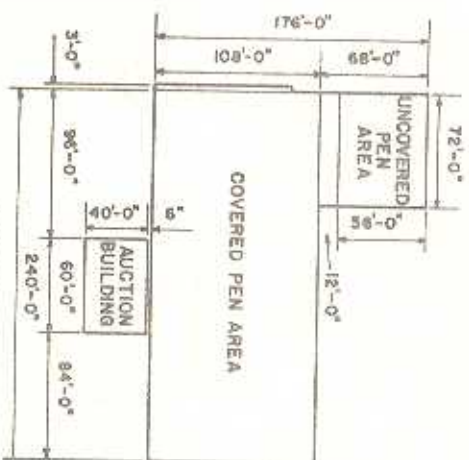
NOTES:

- 1) ALL ALLEYS ARE 12'-0" WIDE.
- 2) NUMBER AND SIZE OF PENS:
HOLDING PENS: 16, 12'-0" x 24'-0", 34, 12'-0" x 12'-0", 8, 6'-0" x 12'-0"
BULL PENS: 6, 4'-0" x 10'-0"
OUTSIDE PENS: 3, 24'-0" x 56'-0"
- 3) GATES ON SIDES OF 12'-0" & 24'-0" PENS PROVIDE MEANS FOR EASY MECHANICAL CLEANING.
- 4) AUDITORIUM SEATING CAPACITY, APPROXIMATELY 300.
- 5) CHECK LOCAL & STATE ZONING, HEALTH & POLLUTION CODES BEFORE CONSTRUCTION OF ANIMAL FACILITY.
- 6) ALL POLES AND OTHER WOOD IN CONTACT WITH THE GROUND OR MANURE TO BE TREATED WITH PRESERVATIVE.

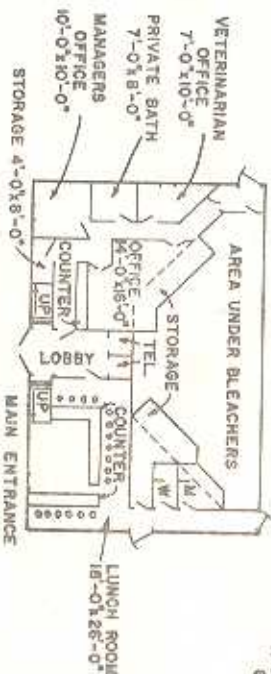
FLOOR PLAN OF AUDITORIUM



PLOT PLAN



FLOOR PLAN OF FIRST FLOOR



COOPERATIVE EXTENSION WORK IN
AGRICULTURE AND HOME ECONOMICS

LIVESTOCK MARKET

W. VA. 71 6129 SHEET 1 OF 6