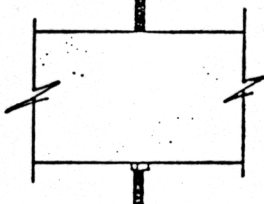
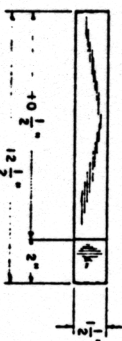


7-1 GALVANIZED STEEL CABLE

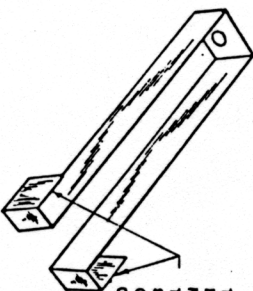


COMPRESSION OF SPRING

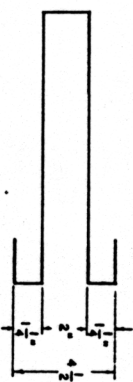
NOTE:
1/2" GALVANIZED EYE BOLTS
FOR USE ON END POSTS



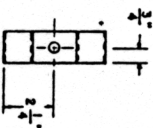
TOP VIEW



THE LE OF SHACKLE SHOULD BE LONG ENOUGH TO COMPENSATE FOR THE SHAPE OF THE SPRING. TWO SHACKLES REQUIRED PER SPRING. SECOND SHACKLE MUST BE FORMED OVER SPRING END AFTER INSTALLATION OF THE FIRST SHACKLE.

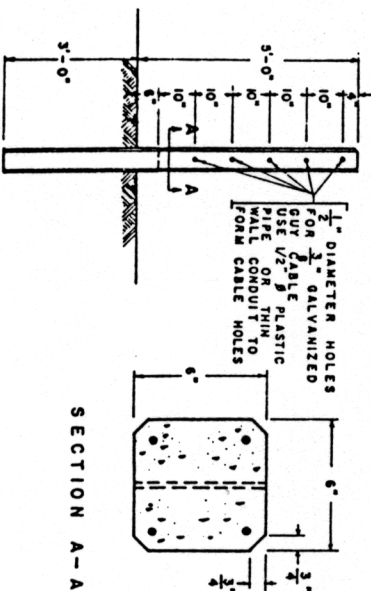


FRONT VIEW



SHACKLE

NOTE:
OUTSIDE DIAMETER OF
AUTOMOBILE SPRING FROM
SALVAGE SHOULD BE A
MINIMUM OF 4"

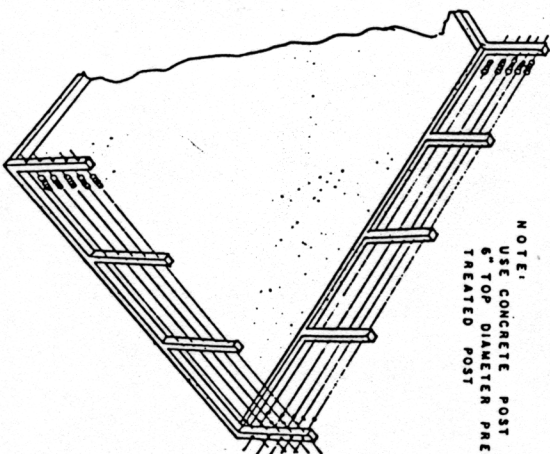


SECTION A-A

NOTE: "4 NO. 3 ($\frac{3}{8}$) RE-BARS PLACED IN THE CORNERS AND COVERED WITH A MINIMUM OF $\frac{1}{4}$ " OF CONCRETE AT ALL POINTS.

THE LARGEST SIZE AGGREGATE SHOULD BE $\frac{1}{2}$ "

BEVEL CORNERS BY PLACING
 $\frac{1}{2}$ " TRIANGULAR STRIP
IN FORM



PERSPECTIVE

NOTE:
USE CONCRETE POST OR
6" TOP DIAMETER PRESSURE
TREATED POST

BASED ON: MISS. STATE UNIV. PLAN NO. 6961A

CABLE FENCING

UNITEDESTATESDEPARTMENTOFAGRICULTURECOOPERATING			
UNIVERSITY OF MARYLAND AND DEPARTMENT OF AGRICULTURAL ENGINEERING			
CABLE FENCING			
MISS. '73	EX. 6162	SHEET 1 OF 1	