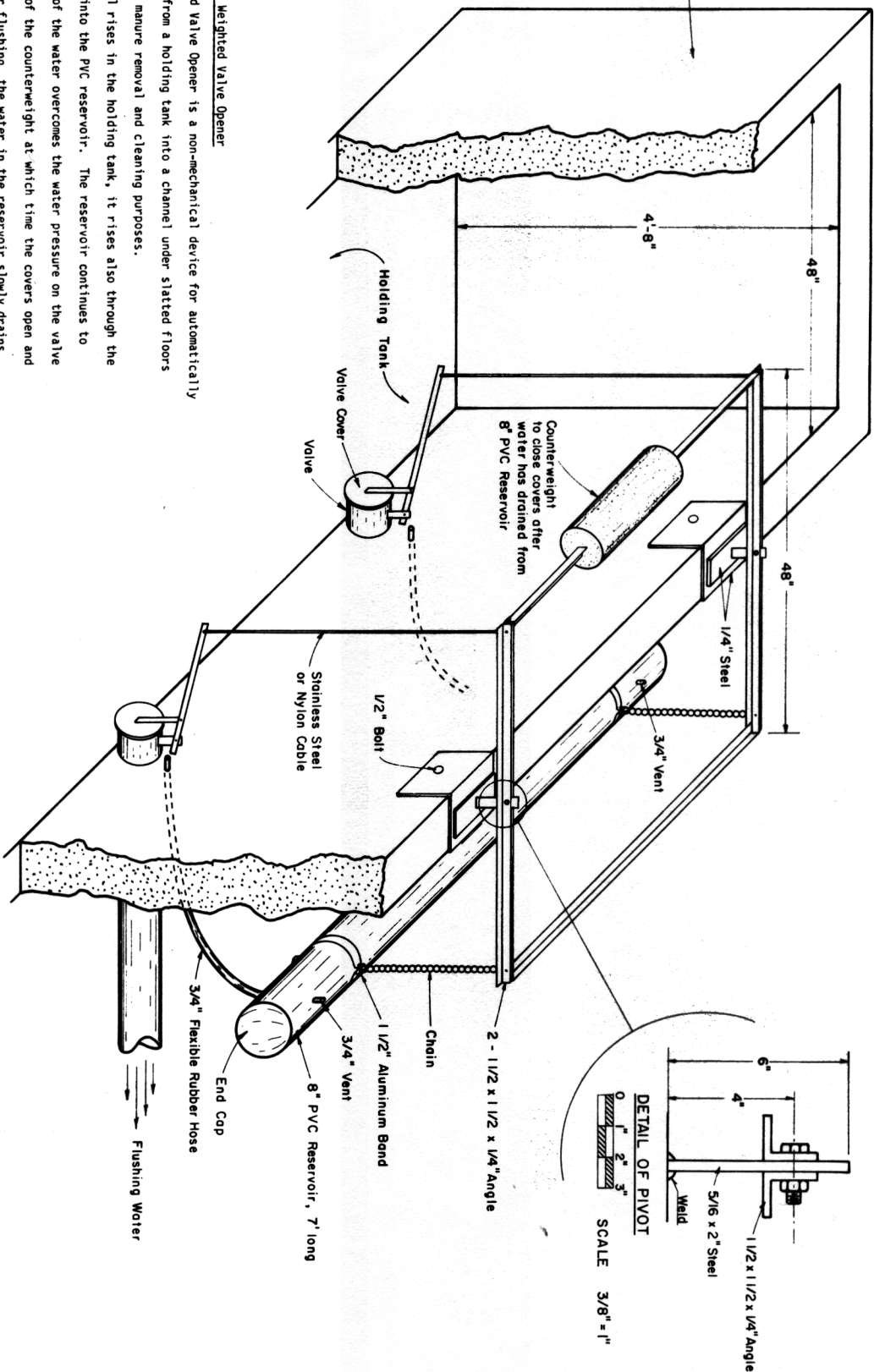


FLUSH TANK.



Operation of the Water Weighted Valve Opener

The Water Weighted Valve Opener is a non-mechanical device for automatically releasing flush water from a holding tank into a channel under slatted floors or an open channel for manure removal and cleaning purposes.

As the water level rises in the holding tank, it rises also through the flexible rubber hoses into the PVC reservoir. The reservoir continues to fill until the weight of the water overcomes the water pressure on the valve covers and the weight of the counterweight at which time the covers open and flushing begins. After flushing, the water in the reservoir slowly drains back into the holding tank, the valve covers close and the holding tank begins to fill again. The flushing interval is determined by the pumping rate into the holding tank.

In many cases one side of the holding tank and the end wall of a building is a common wall; then the Water Weighted Valve Opener must be positioned on the opposite side of the holding tank.

Upon installation the amount of counterweight can be determined and fastened securely. Also adjustments will be needed on the suspension chains so the tank can fill to the desired level.

PERSPECTIVE VIEW

NO SCALE

COOPERATIVE EXTENSION SERVICE
AGRICULTURE AND HOME ECONOMICS

UNITED STATES DEPARTMENT OF AGRICULTURE COOPERATING

WATER WEIGHTED VALVE OPENER

N.C. '83

6363

SHEET 1 OF 1