

NOTES

1. CONCRETE FLOOR SLAB 5 1/2" OVER 6" TO 8" GRAVEL BASE; SLOPE AT LEAST 1/8" PER 1'.
2. FLOOR SLAB, WITH 15 ANY MULTIPLE OF 8'-0", MINIMUM WITH 15 2 TIMES WALL HEIGHT TO ALLOW SPACE FOR CASTING WALL PANELS.
3. CRACK CONTROL JOINTS GROOVED OR SAWN 1" INTO FLOOR SLAB 16" OC BOTH WAYS.
4. CONTINUOUS #5 REBAR, STOPS AT 3 LOCATE REBAR 2" IN FROM EDGE AND UP FROM BOTTOM OF SLAB.
5. BUTTRESS ON LEVELLING PADS.
6. BUTTRESS FOOTING.
7. CONCRETE WALL PANELS, TIED TO TOP OF BUTTRESSES.
8. BACKFILL, MINIMUM 3'-4" DEEP.
9. LEFT SIDES IN PLACE AS SHOWN.

SPECIFICATIONS

UNLESS OTHERWISE SPECIFIED, ALL CAST-IN-PLACE CONCRETE IS TO BE AT LEAST 4000 PSI @ 28 DAYS, 1/2 AIR ENTRAINMENT, 3/4" MAX. AGGREGATE SIZE; USE SULPHATE RESISTANT CEMENT WITH ALKALI SOILS.

ALL REINFORCING STEEL TO BE AT LEAST 60 000 PSI YIELD STRENGTH DEFORMED BARS; PROVIDE 2" CONCRETE COVER REINFORCING STEEL.

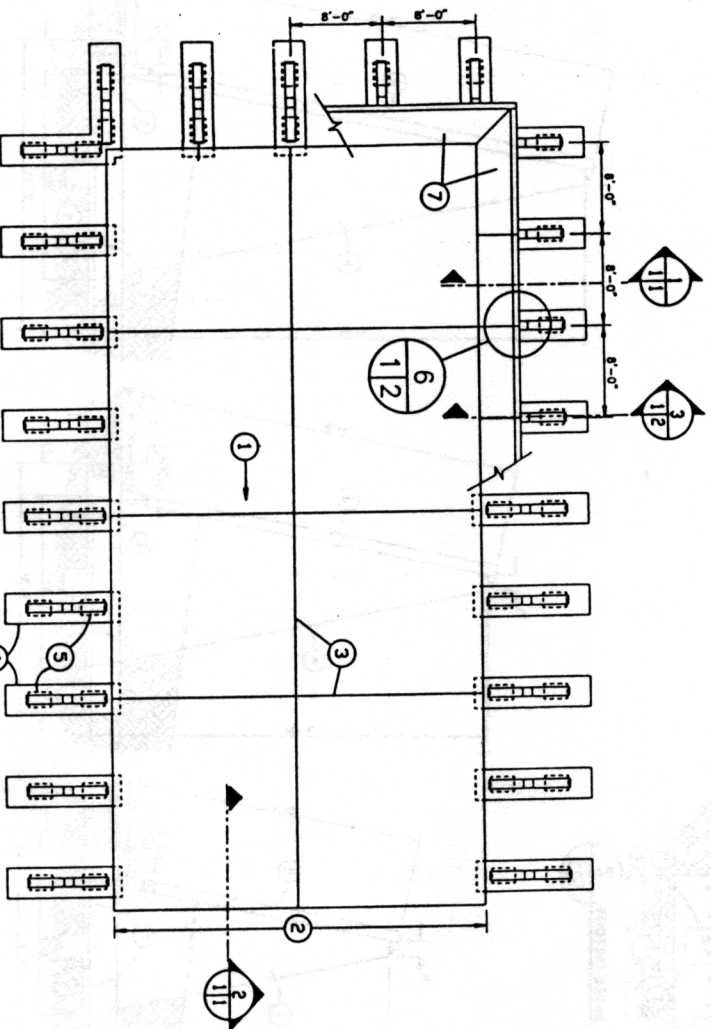
CONCRETE TO BE CURED IN FORMS, KEEPING EXPOSED SURFACES CONTINUOUSLY DAMP BY FREQUENT SPRINKLING OR COVER THE SURFACE WITH WETTED BURLAP; MINIMUM CURING TIMES AS FOLLOWS:

AVERAGE CURING TEMPERATURE	NORMAL PORTLAND CEMENT	HIGH EARLY STRENGTH CEMENT
ABOVE 60°F	5 DAYS	3 DAYS
50° - 60°F	7 DAYS	5 DAYS
BELOW 50°F	(SPECIAL PRECAUTIONS REQUIRED)	

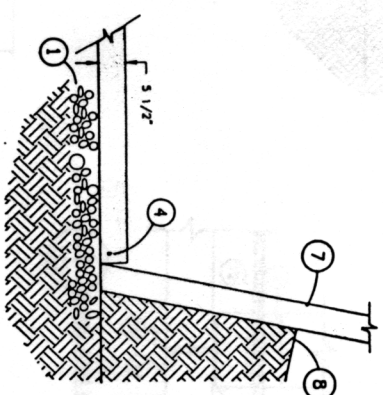
ALL EXPOSED STEEL TO BE GALVANIZED OR PAINTED TO RESIST CORROSION.

CONCRETE REQUIREMENTS, ft³

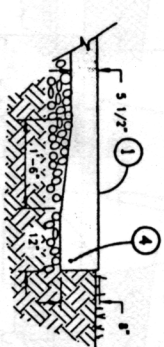
	20 ft	16 ft	12 ft	8 ft
FOOTING	85.1	58.6	37.5	31.5
BUTTRESS	74.8	49.8	30.5	15.6
WALL PANEL	74.2	60.4	44.5	29.6



FLOOR PLAN



1 FLOOR EDGE DETAIL



2 FLOOR EDGE DETAIL

COOPERATIVE EXTENSION SERVICE
AGRICULTURE AND HOME ECONOMIC

UNITED STATES DEPARTMENT OF AGRICULTURE COOPERATIVE
BUTTRESSED CONCRETE HORIZONTAL
SILO 8-20 II. HIGH
C.P.S. '88 6408 SHEET 1 OF