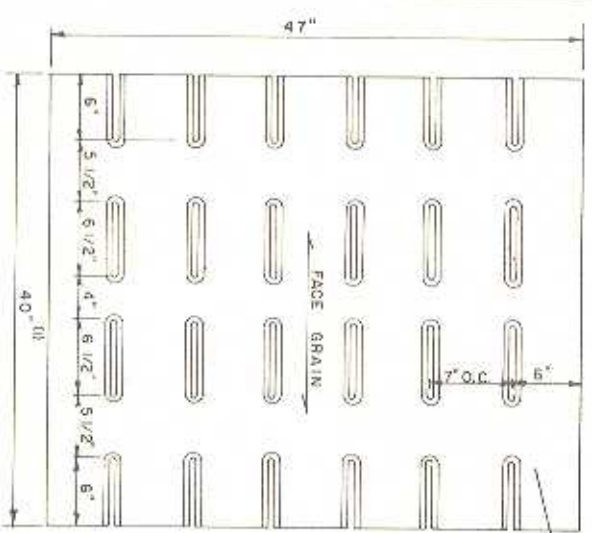
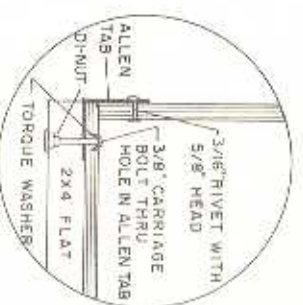
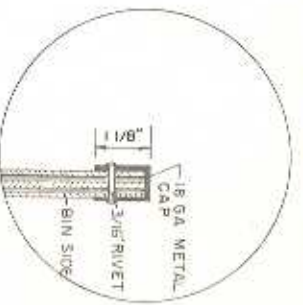
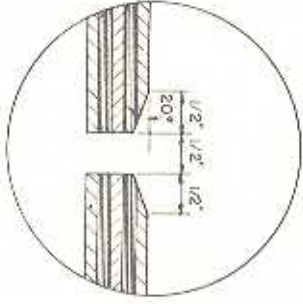
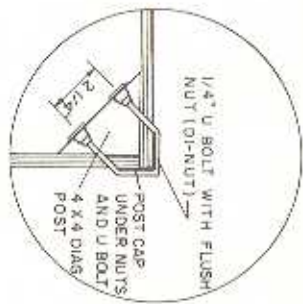
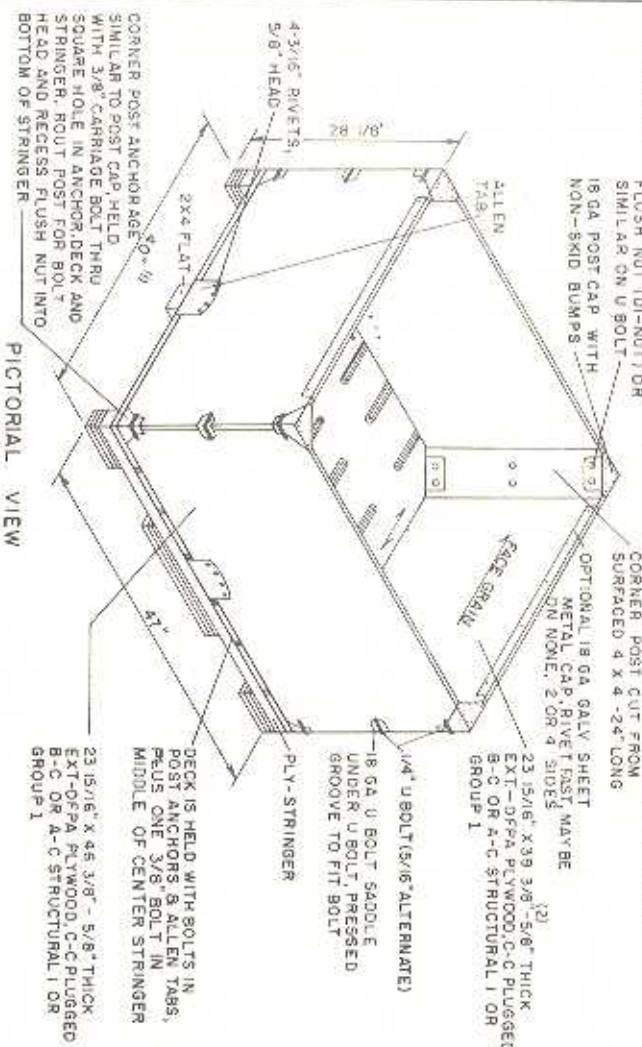


This design is based on the use of approved Plywood Association Grade-Treated Plywood. Structural deficiencies may occur in the substitution of materials. Because variation of the structure cannot be expected on availability can be assumed to be 24" in the case of the Plywood Association. Mention of a trade name does not constitute a guarantee of quality of the product by the U.S. Department of Agriculture or an endorsement by the Department of other products not mentioned.

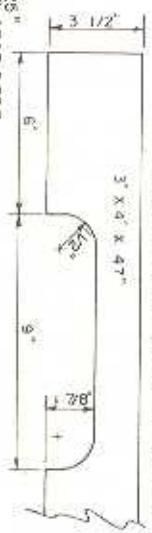


47" x 40" - 5/8" THICK EXT-DPEA PLYWOOD, C-C PLUGGED, B-C OR A-C STRUCTURAL I, GROUP 1 OR GROUP 2

TOTAL OPEN AREA OF SLOTS: 75.50 IN



END BLOCKS ARE 6" x 2 5/8" x 17/8" THICK. CENTER BLOCK 17" x 2 5/8" x 1 7/8" THICK. BLOCKS CONSIST OF 3 LAYERS OF 5/8" EXT-DPEA PLYWOOD FASTENED TO 2 X 3 WITH 1/4" RING SHANK NAILS AND BY BOLTS FASTENING BIN BOTTOM TO STRINGERS.



(I) REDUCE TO 3825" TO CONFORM TO ASAE S 337.

(II) REDUCE TO 38825" TO CONFORM TO ASAE S 337.

* SOME BOTTOMS MANUFACTURED WITH 7 ROWS OF SLOTS. SLOTS 3/8" WIDE. PROVIDE TOTAL OPEN AREA OF 109.50 IN. EDGE SPACING IS THEN 5 7/8".

AMERICAN PLYWOOD ASSOC. FORM NO. 70-165

NOTE: THE SIZE OF THIS BIN IS SUCH THAT IT WILL FIT ON FLATBED TRUCKS, IN CLOSED WANS AND REFRIGERATED RAILROAD CARS, WITH ONE DIMENSION 47" IT CAN BE HANDLED IN MOST AUTOMATIC BIN HANDLING EQUIPMENT NOW BEING BUILT TO HANDLE THE STANDARD 47" x 47" BIN. THE INSIDE DEPTH OF 24" IS THE ACCEPTED STANDARD FOR MOST FRUIT AS DETERMINED BY UNIVERSITY RESEARCH.

DESIGNED TO CONFORM TO AMERICAN SOCIETY OF AGRICULTURAL ENGINEERS RECOMMENDED INDUSTRY-WIDE STANDARDS FOR AUTOMATED HANDLING EQUIPMENT ASAE S 337.

COOPERATIVE EXTENSION WORK IN AGRICULTURE AND HOME ECONOMICS
DEPARTMENT OF AGRICULTURAL ENGINEERING
UNIVERSITY OF MARYLAND

UNITED STATES DEPARTMENT OF AGRICULTURE
AND
NATIONAL EXTENSION SERVICE

PALLET BIN
47 X 40

ASA 71 6120 SHEET 1 OF 1