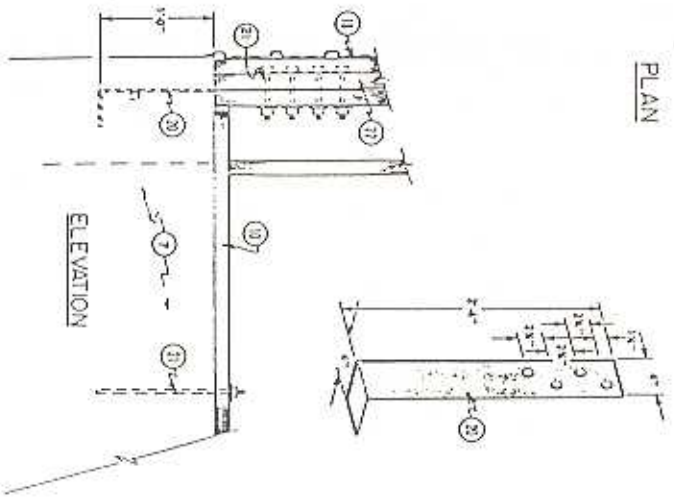
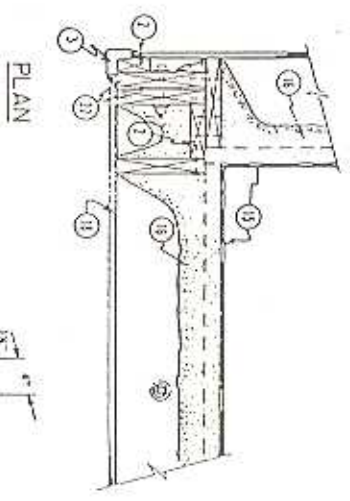
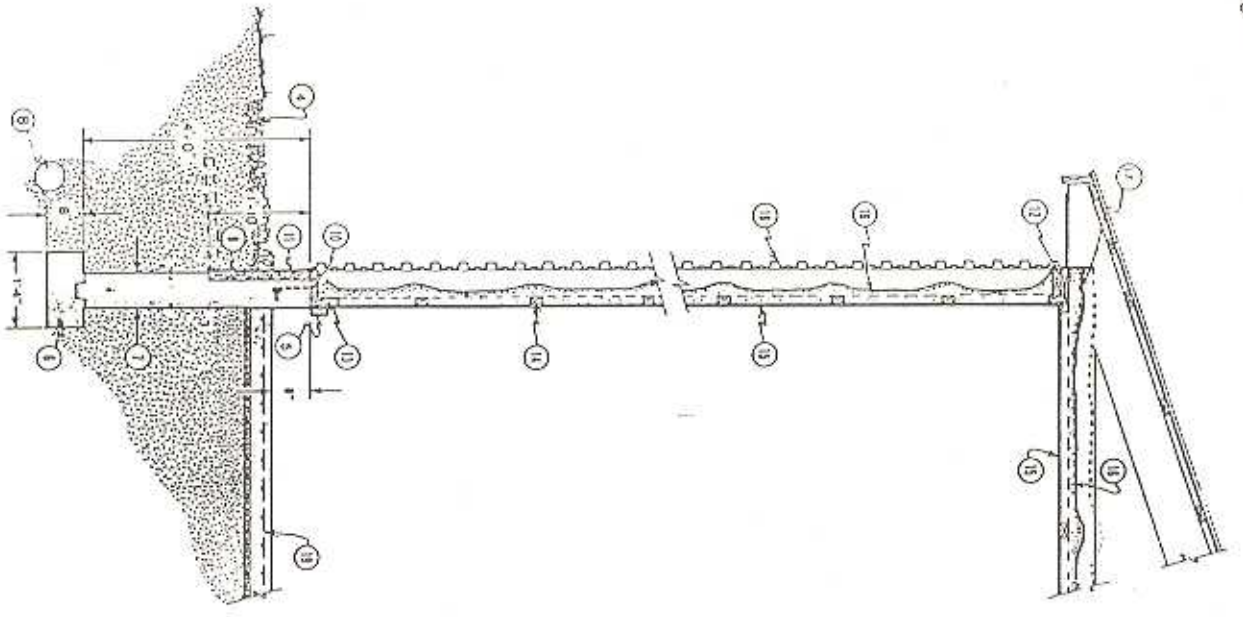


STUD WALL HEIGHT ft. STUD SIZE F = 1450 psi E = 1,700,000 psi ENDWALL ANCHOR BOLT SPACING in.

STUD WALL HEIGHT ft.	STUD SIZE	ENDWALL ANCHOR BOLT SPACING in.
12	No. 2 Douglas Fir	48
14	2 x 6	48
16	2 x 8	36
18	2 x 8	32
20	2 x 10	32



SECTION AND ELEVATION OF STRAP ANCHOR AND ENDWALL CORNERS AND DOORWAYS



WALL SECTION

1. Studs @ 4'-0" o.c., recommended stud sizes based on 1/2" clear span brdg., 52 psf total roof + ceiling load combined with 15 psf wind load pressure
2. 2x stud width blocking (see 1), nail to studs
3. Outside corner trim, to match siding
4. 30" x 4" deep coarse gravel splash pad
5. 2 x 6 bumper rail
6. Concrete footing, 2#6 bars, extend below frostline 4'-0" min.
7. Concrete foundation to below frost, 2-mo. 6 rebar reinforcement provide vertical control joints 30'-0" o.c.-1 foundation thickness = stud size + 2"
8. 6" drain tile placed outside of footing as needed.
9. 2" x 1'-10" polyurethane perimeter insulation back with finishing walls to form 1/2" cold air space increases to 3" alternatively the insulation could be placed inside of wall.
10. 2" OCA-pressure-treated sill, anchor with 1/2" x 3'-0" anchor bolts @ 4'-0" o.c.
11. Mechanical damage facing for foundation insulation when insulation is placed on the outside of wall.
12. Bottom plate size size as studs, top plate 4" wider, joints staggered 8'-0" o.c.
13. 2 x 6 OCA-pressure-treated base sheathing, 2-3 1/2" galy, galy nail to each stud and sill
14. 2 x 3 horizontal sheathing @ 2'-0" o.c.
15. 1/2" select sheathing fir plywood, face grain vertical; galy, fasteners; plywood joints spaced 1/8"
16. R-11 insulation or better in walls and R-28 insulation in ceiling. Vapor barrier to be placed toward the outside
17. Adequately anchor roof truss to top plate.
18. Galy, steel exterior siding, screw beside ribs to 1.
19. 3" concrete floor with 5#6, 6ga. voided wire mesh (optional) 1" rigid insulation on compacted sand fill
20. 1/4" steel anchor strap, drill for 3/8" bolts, tie to horizontal rebar. Alternative commercial strap connectors are available.
21. On all sills use 1/2" x 1'-0" anchor bolts, see 1 for spacing
22. 2" stud drilled for bolts

COOPERATIVE EXTENSION SERVICE AGRICULTURE AND HOME ECONOMICS

UNITED STATES DEPARTMENT OF AGRICULTURE COOPERATING REFRIGERATED FRUIT PILEY VEGETABLE STORAGE WALL

CAN '87 6389 SHEET 1 OF 1 DRAWING NOT TO SCALE