

GRAIN DEPTH AT WALL = 7'11" FOR SHELLED CORN WHEN PILED AT ITS ANGLE OF REPOSE, 15°, TO A 14' CENTER HEIGHT IN A 60° WIDE BUILDING. STORES 640/bu/ft OF BUILDING LENGTH.

NOTES

- 1 USE TRUSS RAFTERS SIZED FOR 48" SPACING TO SUIT LOCAL ROOF SNOW AND DEAD LOAD AND SPAN OF BUILDING. IF LOADS REQUIRE SPACING LESS THAN 48", ADJUST STUD SPACING SO THAT KNEE BRACING ALIGNS WITH TRUSS RAFTER AND STUDS. GRAIN PRESSURE AGAINST WALLS REQUIRES EXTRA TIE STRENGTH AT TOP OF PLATE, SEE (9) OR SHEET #2 AND (12) OR SHEET 3.
- 2 LENGTH VARIABLE IN MULTIPLES OF 8'-0".
- 3 STUD WALL HEIGHT MAY BE 10', 12', OR 14', SLIDING DOORS.
- 4 MAIN DOOR, 2'-8" x 6'-8"
- 5 CONTRACTION JOINT IN CONCRETE FOUNDATION NOT OVER 50' O.C.
- 6 TRUSS RAFTER CROSS-BRACING, SEE SHEET #2, NOTE (20).
- 7 L-ANCHORS, SEE SHEET #3, NOTE (*), (**).
- 8 SIDING AND ROOFING CAN BE OWNER'S CHOICE, DETAILS SHOWN FOR METAL ROOFING AND METAL SIDING.
- 9 CONCRETE APRON 5" THICK MINIMUM, WIDTH AND LENGTH TO SUFFICIENTLY ACCOMMODATE TRUCK OR OTHER LARGE EQUIPMENT.
- 10 RIDGE VENTILATION, CAPACITY TO SUIT THE INTENDED USE.
- 11 LIGHTNING PROTECTION SYSTEM.

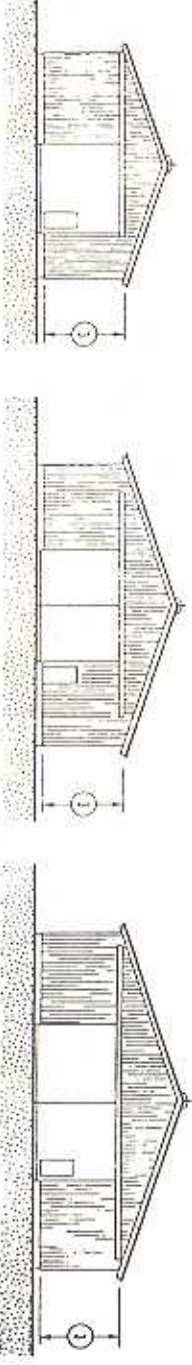
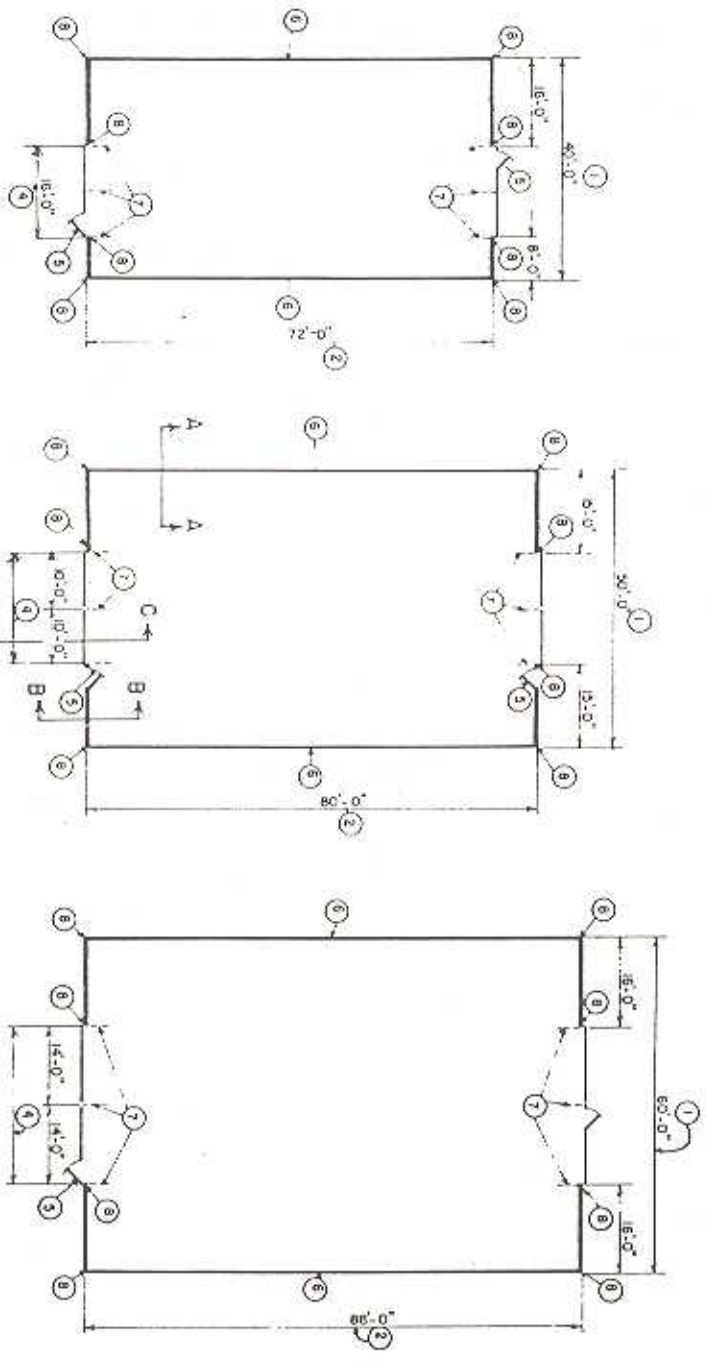
SPECIFICATIONS

UNLESS OTHERWISE SPECIFIED, ALL CAST-IN-PLACE CONCRETE IS TO BE MINIMUM OF 4000 PSI AT 28 DAYS, 68 AIR-ENTRAINED.

ALL REINFORCING STEEL TO BE MINIMUM OF 60,000 PSI DEFORMED BARS; PROVIDE 2" CONCRETE COVER OVER REINFORCING STEEL.

ALL EXPOSED STEEL TO BE GALVANIZED OR PAINTED TO RESIST CORROSION FROM MOISTURE.

ALL FRAMING LUMBER, INCLUDING STUDS, IS NO. 2 (OR BETTER), S-P-F SPECIES GROUP, UNLESS OTHERWISE SPECIFIED.



UNITED STATES DEPARTMENT OF AGRICULTURE COOPERATIVE		
MACHINERY OR GRAIN STORAGE		
KNEE BRACED CONSTRUCTION		
AGRICULTURE AND HOME ECONOMICS		
NO. 87		
6394		
SHEET 1 OF 3		