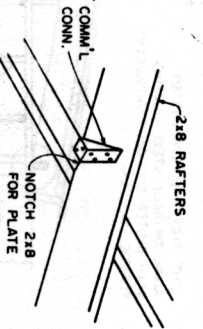


② DETAIL

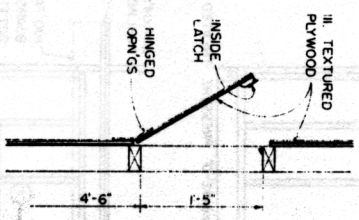
NOTES:
 3/4" EXT. TYPE PLYWOOD OPTIONAL FOR INTERIOR SIDING

12'-0" SHEETS OF CORRUGATED ALUM. (0.019) OR GALV. STEEL ROOFING (26 GA.)

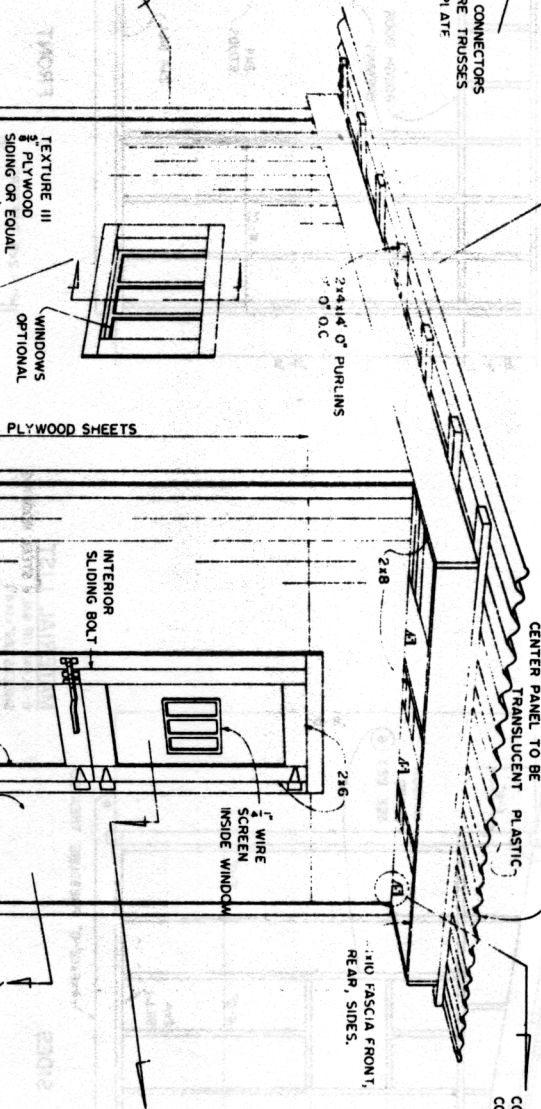
CENTER PANEL TO BE TRANSLUCENT PLASTIC



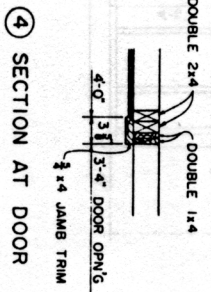
③ DETAIL



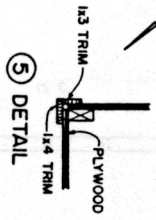
① DETAIL OF TWO OPN'GS AT REAR



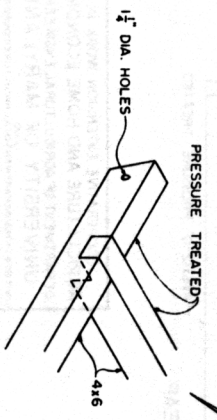
PERSPECTIVE



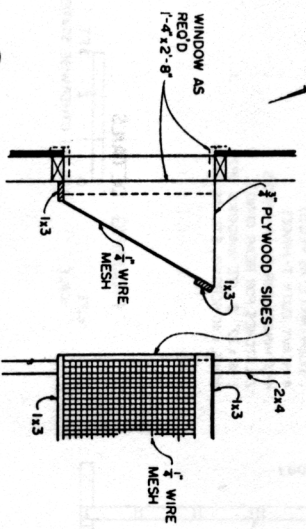
④ SECTION AT DOOR



⑤ DETAIL



⑦ DETAIL



⑥ WINDOW GUARD SECTION PARTIAL ELEV.

SCALE: UNLESS OTHERWISE STATED



COOPERATIVE EXTENSION WORK IN AGRICULTURE AND HOME ECONOMICS DEPARTMENT OF AGRICULTURAL ENGINEERING UNIVERSITY OF MARYLAND UNITED STATES DEPARTMENT OF AGRICULTURE COOPERATING

PORTABLE STABLE FOR A HORSE N.J. '69 6082 SHEET 1 OF 2

NOTE: BASED ON N.J. PLAN No. 150