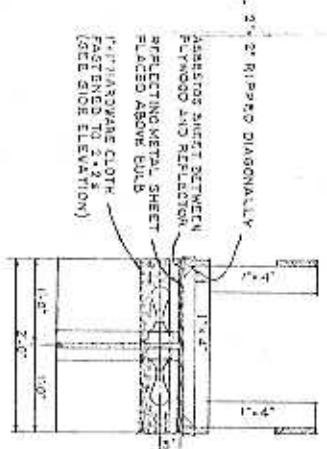
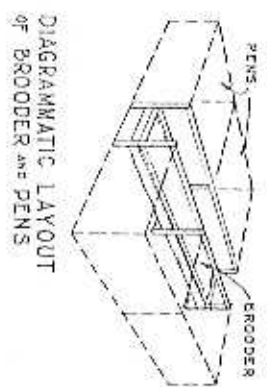


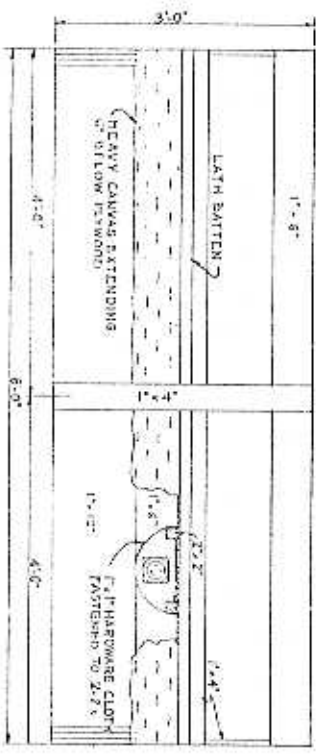
PLAN



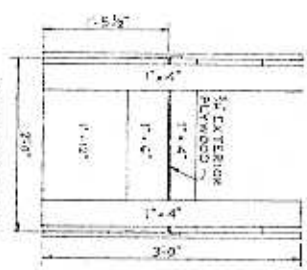
SECTION A-A



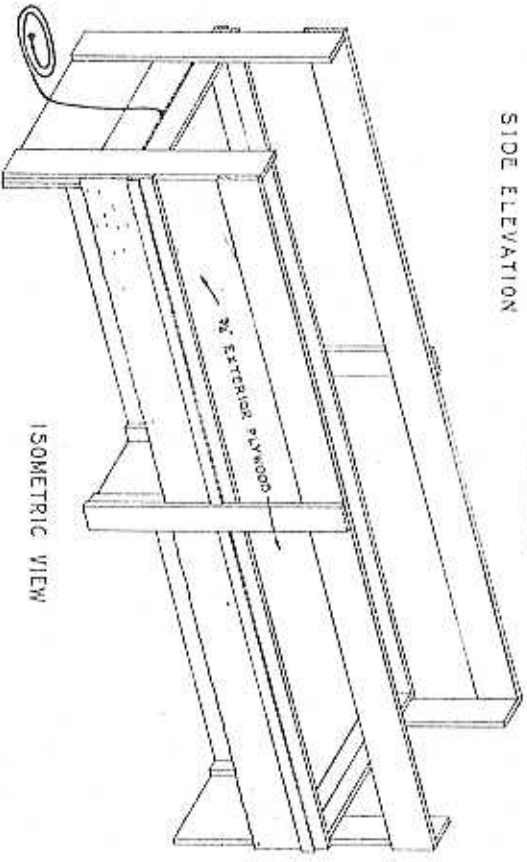
DIAGRAMMATIC LAYOUT OF BROODER AND PENS



SIDE ELEVATION



END ELEVATION



ISOMETRIC VIEW

BILL OF MATERIALS

LUMBER	1'-8" x 1'-0" x 1/2"	1	PC	NON-METALLIC JUNCTION BOXES	4EA
	1'-4" x 1'-0" x 1/2"	4	PC	ROCKET LIGHT REFLECTOR (PULL DOWN OPTIONAL)	4EA
	1'-2" x 1'-0" x 1/2"	3	PC	LIGHT BULBS (SIZE VARIES WITH HEATING REQUIREMENTS)	4EA
	1'-2" x 1'-4" x 1/2"	1	PC	NON-METALLIC SHEATHED CABLE NO. 14-2	10 FT
	2" x 2" x 6'-0"	1	PC	HEAVY CANVAS EXTENDING CORD NO. 14-2	10 FT
	2" x 2" x 10'-0"	1	PC	MALE PLUG	10 FT
MISCELLANEOUS:					
	2'-0" x 8'-0" x 3/4"	1	PC	EXTERIOR PLYWOOD	4EA
	1'-0" x 8'-0"	1	PC	1/2" LATH BATTEN CLOTH	4EA
	1'-0" x 1'-0"	1	PC	ROCKET LIGHT REFLECTOR	4EA
	1'-0" x 1'-0"	1	PC	HEAVY CANVAS	10 FT
	1'-0" x 1'-0"	1	PC	MALE PLUG	10 FT
ELECTRICAL					
				NON-METALLIC JUNCTION BOXES	4EA
				ROCKET LIGHT REFLECTOR (PULL DOWN OPTIONAL)	4EA
				LIGHT BULBS (SIZE VARIES WITH HEATING REQUIREMENTS)	4EA
				NON-METALLIC SHEATHED CABLE NO. 14-2	10 FT
				HEAVY CANVAS EXTENDING CORD NO. 14-2	10 FT
				MALE PLUG	10 FT

NOTE:

1. ATTACH FOUR 1'-4" LAMING PINS TO EACH OF THESE UNITS.

2. WHEN THE UNITS ARE PLACED TOGETHER, EACH BROODER MUST BE PLUGGED IN SEPARATELY TO AN ELECTRICAL SERVICE OUTLET WHICH IS PROPERLY WIRED TO CARRY THE LOAD.

SCALE: 1/4" = 1'-0" UNLESS OTHERWISE NOTED.