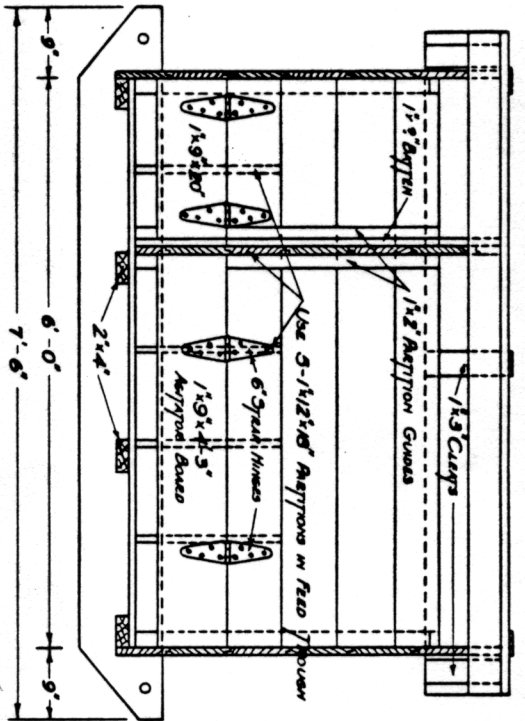
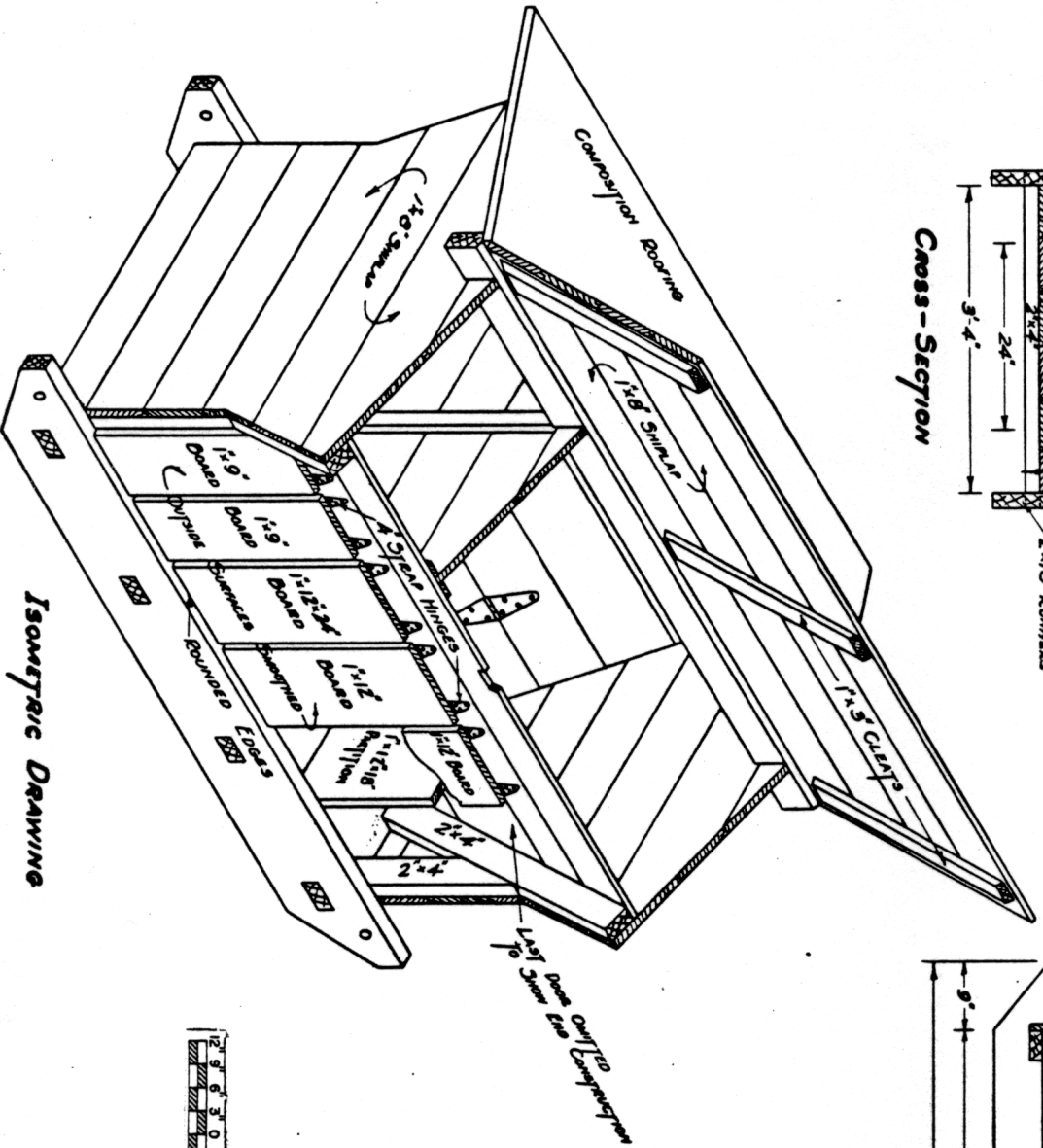


Cross-Section

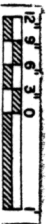


Longitudinal Section



Isometric Drawing

No.	SIZE	KIND	DESCRIPTION
2	2"x6"x8'	Oak	Sills
2	2"x4"x10'	Y.P.	End Rappings
2	2"x4"x8'	"	Joists
1	2"x4"x17'	"	Ridge
2	1 1/2"x12"x6	"	Inner Doors and Feed Tray Rappings
1	1 1/2"x10"x14	"	Removable Doors and Hinged Doors
4	1"x6"x12'	"	Aerianor Boazs
4	1"x6"x12'	"	Roof
4	1"x6"x12'	"	Sills
4	1"x6"x12'	"	Bottom
2	1"x8"x9'	"	Ends and Feed Rappings
2	1"x8"x9'	"	"
2	1"x3"x9'	Y.P.	Roor Cleats
1	1"x2"x8'	"	Antens, Rapping Guses, and Cleats
1	1"x2"x8'	"	"
1/2	6" 3/4" Zinc Hinges and Screws	"	"
1/2	40 sq. ft. Flooring	"	"
1	3 lbs. 6" Nails	"	"
1	1 lb. 20" Nails	"	"



COOPERATIVE EXTENSION WORK IN
AGRICULTURE AND HOME ECONOMICS

U. S. DEPT. OF AGRICULTURE COOPERATING
AND
AND

HOG SELF-FEEDER

KY. 33 EX. 5008 SHEET 1 OF 1