

PERSPECTIVE

EXIT GATE ON HEADGATE AS DESIRED.

USE OF BREEDING CRATE

SUPPORT BOAR ON TWO 2"x6" FOOTBOARDS WITH FRONT ENDS RESTING ON CLEATED GATE AND REAR ENDS ON CLEATED FLOOR. ADJUST HEIGHT TO SUIT MEN INSERT A 2"x4" SPRING SLATS AND UNDER 2"x6" FOOTBOARDS.

CAUTION SHOULD BE USED TO PREVENT CRACKING ANIMALS JAW WITH HEADGATE

BILL OF MATERIALS FOR CRATE AND EXIT GATE ONLY

LUMBER	QUANTITY	SIZE	USE
1	1	2" x 4" x 8'	BASE
2	2	2" x 4" x 10'	BASE
3	2	2" x 4" x 10'	POST
4	2	2" x 4" x 10'	POST
5	2	2" x 4" x 10'	POST
6	2	2" x 4" x 10'	POST
7	1	2" x 4" x 10'	POST
8	1	2" x 4" x 10'	POST
9	1	2" x 4" x 10'	POST
10	1	2" x 4" x 10'	POST
11	1	2" x 4" x 10'	POST
12	1	2" x 4" x 10'	POST
13	1	2" x 4" x 10'	POST
14	1	2" x 4" x 10'	POST
15	1	2" x 4" x 10'	POST
16	1	2" x 4" x 10'	POST
17	1	2" x 4" x 10'	POST
18	1	2" x 4" x 10'	POST
19	1	2" x 4" x 10'	POST
20	1	2" x 4" x 10'	POST
21	1	2" x 4" x 10'	POST
22	1	2" x 4" x 10'	POST
23	1	2" x 4" x 10'	POST
24	1	2" x 4" x 10'	POST
25	1	2" x 4" x 10'	POST
26	1	2" x 4" x 10'	POST
27	1	2" x 4" x 10'	POST
28	1	2" x 4" x 10'	POST
29	1	2" x 4" x 10'	POST
30	1	2" x 4" x 10'	POST
31	1	2" x 4" x 10'	POST
32	1	2" x 4" x 10'	POST
33	1	2" x 4" x 10'	POST
34	1	2" x 4" x 10'	POST
35	1	2" x 4" x 10'	POST
36	1	2" x 4" x 10'	POST
37	1	2" x 4" x 10'	POST
38	1	2" x 4" x 10'	POST
39	1	2" x 4" x 10'	POST
40	1	2" x 4" x 10'	POST
41	1	2" x 4" x 10'	POST
42	1	2" x 4" x 10'	POST
43	1	2" x 4" x 10'	POST
44	1	2" x 4" x 10'	POST
45	1	2" x 4" x 10'	POST
46	1	2" x 4" x 10'	POST
47	1	2" x 4" x 10'	POST
48	1	2" x 4" x 10'	POST
49	1	2" x 4" x 10'	POST
50	1	2" x 4" x 10'	POST
51	1	2" x 4" x 10'	POST
52	1	2" x 4" x 10'	POST
53	1	2" x 4" x 10'	POST
54	1	2" x 4" x 10'	POST
55	1	2" x 4" x 10'	POST
56	1	2" x 4" x 10'	POST
57	1	2" x 4" x 10'	POST
58	1	2" x 4" x 10'	POST
59	1	2" x 4" x 10'	POST
60	1	2" x 4" x 10'	POST
61	1	2" x 4" x 10'	POST
62	1	2" x 4" x 10'	POST
63	1	2" x 4" x 10'	POST
64	1	2" x 4" x 10'	POST
65	1	2" x 4" x 10'	POST
66	1	2" x 4" x 10'	POST
67	1	2" x 4" x 10'	POST
68	1	2" x 4" x 10'	POST
69	1	2" x 4" x 10'	POST
70	1	2" x 4" x 10'	POST
71	1	2" x 4" x 10'	POST
72	1	2" x 4" x 10'	POST
73	1	2" x 4" x 10'	POST
74	1	2" x 4" x 10'	POST
75	1	2" x 4" x 10'	POST
76	1	2" x 4" x 10'	POST
77	1	2" x 4" x 10'	POST
78	1	2" x 4" x 10'	POST
79	1	2" x 4" x 10'	POST
80	1	2" x 4" x 10'	POST
81	1	2" x 4" x 10'	POST
82	1	2" x 4" x 10'	POST
83	1	2" x 4" x 10'	POST
84	1	2" x 4" x 10'	POST
85	1	2" x 4" x 10'	POST
86	1	2" x 4" x 10'	POST
87	1	2" x 4" x 10'	POST
88	1	2" x 4" x 10'	POST
89	1	2" x 4" x 10'	POST
90	1	2" x 4" x 10'	POST

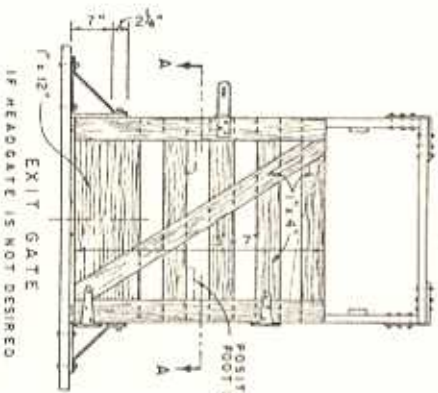
MISCELLANEOUS:

- 1 2" x 3/2" BOLTS, WOLFE ETC
- 2 1/2" x 1/2" BOLTS, WOLFE ETC
- 3 1/2" x 1/2" BOLTS, WOLFE ETC
- 4 1/2" x 1/2" BOLTS, WOLFE ETC
- 5 1/2" x 1/2" BOLTS, WOLFE ETC
- 6 1/2" x 1/2" BOLTS, WOLFE ETC
- 7 1/2" x 1/2" BOLTS, WOLFE ETC
- 8 1/2" x 1/2" BOLTS, WOLFE ETC
- 9 1/2" x 1/2" BOLTS, WOLFE ETC
- 10 1/2" x 1/2" BOLTS, WOLFE ETC
- 11 1/2" x 1/2" BOLTS, WOLFE ETC
- 12 1/2" x 1/2" BOLTS, WOLFE ETC
- 13 1/2" x 1/2" BOLTS, WOLFE ETC
- 14 1/2" x 1/2" BOLTS, WOLFE ETC
- 15 1/2" x 1/2" BOLTS, WOLFE ETC
- 16 1/2" x 1/2" BOLTS, WOLFE ETC
- 17 1/2" x 1/2" BOLTS, WOLFE ETC
- 18 1/2" x 1/2" BOLTS, WOLFE ETC
- 19 1/2" x 1/2" BOLTS, WOLFE ETC
- 20 1/2" x 1/2" BOLTS, WOLFE ETC
- 21 1/2" x 1/2" BOLTS, WOLFE ETC
- 22 1/2" x 1/2" BOLTS, WOLFE ETC
- 23 1/2" x 1/2" BOLTS, WOLFE ETC
- 24 1/2" x 1/2" BOLTS, WOLFE ETC
- 25 1/2" x 1/2" BOLTS, WOLFE ETC
- 26 1/2" x 1/2" BOLTS, WOLFE ETC
- 27 1/2" x 1/2" BOLTS, WOLFE ETC
- 28 1/2" x 1/2" BOLTS, WOLFE ETC
- 29 1/2" x 1/2" BOLTS, WOLFE ETC
- 30 1/2" x 1/2" BOLTS, WOLFE ETC
- 31 1/2" x 1/2" BOLTS, WOLFE ETC
- 32 1/2" x 1/2" BOLTS, WOLFE ETC
- 33 1/2" x 1/2" BOLTS, WOLFE ETC
- 34 1/2" x 1/2" BOLTS, WOLFE ETC
- 35 1/2" x 1/2" BOLTS, WOLFE ETC
- 36 1/2" x 1/2" BOLTS, WOLFE ETC
- 37 1/2" x 1/2" BOLTS, WOLFE ETC
- 38 1/2" x 1/2" BOLTS, WOLFE ETC
- 39 1/2" x 1/2" BOLTS, WOLFE ETC
- 40 1/2" x 1/2" BOLTS, WOLFE ETC
- 41 1/2" x 1/2" BOLTS, WOLFE ETC
- 42 1/2" x 1/2" BOLTS, WOLFE ETC
- 43 1/2" x 1/2" BOLTS, WOLFE ETC
- 44 1/2" x 1/2" BOLTS, WOLFE ETC
- 45 1/2" x 1/2" BOLTS, WOLFE ETC
- 46 1/2" x 1/2" BOLTS, WOLFE ETC
- 47 1/2" x 1/2" BOLTS, WOLFE ETC
- 48 1/2" x 1/2" BOLTS, WOLFE ETC
- 49 1/2" x 1/2" BOLTS, WOLFE ETC
- 50 1/2" x 1/2" BOLTS, WOLFE ETC
- 51 1/2" x 1/2" BOLTS, WOLFE ETC
- 52 1/2" x 1/2" BOLTS, WOLFE ETC
- 53 1/2" x 1/2" BOLTS, WOLFE ETC
- 54 1/2" x 1/2" BOLTS, WOLFE ETC
- 55 1/2" x 1/2" BOLTS, WOLFE ETC
- 56 1/2" x 1/2" BOLTS, WOLFE ETC
- 57 1/2" x 1/2" BOLTS, WOLFE ETC
- 58 1/2" x 1/2" BOLTS, WOLFE ETC
- 59 1/2" x 1/2" BOLTS, WOLFE ETC
- 60 1/2" x 1/2" BOLTS, WOLFE ETC
- 61 1/2" x 1/2" BOLTS, WOLFE ETC
- 62 1/2" x 1/2" BOLTS, WOLFE ETC
- 63 1/2" x 1/2" BOLTS, WOLFE ETC
- 64 1/2" x 1/2" BOLTS, WOLFE ETC
- 65 1/2" x 1/2" BOLTS, WOLFE ETC
- 66 1/2" x 1/2" BOLTS, WOLFE ETC
- 67 1/2" x 1/2" BOLTS, WOLFE ETC
- 68 1/2" x 1/2" BOLTS, WOLFE ETC
- 69 1/2" x 1/2" BOLTS, WOLFE ETC
- 70 1/2" x 1/2" BOLTS, WOLFE ETC
- 71 1/2" x 1/2" BOLTS, WOLFE ETC
- 72 1/2" x 1/2" BOLTS, WOLFE ETC
- 73 1/2" x 1/2" BOLTS, WOLFE ETC
- 74 1/2" x 1/2" BOLTS, WOLFE ETC
- 75 1/2" x 1/2" BOLTS, WOLFE ETC
- 76 1/2" x 1/2" BOLTS, WOLFE ETC
- 77 1/2" x 1/2" BOLTS, WOLFE ETC
- 78 1/2" x 1/2" BOLTS, WOLFE ETC
- 79 1/2" x 1/2" BOLTS, WOLFE ETC
- 80 1/2" x 1/2" BOLTS, WOLFE ETC
- 81 1/2" x 1/2" BOLTS, WOLFE ETC
- 82 1/2" x 1/2" BOLTS, WOLFE ETC
- 83 1/2" x 1/2" BOLTS, WOLFE ETC
- 84 1/2" x 1/2" BOLTS, WOLFE ETC
- 85 1/2" x 1/2" BOLTS, WOLFE ETC
- 86 1/2" x 1/2" BOLTS, WOLFE ETC
- 87 1/2" x 1/2" BOLTS, WOLFE ETC
- 88 1/2" x 1/2" BOLTS, WOLFE ETC
- 89 1/2" x 1/2" BOLTS, WOLFE ETC
- 90 1/2" x 1/2" BOLTS, WOLFE ETC

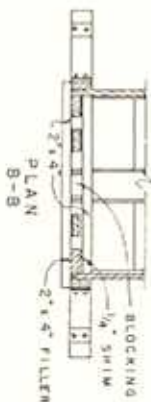
NOTE:

- 1 USE CARRIAGE BOLTS WHEREVER PRACTICABLE. ROUND HEADS SIDE TOWARDS ANIMAL TO PREVENT INJURY
- 2 ALL LUMBER IN CONTACT WITH EARTH SHOULD BE PRESURE TREATED WITH CREOSOTE OR SIMILAR PRESERVATIVE. ALL OTHER LUMBER TO BE PAINTED WITH WOOD PRESERVATIVE
- 3 ALL METAL TO BE GALVANIZED OR PAINTED WITH A METAL PRESERVATIVE

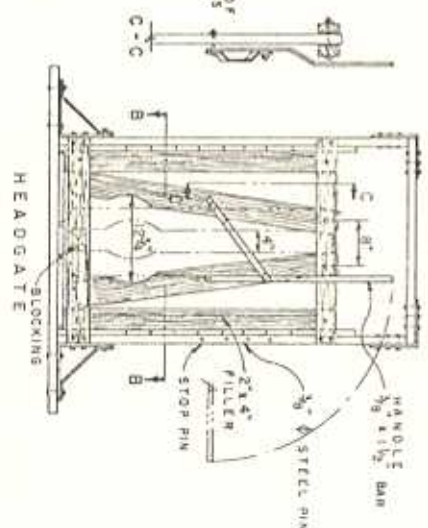
POSITION OF 2"x4" TO SUPPORT FOOTBOARDS FOR BOX WHEN HEADGATE (SAME FOR EITHER HEADGATE)



EXIT GATE  
IF HEADGATE IS NOT DESIRED



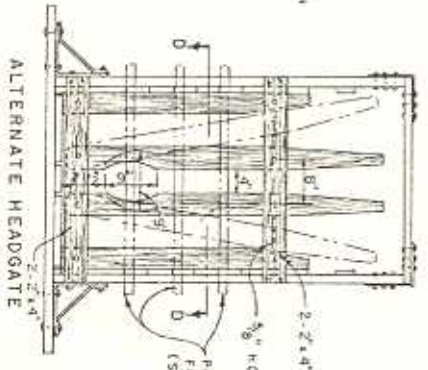
PLAN B-B



HEADGATE



PLAN D-D



ALTERNATE HEADGATE

GATE DETAILS  
SCALE 0 2 FT