

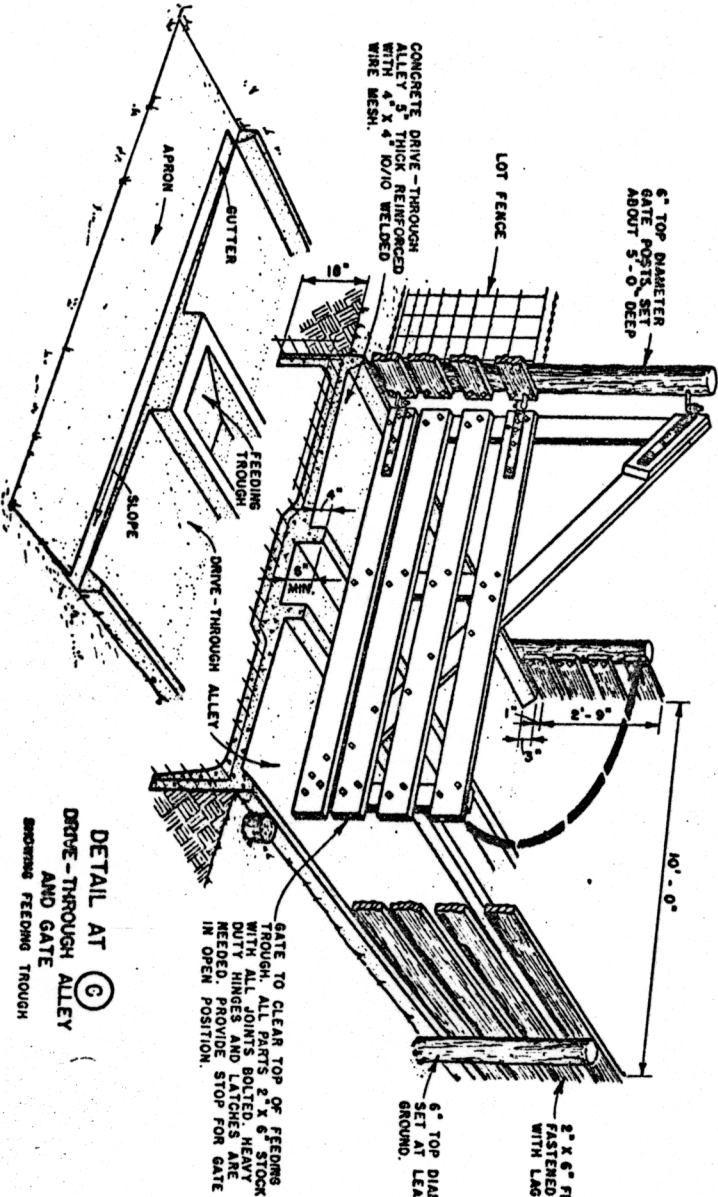
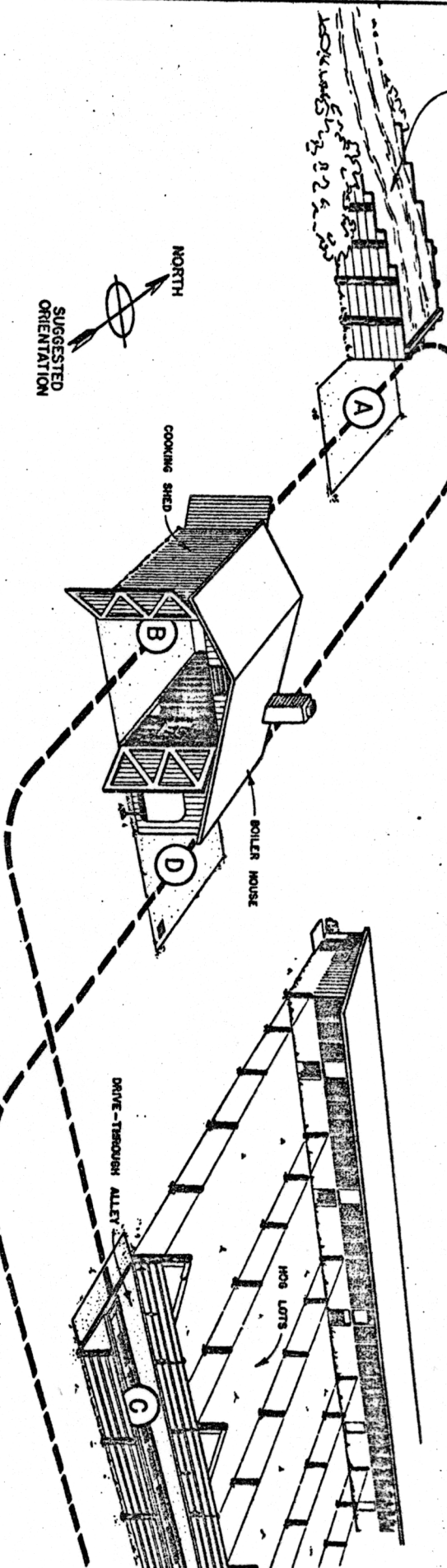
(A) THE COLLECTION TRUCK IS BACKED UP THE RAMP AND UNLOADED INTO THE COOKING PLATFORM. IT IS THEN WASHED AND MADE READY FOR ANOTHER COLLECTION.

(B) THE COOKING TRUCK, FITTED WITH PIPES FOR THE SHED, IS MOVED TO THE COOKING PLATFORM. THE STEAM IS TURNED INTO THE LOAD UNITS. THE LOADS ARE COOKED IN ACCORDANCE WITH REGULATIONS.

(C) AFTER THE LOAD HAS COOLED ENOUGH FOR SAFE HANDLING, THE TRUCK IS UNLOADED ON THE DRIVE-THROUGH ALLEY. THE LOAD IS RELEASED INTO THE FEEDING PENS. CLEAN THE TROUGH AND ALLEY AFTER EACH FEEDING.

(D) THE COOKING TRUCK IS MOVED BACK TO THE BOILER HOUSE WHERE IT IS WASHED AND LEFT UNTIL THE NEXT COLLECTION TRUCK ARRIVES ON THE RAMP.

SUGGESTED ARRANGEMENT OF FACILITIES



DETAIL AT (C)
DRIVE-THROUGH ALLEY AND GATE
SHOWING FEEDING TROUGH

NOTES

1. THIS PLAN IS INTENDED AS A GUIDE IN LAYING OUT A GARBAGE - FEEDING PREMISE.
2. THE COOKING SHED IS CLOSED TO CONSERVE FUEL AND REDUCE COOKING TIME.
3. THE ALLEY IS GIVEN A SLIGHT SLOPE AWAY FROM THE FEEDING TROUGH.
4. ALLEY SHOULD PROVIDE 8 TO 10 SQ FT FOR EACH 250 LB. HOG. IN WARM AREAS, ALLOW 10 TO 12 SQ. FT.
5. FOR FEEDING PROVIDE APPROXIMATELY 19" OF TROUGH SPACE PER HOG.
6. POSTS AND PLANKS USED FOR RAMP, FENCES AND GATES SHOULD BE PRESERVE-TREATED WITH PRESERVATIVE FOR GREATER LIFE.
7. CONCRETE TO BE 1:2:2 1/4 MIX, USING ABOUT 4 GALLONS OF ATEA PER SACK OF CEMENT CURE BY COVERING OR FLOODING FOR AT LEAST 7 DAYS.
8. POUR ALLEY SLAB IN 12 FOOT SECTIONS WITH 1/2" EXPANSION JOINTS 30 FEET APART.

COOPERATIVE EXTENSION WORK IN AGRICULTURE AND HOME ECONOMICS

UNITED STATES DEPARTMENT OF AGRICULTURE COOPERATING

GARBAGE COOKING & FEEDING LAYOUT FOR HOGS
USDA '56 EX. 5820 SHEET 1 OF 1