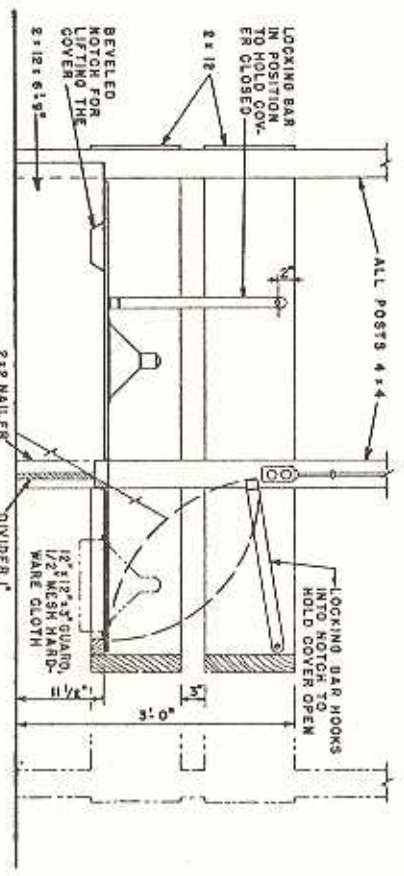
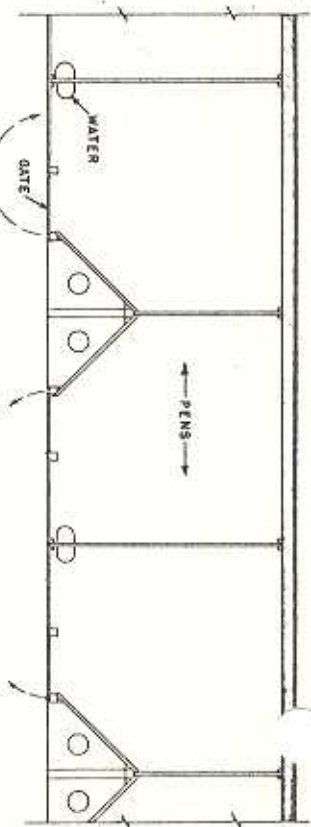
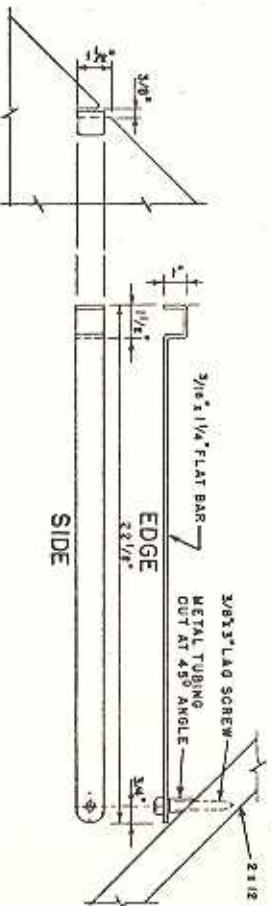


REFLECTOR MOUNTED OVER HOLE ABOUT 1" SMALLER IN DIAMETER. FASTEN WITH CUPS & TURNOUT FOR EASE OF CHANGING LAMPS. RIM OF REFLECTOR MUST BE AT LEAST 10" FROM INSIDE CORNER OF HOVER



ELEVATION
CUT AWAY AT A-A TO SHOW CONSTRUCTION



LOCKING BAR DETAILS
SHOWING NOTCH IN COVER PANEL FOR LOCKING BAR
HOLDS COVER OPEN OR CLOSED

GENERAL HOG HOUSE WIRING RECOMMENDATIONS

1. USE NO. 12 AWG. TYPE UF NON-METALLIC SHEATHED CABLE WITH GROUND WIRE.
2. DO NOT USE MORE THAN 16 LAMPS (8 DOUBLE UNIT BROODERS) PER 20 AMP. PERE CIRCUIT.
3. USE ONLY GROUNDING TYPE DUPLEX CONVENIENCE OUTLETS.
4. ALL COVERED TERMINALS OR POTENTIALS CONNECTED TO OUTLET WITH NO. 16, TYPE #91 RUBBER COVERED COORD. PERMANENT AND MOVABLE BUILDINGS MUST HAVE PROPERLY FUSED SERVICE ENTRANCE BOXES.
6. THESE RECOMMENDATIONS ARE SUBORDINATE TO LOCAL REGULATIONS.

RECOMMENDED INCANDESCENT LAMP SIZES

- MILD WEATHER..... 50 WATT
- GOLD WEATHER..... 100 WATT
- VERY COLD WEATHER..... 150 WATT (MAX.)

CAUTION: DO NOT USE INFRARED LAMPS!

COOPERATIVE EXTENSION WORK IN
 AGRICULTURE AND HOME ECONOMICS
 DEPARTMENT OF AGRICULTURAL ENGINEERING
 UNIVERSITY OF MARYLAND
 AND
 UNITED STATES DEPARTMENT OF AGRICULTURE COOPERATING

ELECTRIC BROODER FOR PIGS
 HOVER TYPE... FOR INCANDESCENT LAMPS

USDA '60 EX. 5907 SHEET 1 OF 1