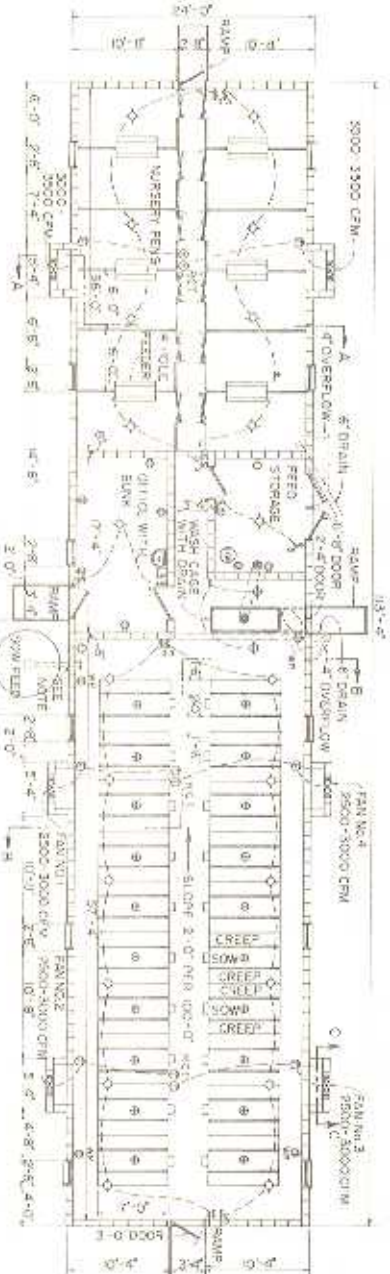
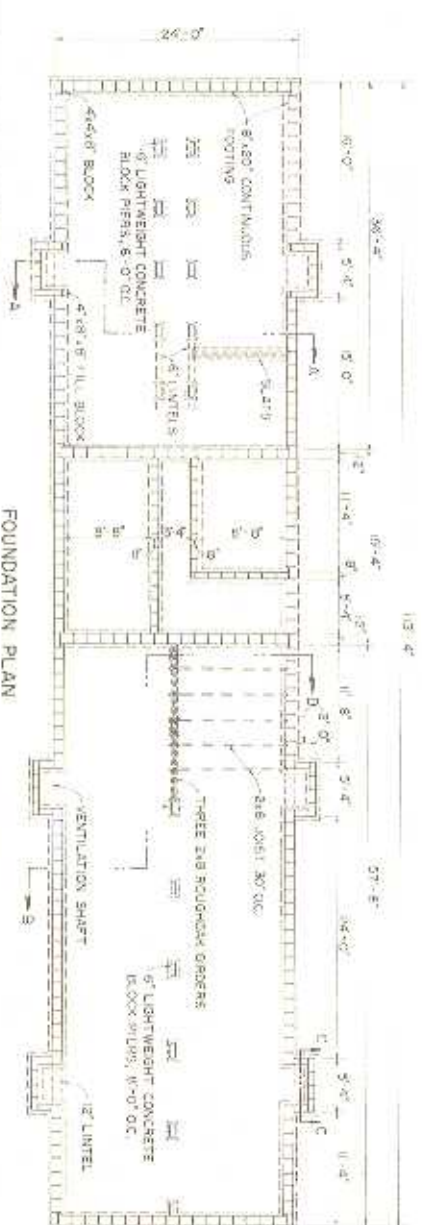


PERSPECTIVE

- SYMBOLOGY
- 1) SCREW LOCK DUPLEX OUTLET, TWO 250 WATT HEAT LAMPS
 - 2) 100 WATT INCANDESCENT LAMP OUTLET
 - 3) 250 WATT FLOOD LAMP
 - 4) 6" X 6" MULTIPURPOSE (SPROUNDED) W/ WATER PROOF)
 - 5) FUSED MOTOR STARTER
 - 6) SINGLE-POLE SWITCH
 - 7) SINGLE-POLE DOUBLE-THROW SWITCH
 - 8) 220 VOLT REFRIGERATOR
 - 9) FLUORESCENT LAMP



FLOOR PLAN



FOUNDATION PLAN

NOTE: 6'-6" HIGH, 6'-0" ABOVE FOUNDATION.
 LOW ALIENS.
 NURSERY HOLDS ONE GROUP OF PIGS.
 FROM FARROWING HOUSE. BLUE TWO.
 FATEN PENS FOR SLOW GAINING PIGS.

BASED ON VPI PLAN 0-125

SCALE: 1/4" = 6'-0" FT.

COOPERATIVE EXTENSION WORK IN
 AGRICULTURE AND HOME ECONOMICS
 DEPARTMENT OF AGRICULTURAL ENGINEERING
 UNIVERSITY OF MARYLAND
 WENTWORTH AVENUE, COLLEGE PARK, MARYLAND

FARROWING AND NURSERY
 BUILDING FOR SWINE

NO. 72

EX. 6135

SHEET 1 OF 2