

FLOOR PLAN

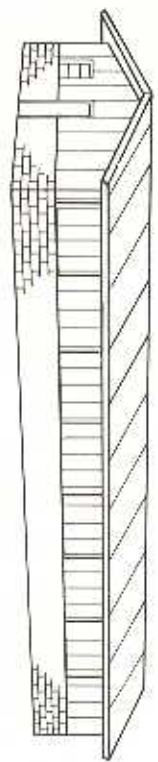
SCALE: 1/4" = 1'-0"

NOTES:
 SLOPE ALL GUTTERS
 TOWARD DRAINS
 FARROWING CRATES 3'-0" X 3'-0"
 V.D. = 4"x8" VENTILATING DOOR EXCEPT
 AS OTHERWISE NOTED.

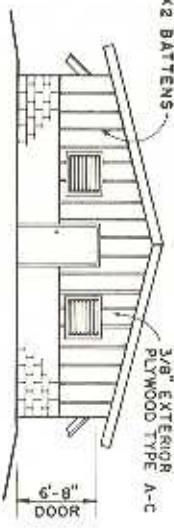
ELECTRICAL LEGEND

- ⊕ DUPLEX CONVENIENCE OUTLET, CEILING MOUNTED OR STUBBED FROM FLOOR 2' HIGH, (FOR HEAT LAMPS.)
 - ⊙ CEILING FIXTURE PORCELAIN KEYLESS, 100W. MINIMUM-200W. MAXIMUM.
 - WALL MOUNTED FIXTURE, 14" MIN. DIA. REFLECTOR.
 - ⚡ SPECIAL PURPOSE OUTLET.
 - ⚡ THREEWAY WALL SWITCH.
 - ⚡ SINGLE POLE WALL SWITCH.
- ALL WIRING SHALL CONFORM TO THE NATIONAL ELECTRIC CODE'S STANDARDS.

SCALE: 1/8" = 1'-0" UNLESS OTHERWISE NOTED.



PERSPECTIVE



REAR ELEVATION



SIDE ELEVATION

NOTE:
 CONSULT LOCAL HEALTH AND BUILDING
 CODE AUTHORITIES BEFORE STARTING
 CONSTRUCTION.

BASED ON: MISS. STATE UNIV. PLAN 6032-A

UNITED STATES DEPARTMENT OF AGRICULTURE COOPERATING			
AND			
COOPERATIVE EXTENSION WORK IN AGRICULTURE AND HOME ECONOMICS			
20 SOW FARROWING HOUSE EXPANDED METAL SLATED FLOOR			
MISS. '75	6201	SHEET 1 OF 3	