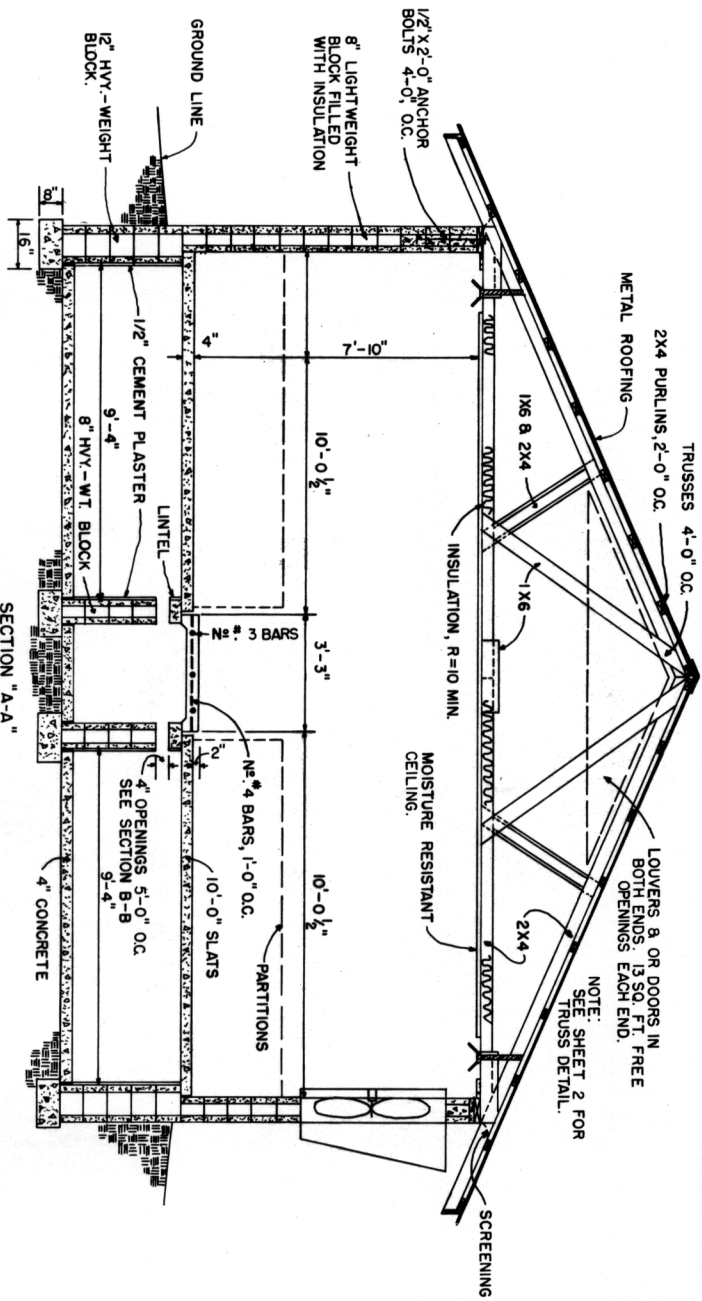
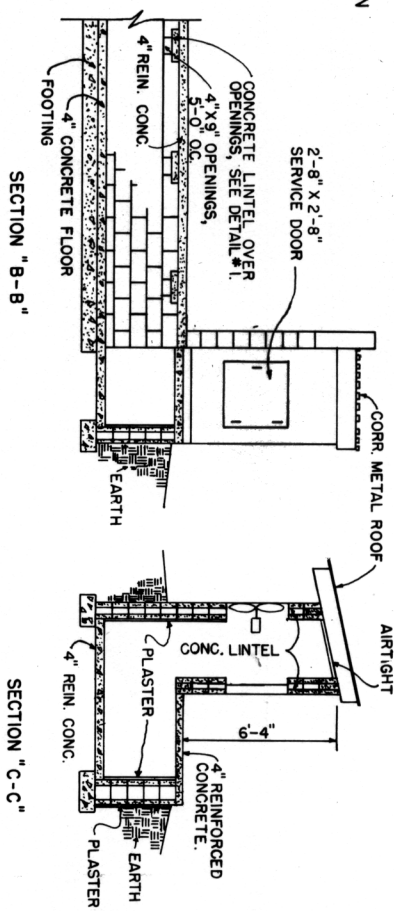


NOTE:
 FAN A - 4000 TO 5000 CFM VARIABLE SPEED.
 FAN B - 4000 TO 5000 CFM.
 FAN C - 8,500 CFM.



NOTE:
 SEE SHEET 2 FOR TRUSS DETAIL.

NOTE: CONSULT WITH LOCAL HEALTH AND BUILDING CODE AUTHORITIES BEFORE STARTING CONSTRUCTION.



SCALE: 1/4" = 1'-0" UNLESS OTHERWISE NOTED
 COOPERATIVE EXTENSION WORK IN AGRICULTURE AND HOME ECONOMICS

UNITED STATES DEPARTMENT OF AGRICULTURE COOPERATING
 AND
 NURSERY BUILDING
 FOR PIGS